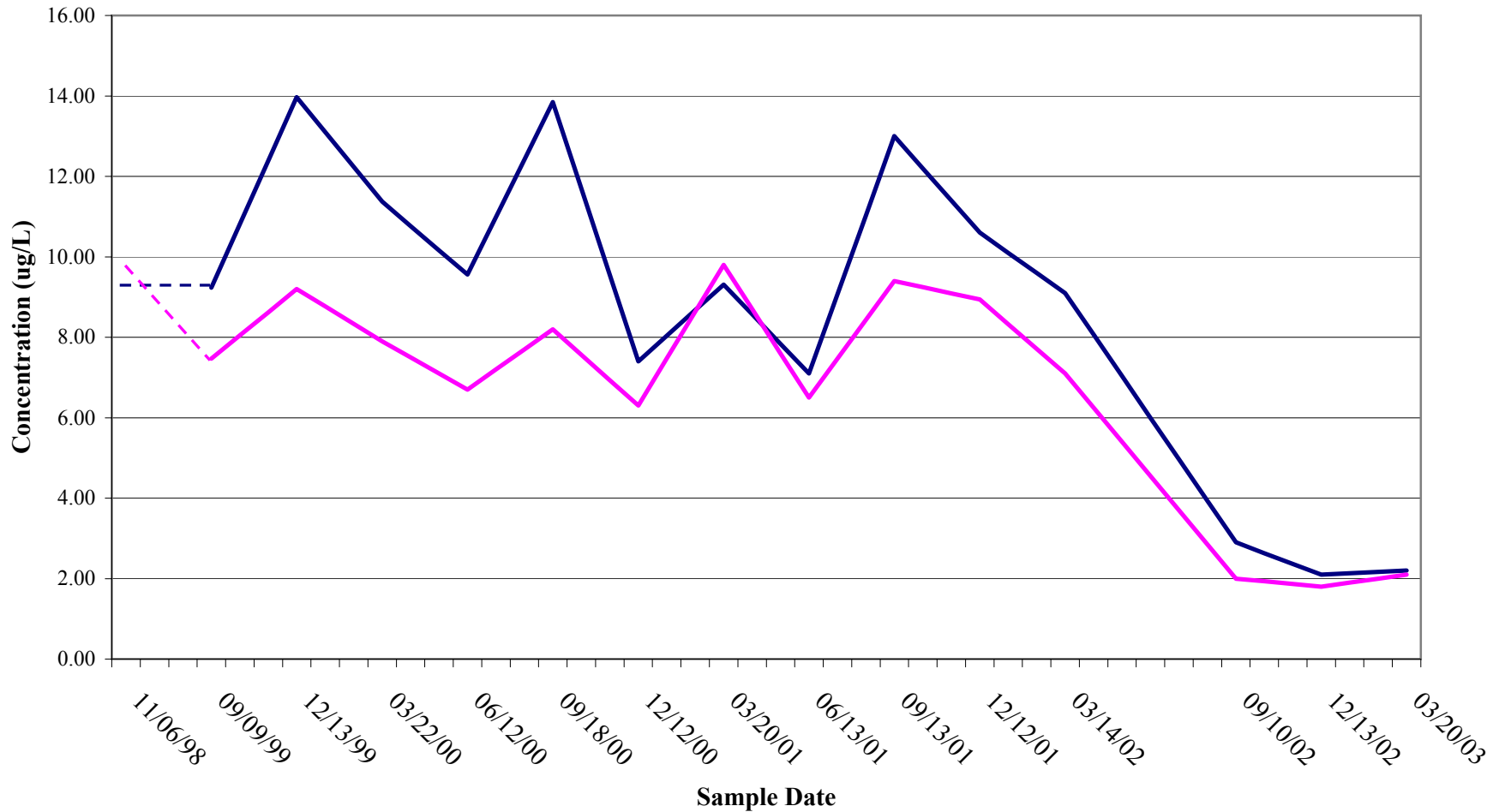


**Figure 4-6, Well CS-MW2-LGR PCE and TCE Concentrations since 1998**



Note: CS-MW2-LGR not sampled in June 2002

— Tetrachloroethene (5 ug/L MCL)      — Trichloroethene (5 ug/L MCL)

Sampling dates separated by more than six months are indicated with dashed lines.

The open borehole well CS-16 was re-completed 7/9/02 as CS-MW16-LGR.