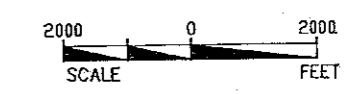


LEGEND:

- FAULT, APPROXIMATE LOCATION
- POSSIBLE FAULT OR FRACTURE (WATERRUS, 1992)
- CONTACT, DASHED WHERE INFERRED
- CONTACT, UNCONFORMABLE
- WELL PLUGGED TO DEPTH OF 451 FEET BELOW GROUND LEVEL
- DEPTH TO BASE OF WELL CASING (NO DATA FOR WELL 11)
- WATER LEVEL IN WELL (DATA COLLECTED 10/92)
- STRATIGRAPHIC BREAK IN SECTION

NOTE: WELLS HAVE BEEN PROJECTED PERPENDICULARLY ONTO THE LINE OF SECTION.
TOP OF WELLS AND WATER LEVELS CORRESPOND TO INDIVIDUAL WELLS RATHER THAN THE LINE OF SECTION GROUND SURFACE.



VERTICAL SCALE IN FEET ABOVE MEAN SEA LEVEL

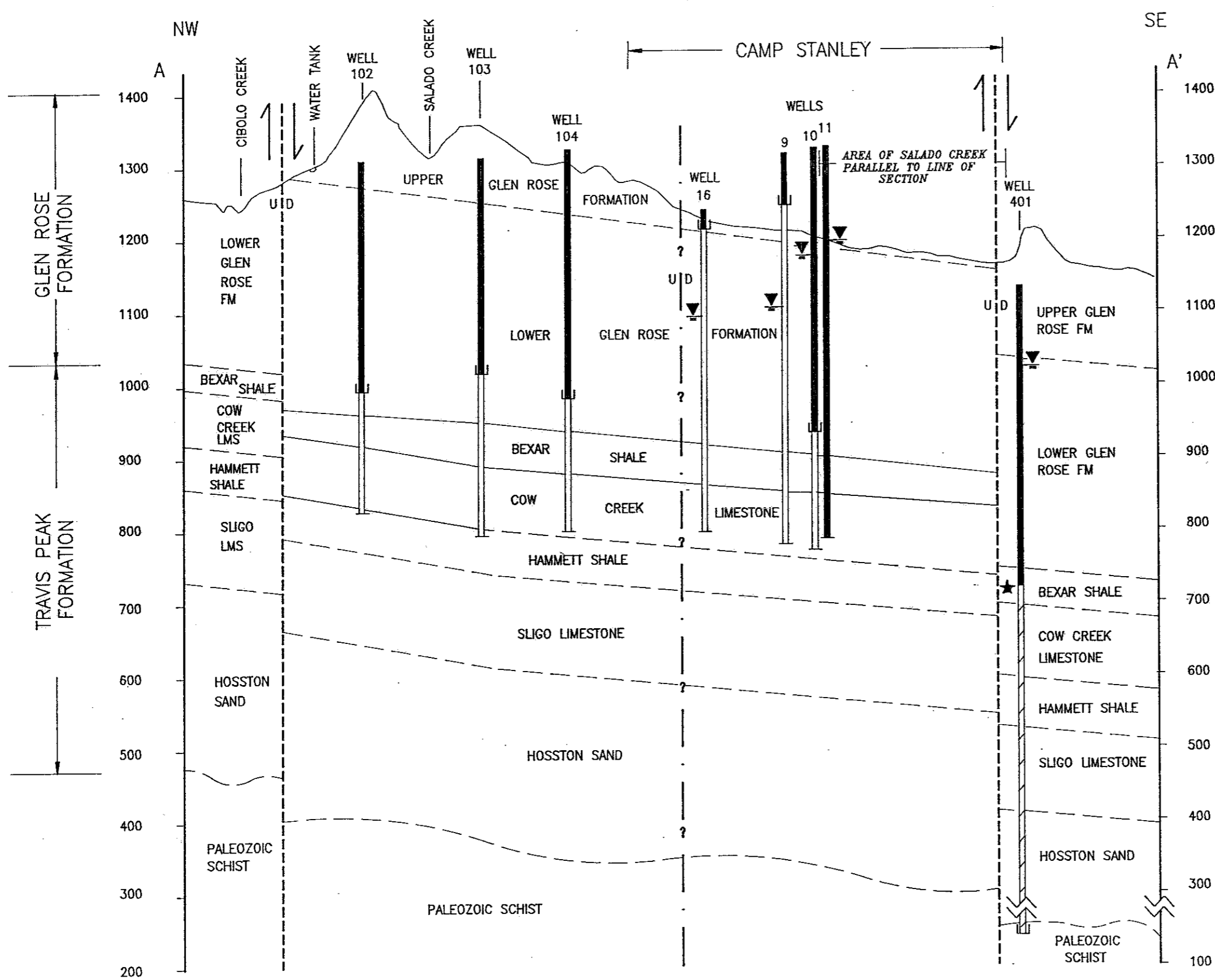


FIGURE 4.2
GEOLOGIC CROSS-SECTION A - A'
MARCH 1993
CSSA GROUNDWATER EVALUATION