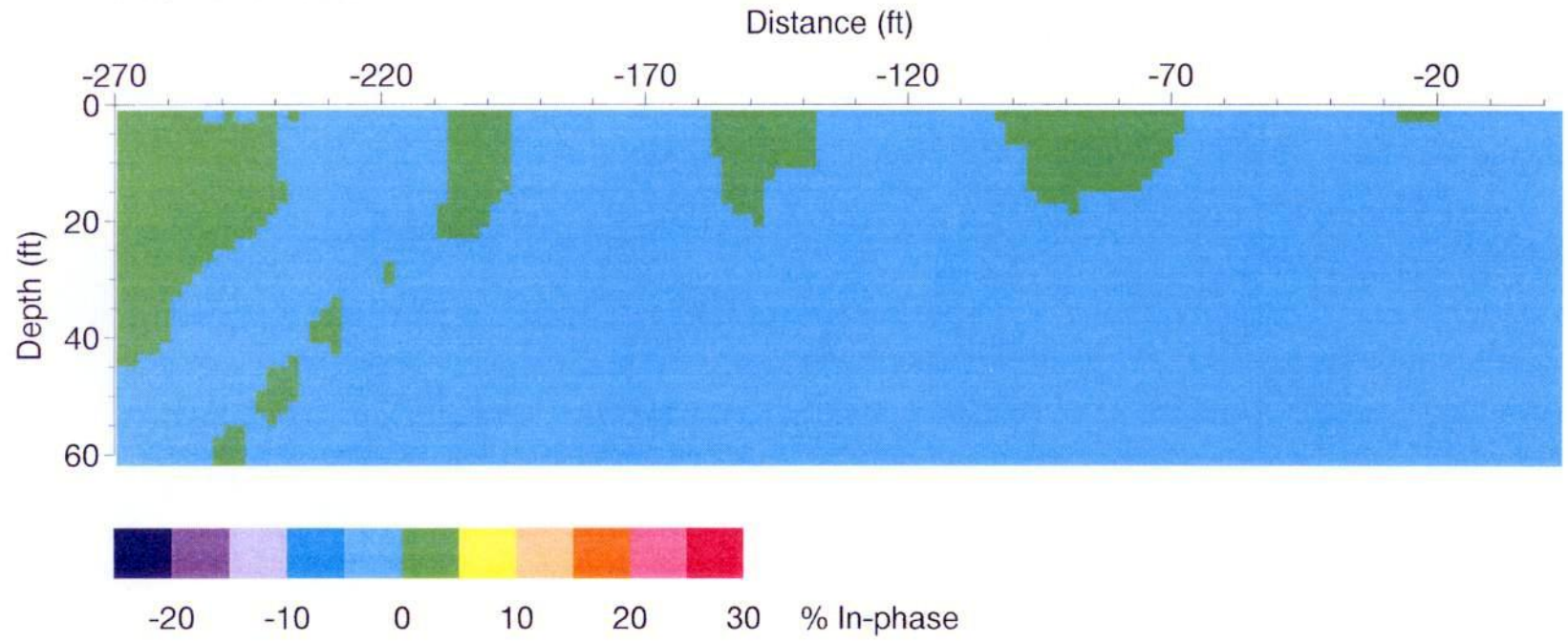


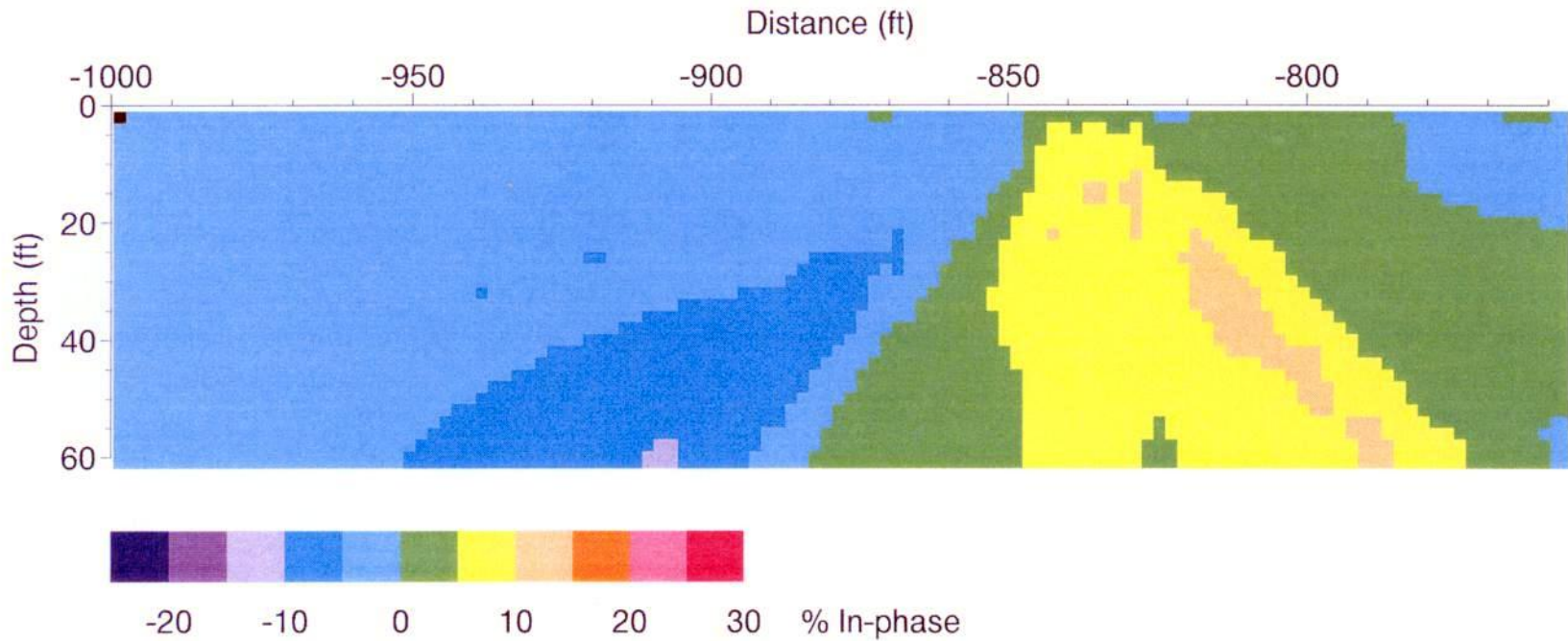
CSSA VLF: Test

Profile: 0103E



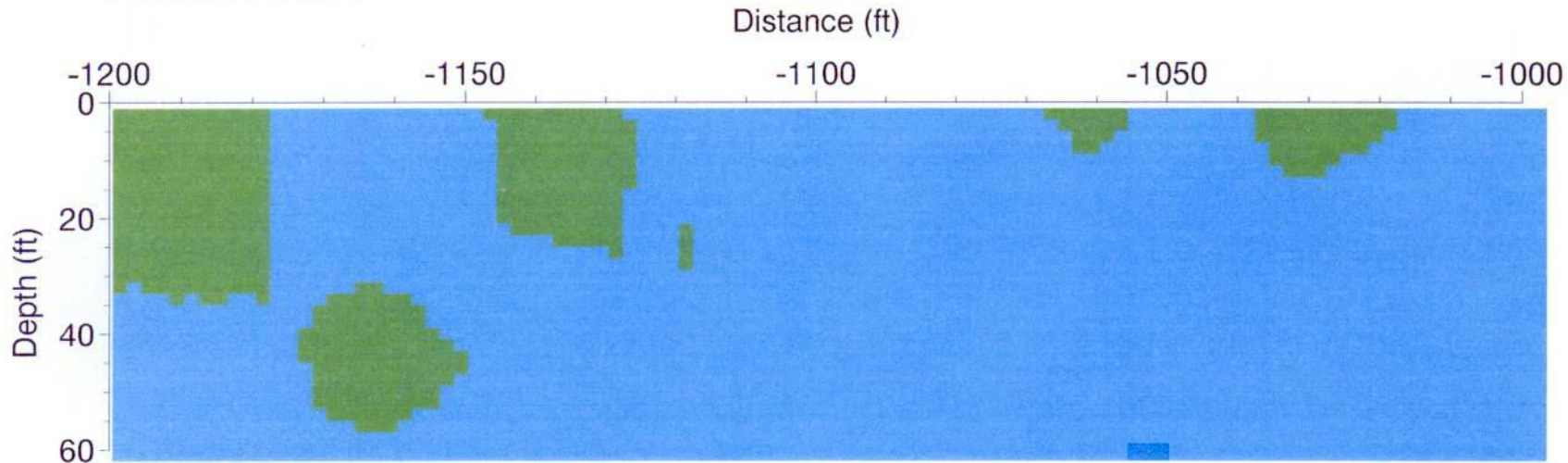
CSSA VLF: South Area SE-NW

Profile: 0100W



CSSA VLF: MW8 - MW10 @ 1200 - 1000

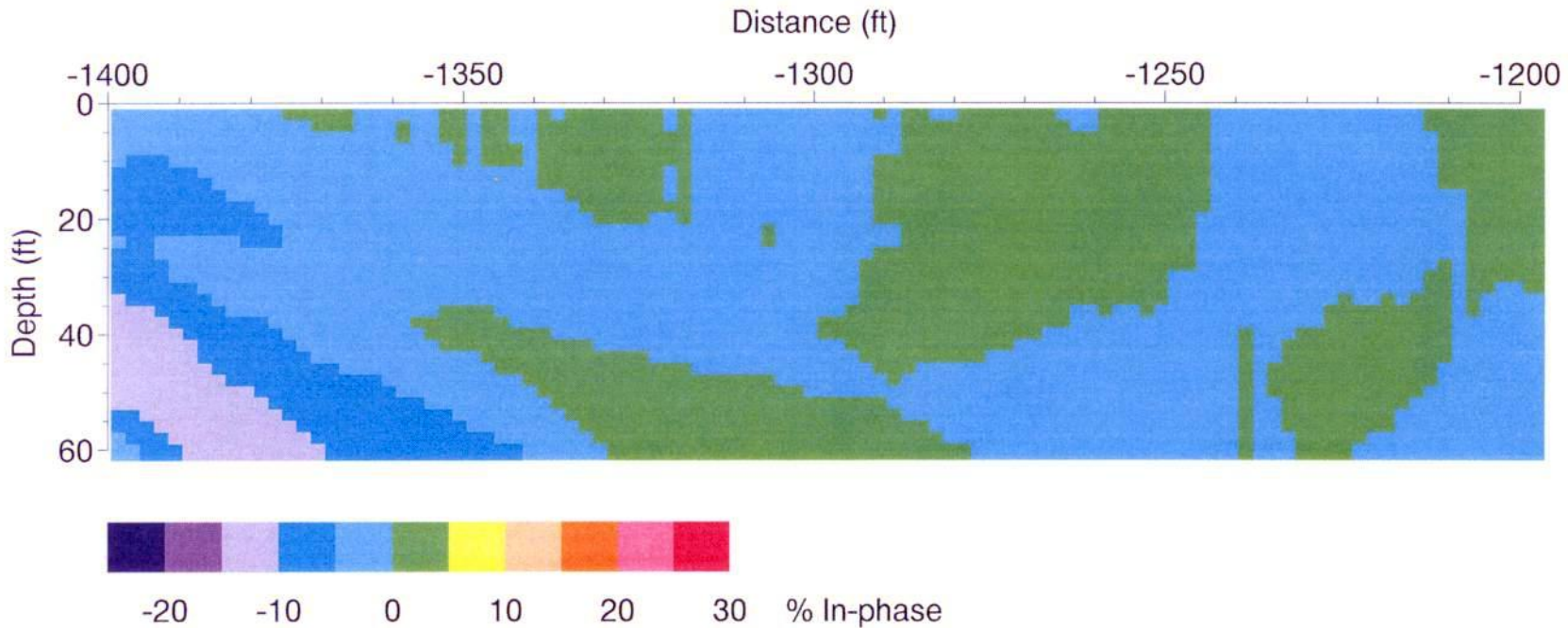
Profile: 0000W



% In-phase

CSSA VLF: MW8 - MW10 @ 1400 - 1200

Profile: 0000W

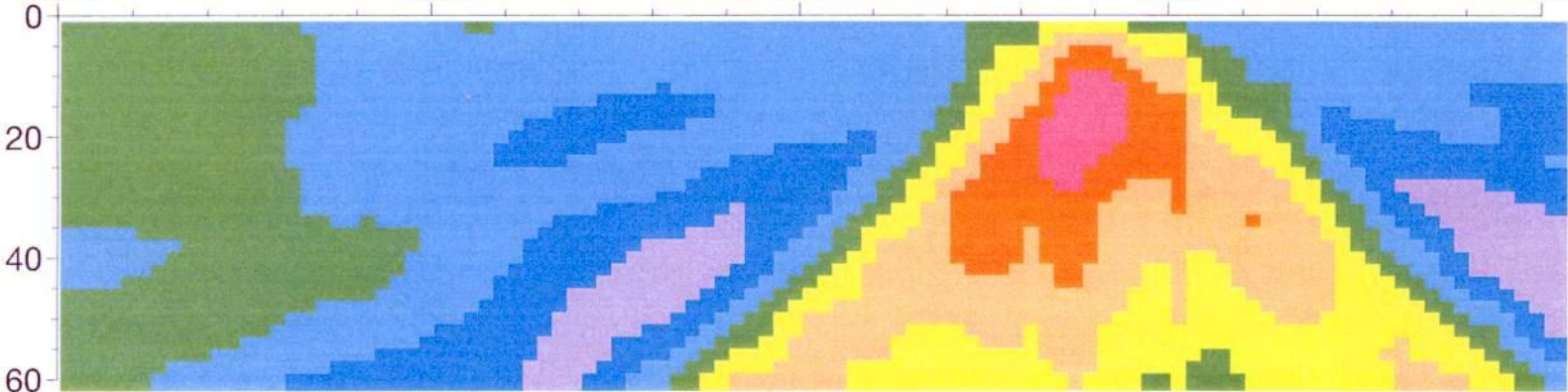


CSSA VLF: MW8 - MW10 @ 1600 - 1400

Profile: 0000W

Distance (ft)

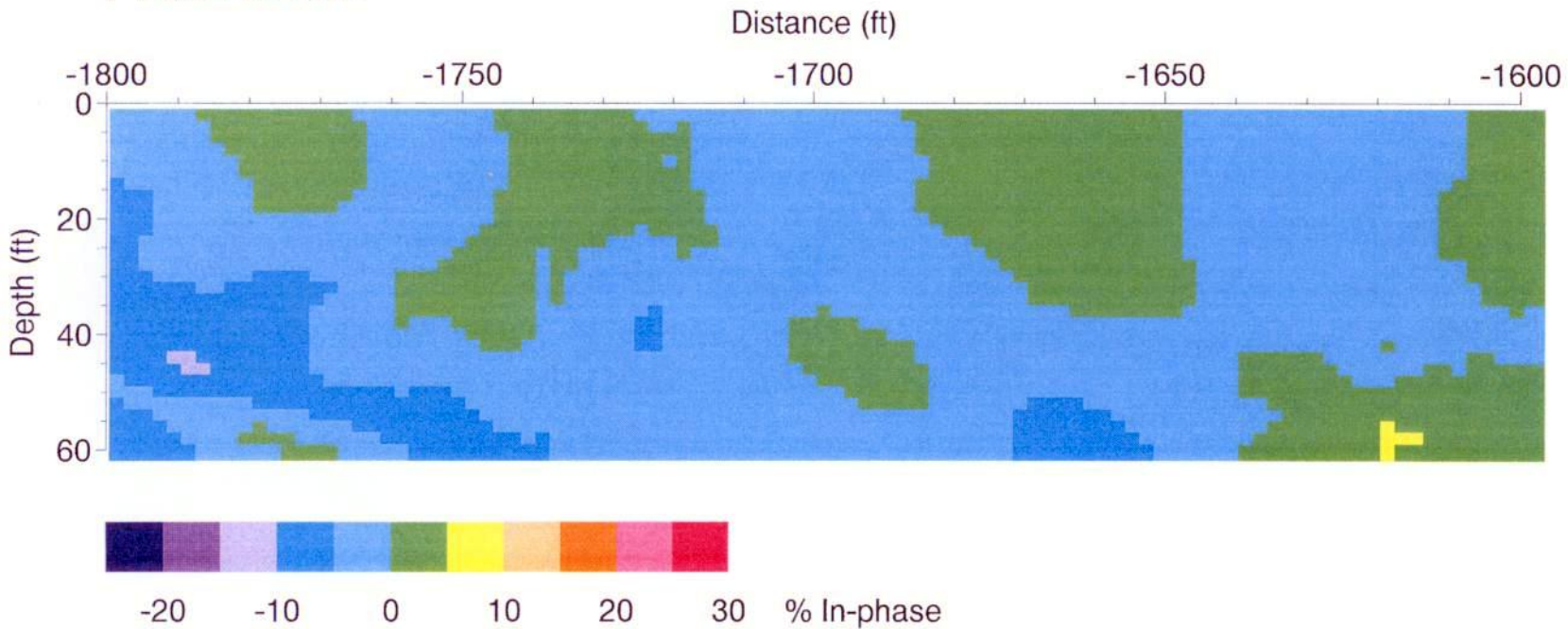
-1600 -1550 -1500 -1450 -1400



% In-phase

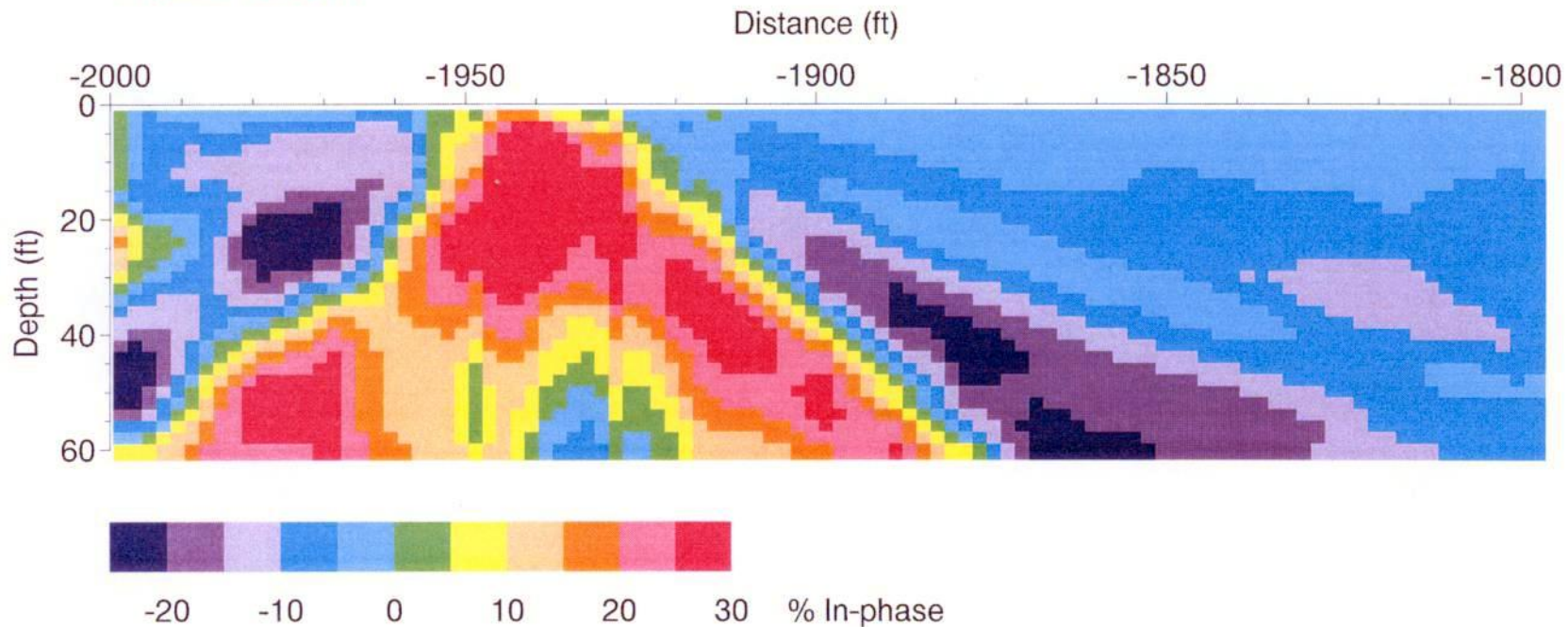
CSSA VLF: MW8 - MW10 @ 1800 - 1600

Profile: 0000W



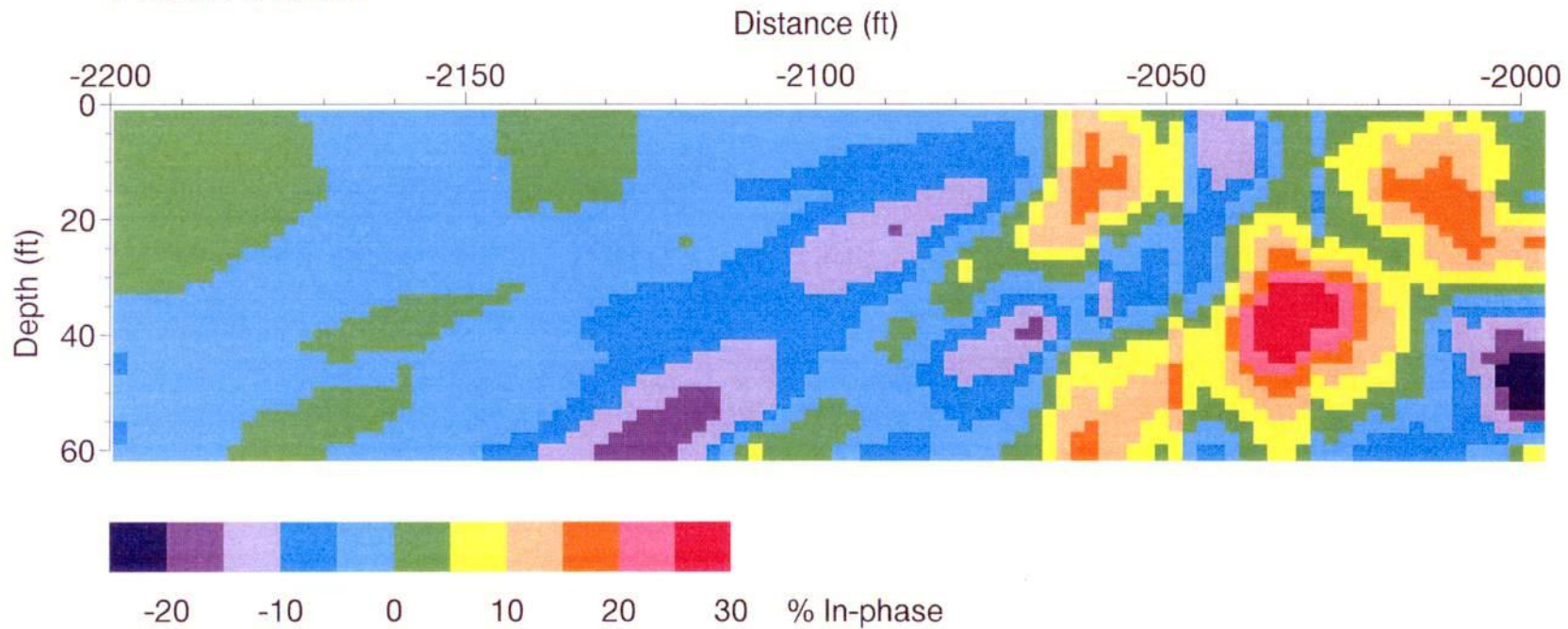
CSSA VLF: MW8 - MW10 @ 2000 - 1800

Profile: 0000W



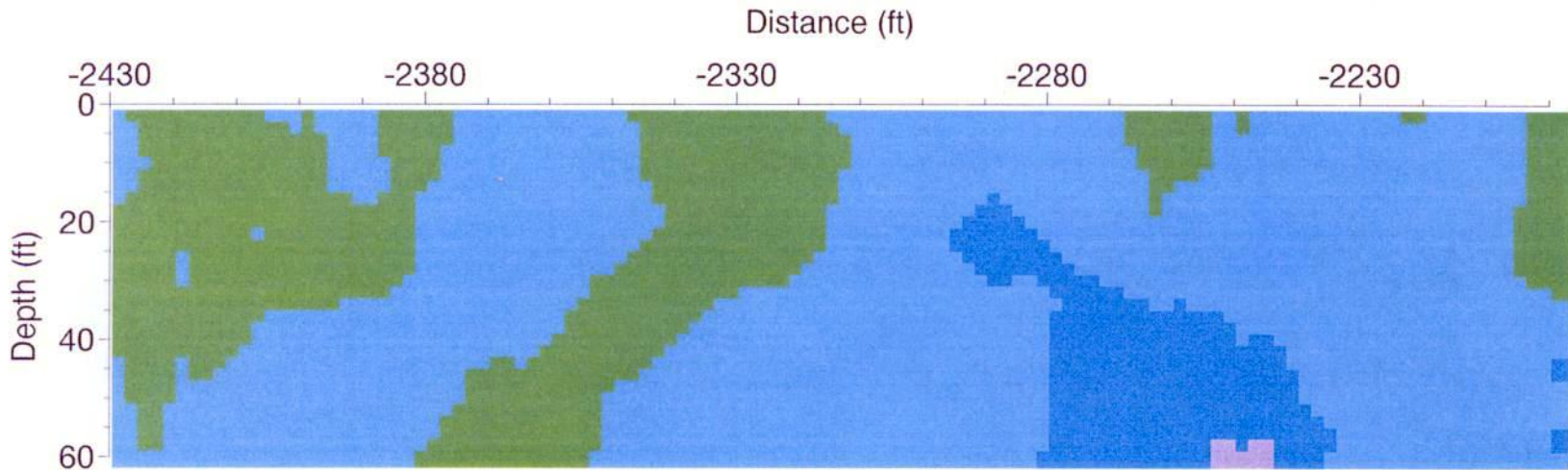
CSSA VLF: MW8 - MW10 @ 2200 - 2000

Profile: 0000W



CSSA VLF: MW8 - MW10 @ 2430 - 2200

Profile: 0000W



-20 -10 0 10 20 30 % In-phase