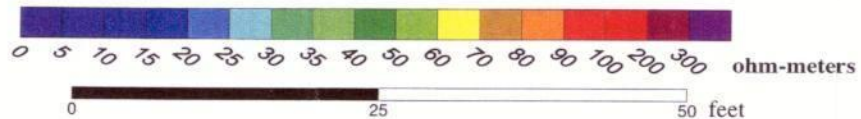
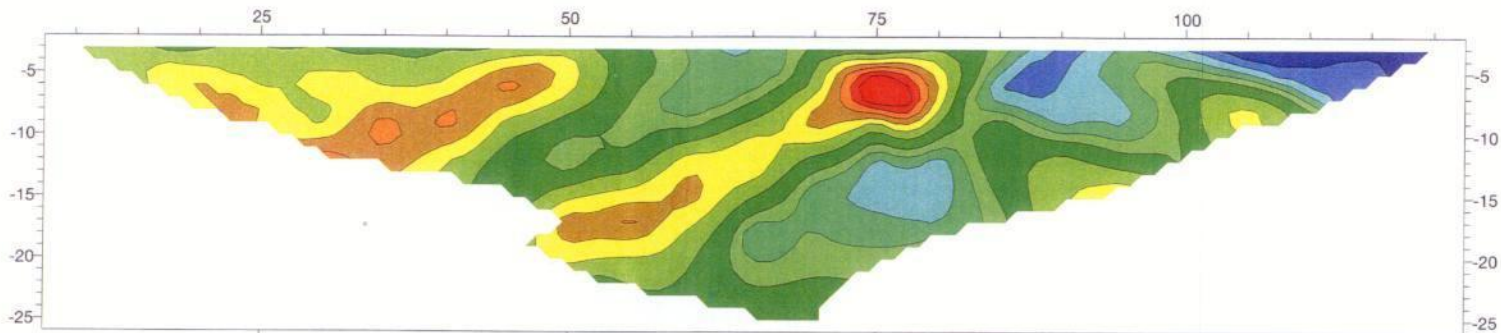
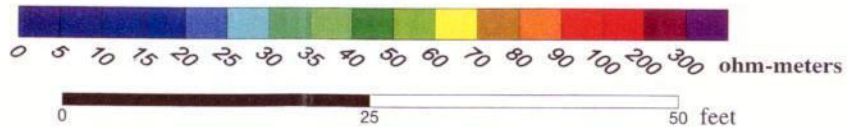
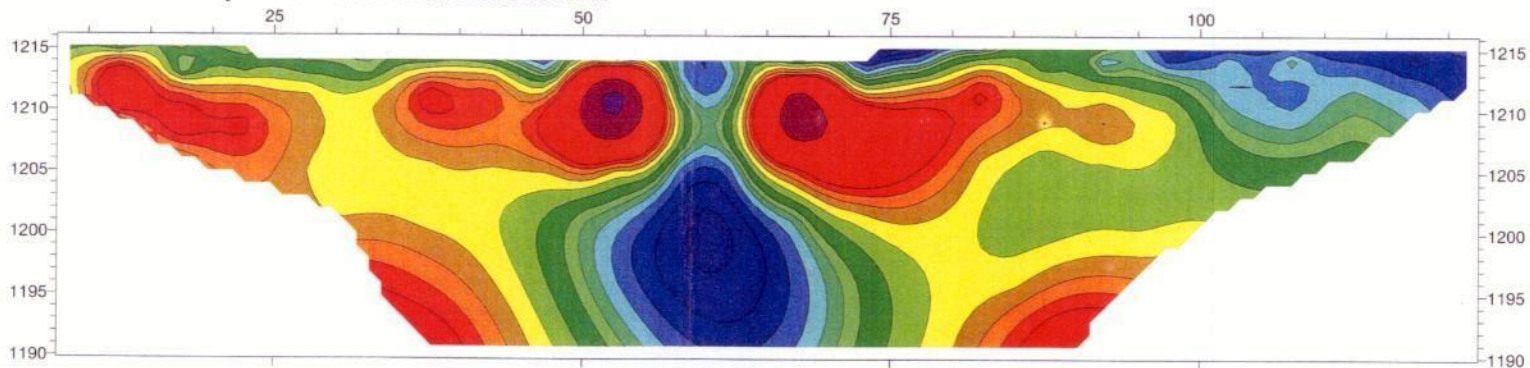


Profile: Line 510

Measured apparent resistivity section



Model resistivity section - 4.2% Inversion RMS error



MICROGRAVITY SURVEY RESULTS

AOC 65 Treatability Study

Camp Stanley Storage Area, Boerne, TX

Latitude Correction	0.096
Base Elevation:	1216.88
Elevation Correction	69.360
Observed Gravity	117.362

MICROGRAVITY SURVEY RESULTS

AOC 65 Treatability Study

Camp Stanley Storage Area, Boerne, TX

Profile:	LINE510		
Date collected:	12/21/2001		
Instrument counter reading:	27438		
Density of bedrock unit:	2.90	g/cm ^{***}	
Latitude of starting (0) point:	29deg 41' 07"=	29.685	deg.
Gravity change with latitude:	0.000213	mGals/ft	

Station	Time	Instrument Reading	Drift	Elevation	Elevation Correction	Latitude Correction	Gravity Anomaly
0	9:58	47.906	0.004	1216.78	69.354	0.109	-0.106
10	10:08	47.904	0.005	1215.98	69.308	0.109	-0.155
20	10:12	47.906	0.006	1216.00	69.310	0.109	-0.152
30	10:15	47.905	0.006	1215.86	69.302	0.109	-0.162
40	10:20	47.906	0.006	1215.76	69.296	0.109	-0.167
50	10:23	47.910	0.007	1215.68	69.291	0.109	-0.168
60	10:33	47.907	0.007	1215.36	69.273	0.109	-0.189
70	10:38	47.907	0.006	1215.95	69.307	0.109	-0.155
80	10:43	47.908	0.006	1216.21	69.322	0.109	-0.139
90	10:46	47.906	0.006	1216.57	69.342	0.109	-0.120
100	10:49	47.908	0.005	1216.90	69.361	0.109	-0.099
110	10:56	47.907	0.007	1217.08	69.371	0.109	-0.091
120	11:00	47.904	0.009	1217.16	69.376	0.109	-0.091
130	11:03	47.900	0.010	1217.21	69.379	0.109	-0.094

Base Gravity Readings		
Location	Time	Instrument Reading
base	9:40	47.901
base	10:04	47.906
base	10:28	47.908
base	10:53	47.906
base	11:06	47.913
Average:		47.907

Microgravity Survey Profile: LINE510

CSSA, Boerne, TX

