

**SOIL GAS SURVEYS AT AOCS 37, 41, AND 66  
DAILY ANALYTICAL RESULTS PACKAGE  
CAMP STANLEY STORAGE ACTIVITY – BOERNE, TEXAS**

**ANALYST: MIKE RODDY  
PARSONS ENGINEERING SCIENCE, INC.**

**DECEMBER 15, 1999**

**Daily Calibration Standards**

AOC37-01

AOC37-02

AOC37-03

AOC37-04

AOC37-05

AOC37-06

AOC41-36 (Dup)

AOC41-36

AOC41-37

AOC41-38

AOC41-39 (Dup)

AOC41-39

AOC41-40

AOC66-77 (Dup)

AOC66-77

AOC66-78

AOC66-94

AOC66-96

AOC66-97

AOC66-98

AOC66-99

AOC66-100

AOC66-101

/.B/  
/.A/  
FI= 1. FE= 1. MN= 5.  
PRESS 'ENTER' TO SKIP ENTRY  
ENABLE BASELINE DRAWING? [Y/N] (N)  
STORAGE MENU? [Y,N] (N)

FUNCTION NUMBER [0-10] (0) 9

9. DELETE STORED DATA

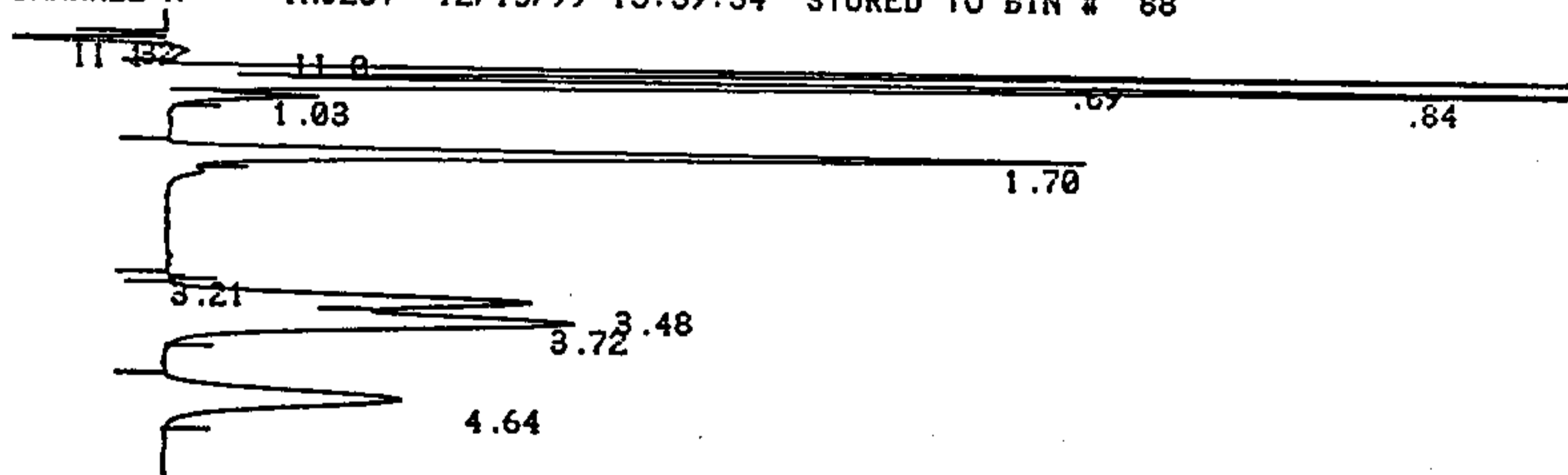
DELETE BINS FROM 1 TO 126  
ARE YOU SURE ? [Y/N] (N)Y

DATA IN BINS 1 TO 126 HAVE BEEN DELETED

STORAGE MENU? [Y,N] (N)  
DS1.A FAULT 100: AT 15005

/.B/  
/.A/

CHANNEL A INJECT 12/15/99 13:39:34 STORED TO BIN # 88



DATA SAVED TO BIN # 88

CSSA 12/15/99 13:39:34 CH= "A" PS= 1.  
FILE 1. METHOD 5. RUN 226 INDEX 1 BIN 88

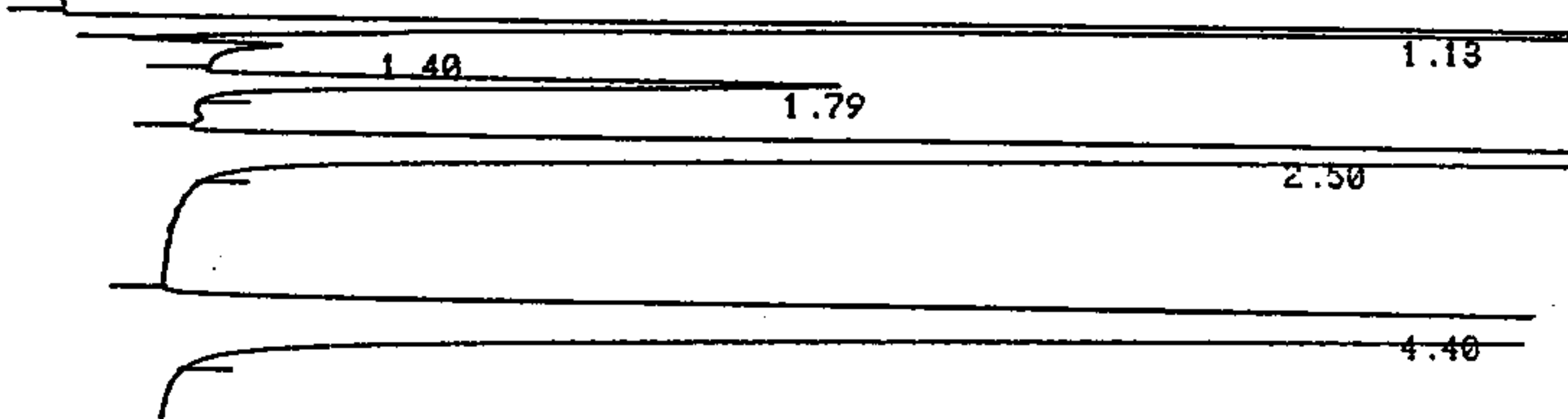
ANALYST: RODDY

SAMPLE 1 AOC66-76 BIN 88 NAME ARUN0216

SA IS XF  
300. 0. 0.

NAME	UG/L	RT	AREA BC	RF
1	0.	0.32	4433 01	
CISDCE	22.345	0.69	114844 02	17.132
BENZENE	15.326	0.84	159539 02	34.7
TCE	2.592	1.03	13905 03	17.88
TOLUENE	13.643	1.7	110830 01	27.079
6	0.	3.21	490 01	
7	0.	3.48	77651 02	
EBENZENE	17.309	3.72	99033 03	19.072
O-XYLENE	14.034	4.64	69347 01	16.471
TOTALS	85.249		650072	

CHANNEL B INJECT 12/15/99 13:39:44 REPLAYED FROM BIN # 20  
AZ 1



ER 0  
DATA SAVED TO BIN # 20

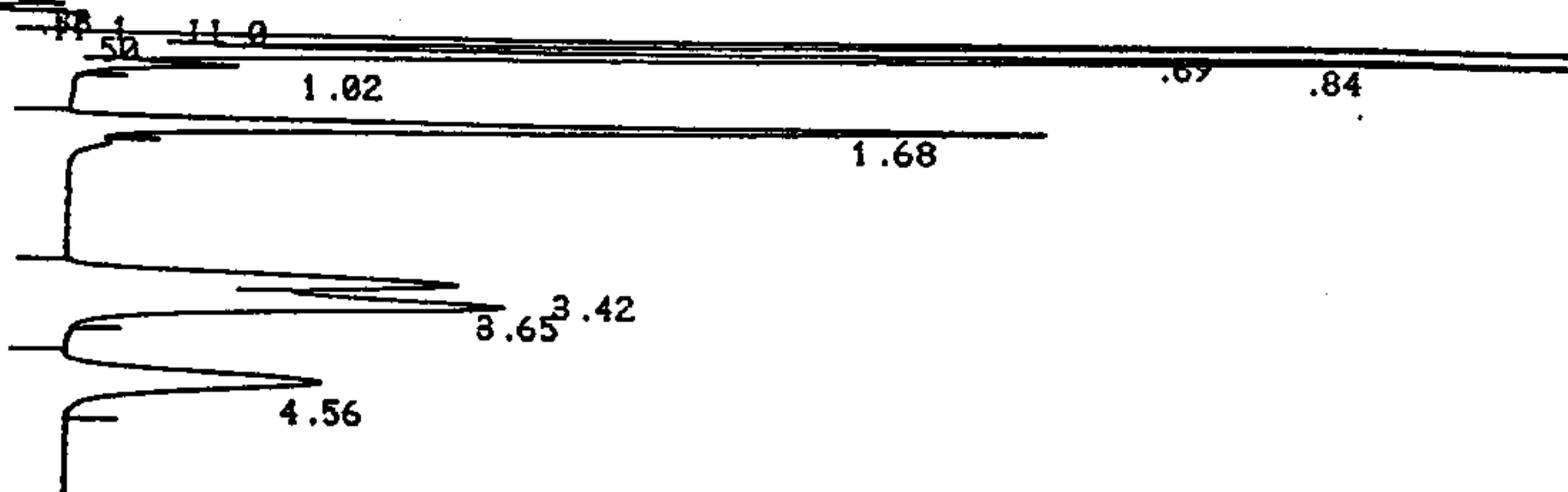
CSSA 12/15/99 13:39:44 CH= "B" PS= 1.  
FILE 1. METHOD 5. RUN 216 INDEX 1 BIN 20

ANALYST: RODDY

SAMPLE 1 STD -39D BIN 20 NAME BRUN0212

SA 100. IS 0. XF 0.

NAME	UG/L	RT	AREA BC	RF
1	0.	1.13	391687 08	
2	0.	1.4	28612 06	
CISDCE	85.192	1.79	98464 07	11.558
TCE	9.177	2.5	574241 01	625.705
PCE	4.667	4.4	1065505 01	2283.128
TOTALS	99.036		2158509	



DATA SAVED TO BIN # 89

CSSA 12/15/99 13:47:20 CH= "A" PS= 1.

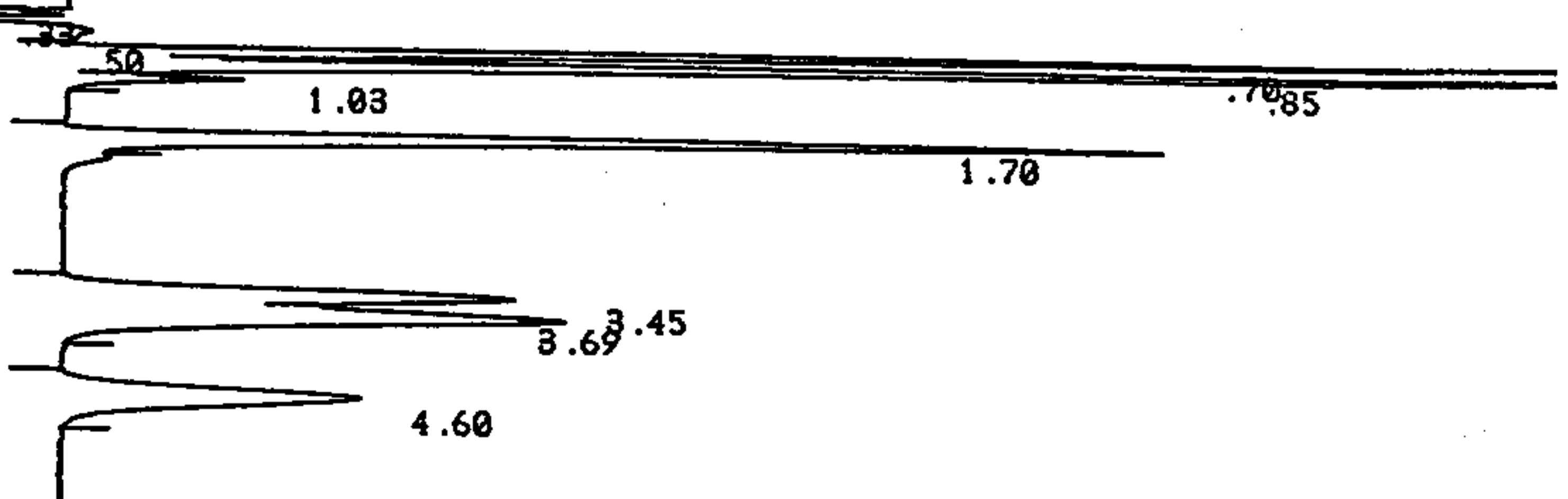
FILE 1. METHOD 5. RUN 227 INDEX 1 BIN 89

ANALYST: RODDY

SAMPLE 1 STD -76 BIN 89 NAME ARUN0217

SA 100. IS 0. XF 0.

NAME	UG/L	RT	AREA BC	RF
1	0.	0.33	5303 03	
2	0.	0.5	3048 02	
CISDCE	68.039	0.69	116561 02	17.132
BENZENE	46.966	0.84	162975 02	34.7
TCE	8.187	1.02	14638 03	17.88
TOLUENE	40.105	1.68	108600 01	27.079
EBENZENE	40.744	3.42	77706 02	19.072
M/P-XYLENE	42.045	3.65	97662 03	23.228
O-XYLENE	42.509	4.56	70017 01	16.471
TOTALS	288.595		656510	



DATA SAVED TO BIN # 90

CSSA 12/15/99 13:53:57 CH= "A" PS= 1.  
FILE 1. METHOD 5. RUN 228 INDEX 1 BIN 90


ANALYST: RODDY

SAMPLE 1 STD -76 BIN 90 NAME ARUN0218

SA 100. IS 0. XF 0.

NAME	UG/L	RT	AREA	BC	RF
1	0.	0.33	5856	02	
2	0.	0.5	51668	02	
CISDCE	88.306	0.7	151283	02	17.132
BENZENE	57.255	0.85	198675	02	34.7
TCE	12.956	1.03	23165	03	17.88
TOLUENE	45.876	1.7	124228	01	27.079
EBENZENE	47.893	3.45	91340	02	19.072
M/P-XYLENE	49.146	3.69	114156	03	23.228
O-XYLENE	49.492	4.6	81520	01	16.471
TOTALS	350.924		841891		

CHANNEL A INJECT 12/15/99 14:00:52 STORED TO BIN # 91



1.73

DATA SAVED TO BIN # 91

CSSA 12/15/99 14:00:52 CH= "A" PS= 1.  
FILE 1. METHOD 5. RUN 229 INDEX 1 BIN 91

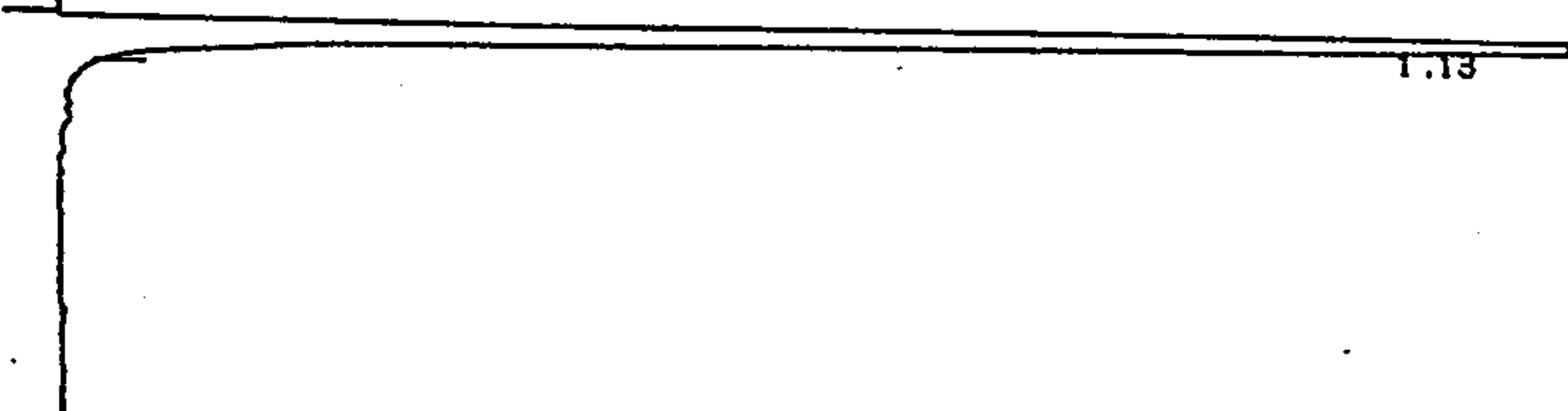
ANALYST: RODDY

SAMPLE 1 BLANK-76 BIN 91 NAME ARUN0219

SA 300. IS 0. XF 0.

NAME	UG/L	RT	AREA BC	RF
TOLUENE	0.305	1.73	2478 01	27.079
TOTALS	0.305		2478	

CHANNEL B INJECT 12/15/99 14:01:00 REPLAYED FROM BIN # 21  
AZ 1



ER 0  
DATA SAVED TO BIN # 21

CSSA 12/15/99 14:01:00 CH= "B" PS= 1.  
FILE 1. METHOD 5. RUN 217 INDEX 1 BIN 21

ANALYST: RODDY

SAMPLE 1 BLANK-39D BIN 21 NAME BRUN0213

SA 300. IS 0. XF 0.

NAME	UG/L	RT	AREA BC	RF
1	0.	1.13	1418859 01	
TOTALS	0.		1418859	

CHANNEL A INJECT 12/15/99 14:08:45 STORED TO BIN # 92



1.70

DATA SAVED TO BIN # 92

CSSA 12/15/99 14:08:45 CH= "A" PS= 1.

FILE 1. METHOD 5. RUN 230 INDEX 1 BIN 92

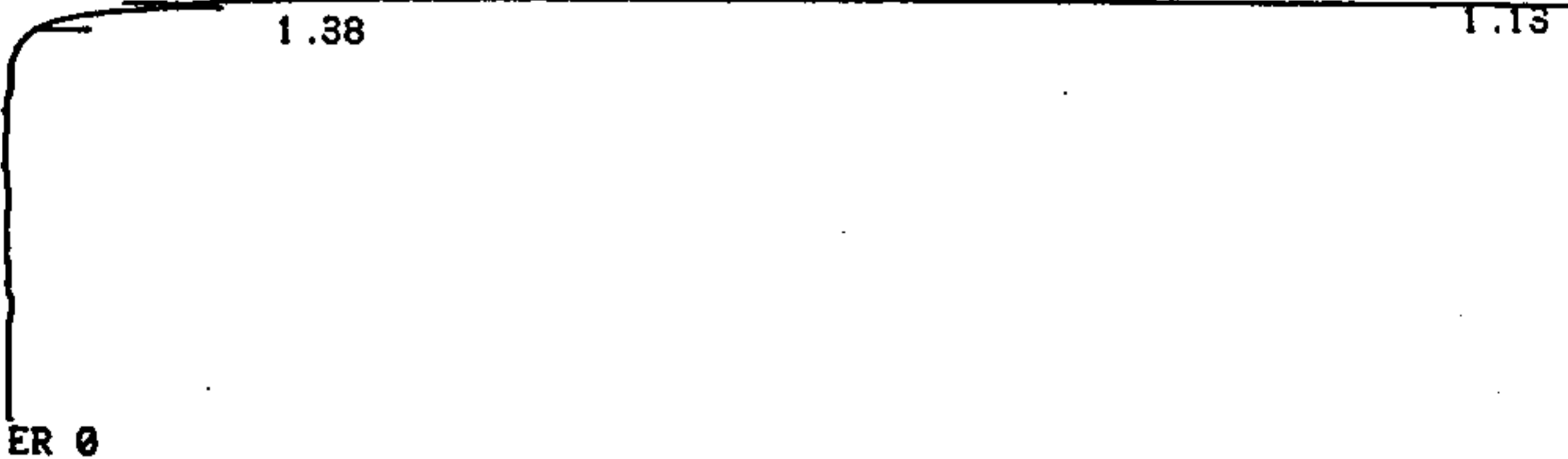
ANALYST: RODDY

SAMPLE 1 AOC66-98 BIN 92 NAME ARUN0220

SA IS XF  
300. 0. 0.

NAME	UG/L	RT	AREA BC	RF
TOLUENE	0.355	1.7	2884 01	27.079
TOTALS	0.355		2884	

CHANNEL B INJECT 12/15/99 14:08:58 REPLAYED FROM BIN # 22  
AZ 1



DATA SAVED TO BIN # 22

CSSA 12/15/99 14:08:58 CH= "B" PS= 1.

FILE 1.. METHOD 5. RUN 218 INDEX 1 BIN 22

ANALYST: RODDY

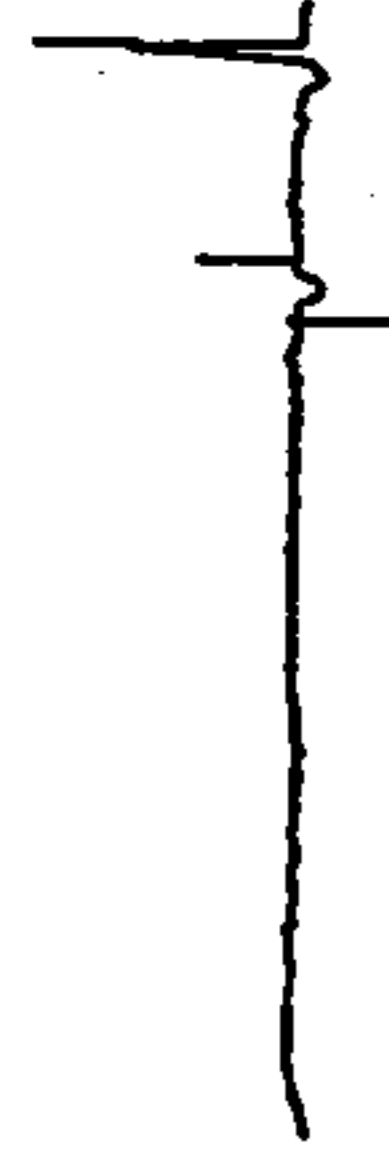
SAMPLE 1 AOC66-98 BIN 22 NAME BRUN0214

SA IS XF  
300. 0. 0.

NAME	UG/L	RT	AREA BC	RF
------	------	----	---------	----

1	0.	1.13	1663125 08
2	0.	1.38	139 05
TOTALS	0.		1663264

CHANNEL A INJECT 12/15/99 14:16:44 STORED TO BIN # 93



1.70

DATA SAVED TO BIN # 93

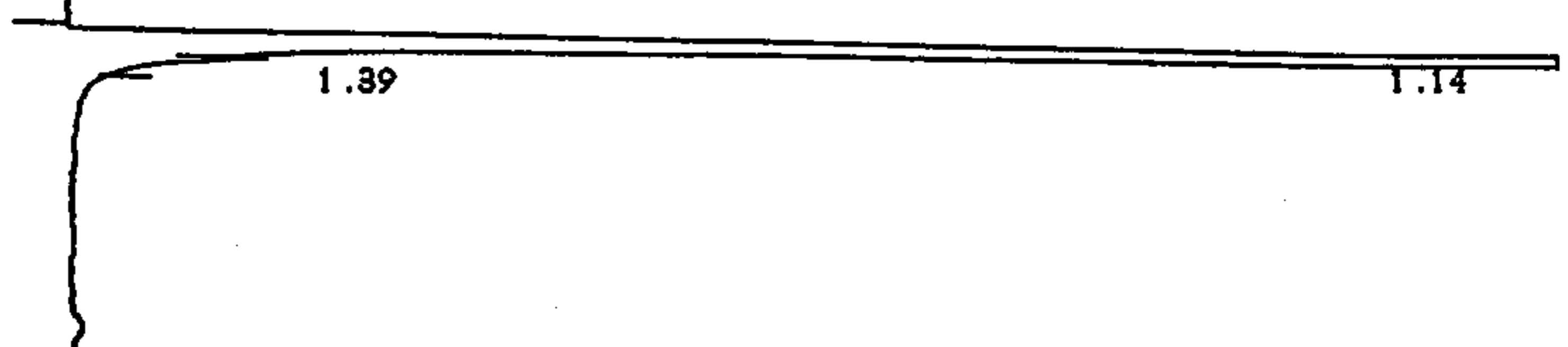
CSSA 12/15/99 14:16:44 CH= "A" PS= 1.  
 FILE 1. METHOD 5. RUN 231 INDEX 1 BIN 93

ANALYST: RODDY

SAMPLE 1 AOC66-100 BIN 93 NAME ARUN0221  
 SA 300. IS 0. XF 0.

NAME	UG/L	RT	AREA BC	RF
TOLUENE	0.248	1.7	2018 01	27.079
TOTALS	0.248		2018	

CHANNEL B INJECT 12/15/99 14:16:57 REPLAYED FROM BIN # 23  
 AZ 1



1.39

1.14



ER 0

DATA SAVED TO BIN # 23

CSSA 12/15/99 14:16:57 CH= "B" PS= 1.

FILE 1. METHOD 5. RUN 219 INDEX 1 BIN 23

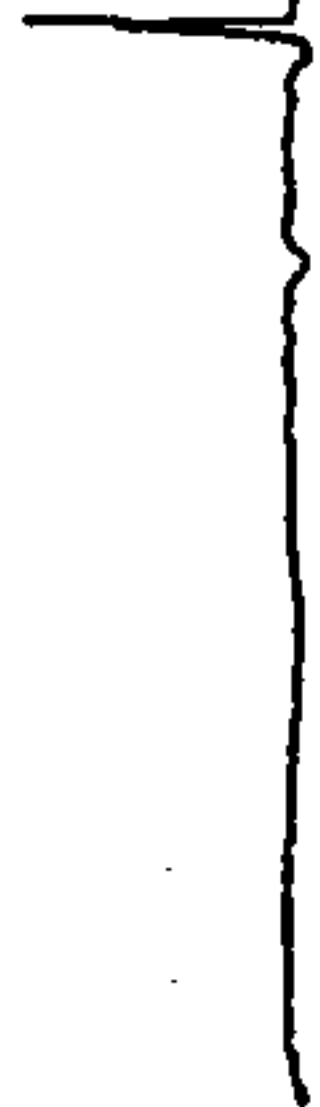
ANALYST: RODDY

SAMPLE 1 AOC66-100 BIN 23 NAME BRUN0215

SA 300. IS 0. XF 0.

NAME	UG/L	RT	AREA	BC	RF
1	0.	1.14	1582784	08	
2	0.	1.39	117	05	
TOTALS	0.		1582901		

CHANNEL A INJECT 12/15/99 14:25:05 STORED TO BIN # 94



DATA SAVED TO BIN # 94

CSSA 12/15/99 14:25:05 CH= "A" PS= 1.

FILE 1. METHOD 5. RUN 232 INDEX 1 BIN 94

ANALYST: RODDY

SAMPLE 1 AOC66-97 BIN 94 NAME ARUN0222

SA 300. IS 0. XF 0.

NAME	UG/L	RT	AREA	BC	RF
------	------	----	------	----	----

TOTALS 0.

CHANNEL B INJECT 12/15/99 14:25:19 REPLAYED FROM BIN # 24  
AZ 1

1.13

ER 0  
DATA SAVED TO BIN # 24

CSSA 12/15/99 14:25:19 CH= "B" PS= 1.  
FILE 1. METHOD 5. RUN 220 INDEX 1 BIN 24

ANALYST: RODDY

SAMPLE 1 AOC66-97 BIN 24 NAME BRUN0216

SA IS XF  
300. 0. 0.

NAME	UG/L	RT	AREA BC	RF
1	0.	1.13	1661111 01	
TOTALS	0.		1661111	

CHANNEL A INJECT 12/15/99 14:33:18 STORED TO BIN # 95

DATA SAVED TO BIN # 95

CSSA 12/15/99 14:33:18 CH= "A" PS= 1.

FILE 1. METHOD 5. RUN 233 INDEX 1 BIN 95

ANALYST: RODDY

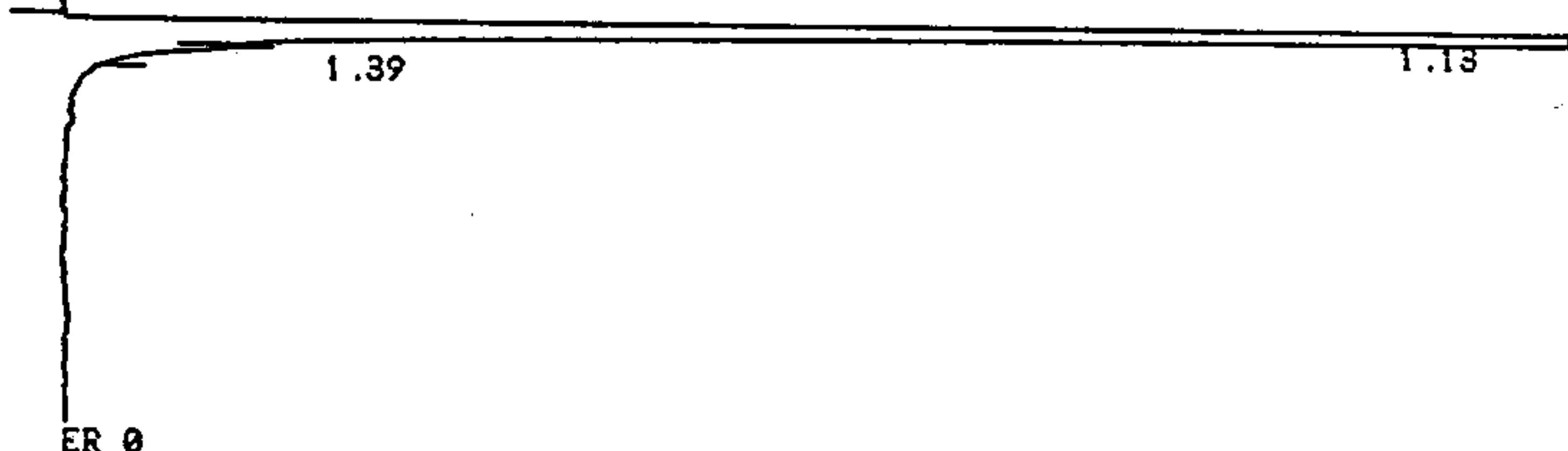
SAMPLE 1 AOC66-99 BIN 95 NAME ARUN0223

SA 300. IS 0. XF 0.

NAME UG/L RT AREA BC RF

TOTALS 0.

CHANNEL B INJECT 12/15/99 14:33:33 REPLAYED FROM BIN # 25  
AZ 1



ER 0

DATA SAVED TO BIN # 25

CSSA 12/15/99 14:33:33 CH= "B" PS= 1.

FILE 1. METHOD 5. RUN 221 INDEX 1 BIN 25

ANALYST: RODDY

SAMPLE 1 AOC66-99 BIN 25 NAME BRUN0217

SA 300. IS 0. XF 0.

NAME UG/L RT AREA BC RF

1 0. 1.13 1372343 08  
2 0. 1.39 105 05

TOTALS 0. 1372448

CHANNEL A

INJECT 12/15/99 14:44:43 STORED TO BIN # 96

DATA SAVED TO BIN # 96

CSSA 12/15/99 14:44:43 CH= "A" PS= 1.

FILE 1. METHOD 5. RUN 234 INDEX 1 BIN 96

ANALYST: RODDY

SAMPLE 1 AOC66-96 BIN 96 NAME ARUN0224

SA 300. IS 0. XF 0.

NAME UG/L RT AREA BC RF

TOTALS 0.

CHANNEL B

INJECT 12/15/99 14:44:55 REPLAYED FROM BIN # 26  
AZ 1

1.14

ER 0

DATA SAVED TO BIN # 26

CSSA 12/15/99 14:44:55 CH= "B" PS= 1.

FILE 1. METHOD 5. RUN 222 INDEX 1 BIN 26

ANALYST: RODDY

SAMPLE 1 AOC66-96 BIN 26 NAME BRUN0218

SA 300. IS 0. XF 0.

NAME	UG/L	RT	AREA	BC	RF
1	0.	1.14	1626380	01	
TOTALS	0.		1626380		

CHANNEL A INJECT 12/15/99 14:52:57 STORED TO BIN # 97



ER 0  
DATA SAVED TO BIN # 97

CSSA 12/15/99 14:52:57 CH= "A" PS= 1.

FILE 1. METHOD 5. RUN 235 INDEX 1 BIN 97

ANALYST: RODDY

SAMPLE 1 AOC66-94 BIN 97 NAME ARUN0225

SA 300. IS 0. XF 0.

NAME	UG/L	RT	AREA	BC	RF
TOTALS	0.				

CHANNEL B

INJECT 12/15/99 14:53:11 REPLAYED FROM BIN # 27  
AZ 1

1.13

ER 0

DATA SAVED TO BIN # 27

CSSA 12/15/99 14:53:11 CH= "B" PS= 1.

FILE 1. METHOD 5. RUN 223 INDEX 1 BIN 27

ANALYST: RODDY

SAMPLE 1 AOC66-94 BIN 27 NAME BRUN0219

SA 300. IS 0. XF 0.

NAME UG/L RT AREA BC RF

1 0. 1.13 1596631 01

TOTALS 0. 1596631

CHANNEL A

INJECT 12/15/99 15:01:31 STORED TO BIN # 98

DATA SAVED TO BIN # 98

CSSA 12/15/99 15:01:31 CH= "A" PS= 1.  
FILE 1. METHOD 5. RUN 236 INDEX 1 BIN 98

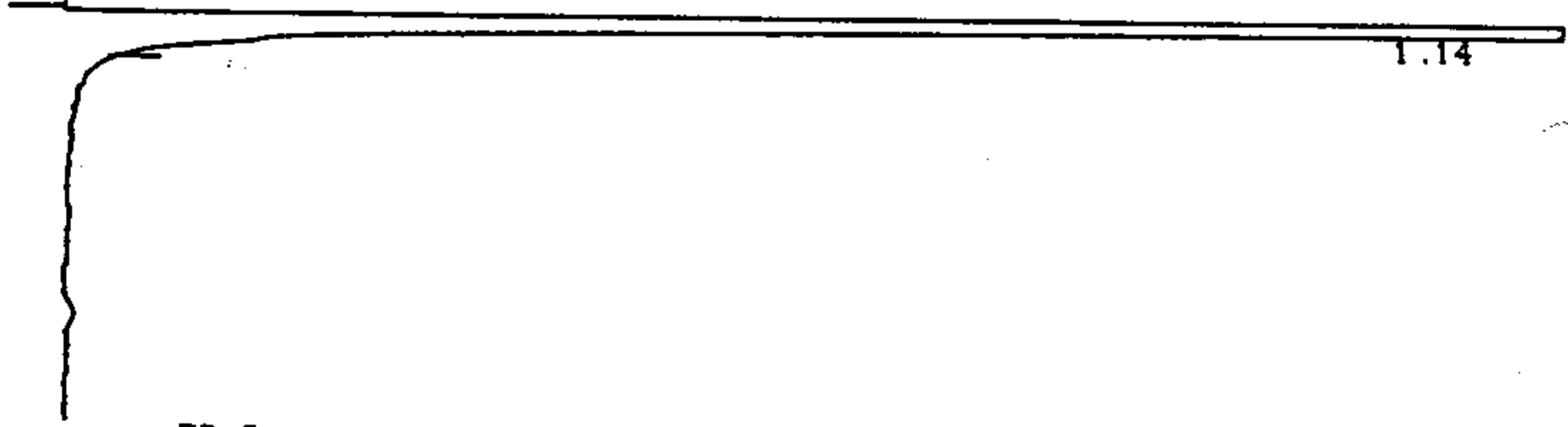
ANALYST: RODDY

SAMPLE 1 AOC66-<sup>77</sup>~~24~~ BIN 98 NAME ARUN0226

SA 300. IS 0. XF 0.

NAME UG/L RT AREA BC RF  
TOTALS 0.

CHANNEL B INJECT 12/15/99 15:01:43 REPLAYED FROM BIN # 28  
AZ 1



ER 0  
DATA SAVED TO BIN # 28

CSSA 12/15/99 15:01:43 CH= "B" PS= 1.  
FILE 1. METHOD 5. RUN 224 INDEX 1 BIN 28

ANALYST: RODDY

SAMPLE 1 AOC66-<sup>77</sup>~~24~~ BIN 28 NAME BRUN0220

SA 300. IS 0. XF 0.

NAME UG/L RT AREA BC RF  
1 0. 1.14 1974064 01  
TOTALS 0. 1974064

CHANNEL A

INJECT 12/15/99 15:10:38 STORED TO BIN # 99

DATA SAVED TO BIN # 99

CSSA 12/15/99 15:10:38 CH= "A" PS= 1.  
 FILE 1. METHOD 5. RUN 237 INDEX 1 BIN 99

ANALYST: RODDY

SAMPLE 1 AOC66-101 BIN 99 NAME ARUN0227

SA 300. IS 0. XF 0.

NAME UG/L RT AREA BC RF

TOTALS 0.

CHANNEL B

INJECT 12/15/99 15:10:52 REPLAYED FROM BIN # 29  
 AZ 1

1.14

ER 0

DATA SAVED TO BIN # 29



CSSA 12/15/99 15:10:52 CH= "B" PS= 1.

FILE 1. METHOD 5. RUN 225 INDEX 1 BIN 29

ANALYST: RODDY

SAMPLE 1 AOC66-101 BIN 29 NAME BRUN0221

SA 300. IS 0. XF 0.

NAME UG/L RT AREA BC RF

1 0. 1.14 1683630 01

TOTALS 0. 1683630

CHANNEL A INJECT 12/15/99 15:18:16 STORED TO BIN # 100



ER 0

DATA SAVED TO BIN # 100

CSSA 12/15/99 15:18:16 CH= "A" PS= 1.

FILE 1. METHOD 5. RUN 238 INDEX 1 BIN 100

ANALYST: RODDY

SAMPLE 1 AOC66-78 BIN 100 NAME ARUN0228

SA 300. IS 0. XF 0.

NAME UG/L RT AREA BC RF

TOTALS 0.

CHANNEL B

INJECT 12/15/99 15:18:28 REPLAYED FROM BIN # 30  
AZ 1

1.14

ER 0

DATA SAVED TO BIN # 30

CSSA 12/15/99 15:18:28 CH= "B" PS= 1.

FILE 1. METHOD 5. RUN 226 INDEX 1 BIN 30

ANALYST: RODDY

SAMPLE 1 AOC66-78 BIN 30 NAME BRUN0222

SA 300. IS 0. XF 0.

NAME	UG/L	RT	AREA	BC	RF
1	0.	1.14	1473358	01	

TOTALS 0. 1473358

CHANNEL A

INJECT 12/15/99 15:26:58 STORED TO BIN # 101

ER 0

DATA SAVED TO BIN # 101

CSSA 12/15/99 15:26:58 CH= "A" PS= 1.

FILE 1. METHOD 5. RUN 239 INDEX 1 BIN 101

ANALYST: RODDY

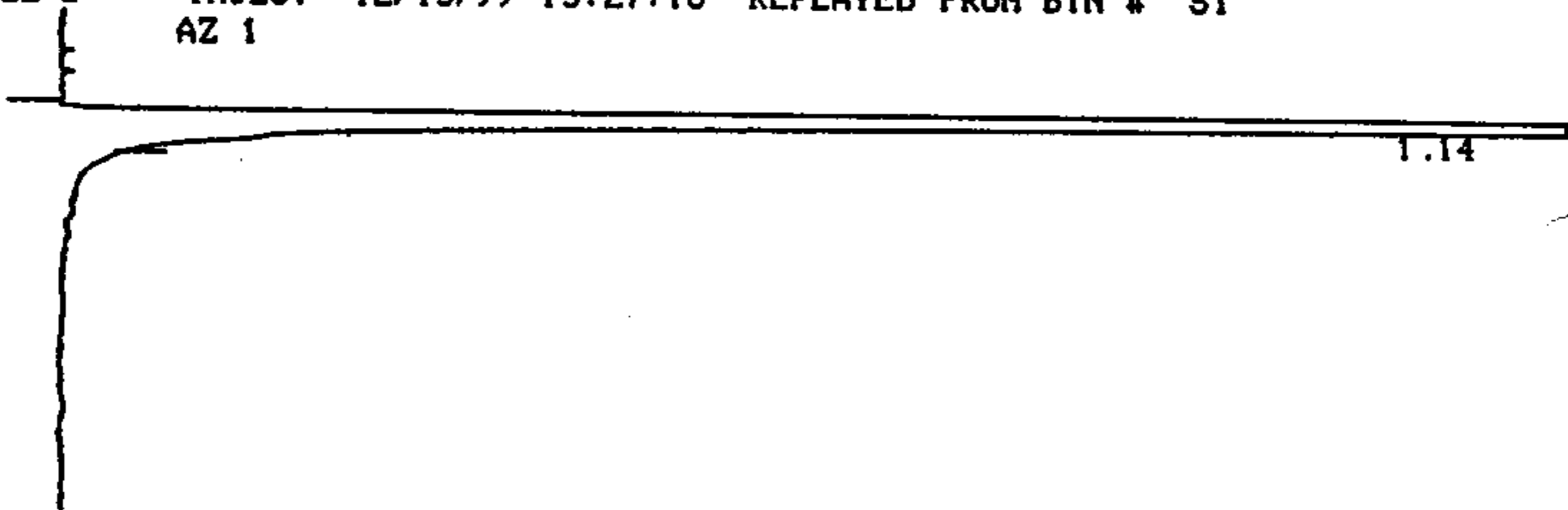
SAMPLE 1 AOC37-4 BIN 101 NAME ARUN0229

SA 300. IS 0. XF 0.

NAME UG/L RT AREA BC RF

TOTALS 0.

CHANNEL B INJECT 12/15/99 15:27:13 REPLAYED FROM BIN # 31  
AZ 1



ER 0

DATA SAVED TO BIN # 31

CSSA 12/15/99 15:27:13 CH= "B" PS= 1.

FILE 1. METHOD 5. RUN 227 INDEX 1 BIN 31

ANALYST: RODDY

SAMPLE 1 AOC37-4 BIN 31 NAME BRUN0223

SA 300. IS 0. XF 0.

NAME UG/L RT AREA BC RF

1 0. 1.14 1514005 01

TOTALS 0. 1514005

CHANNEL A

INJECT 12/15/99 15:35:27 STORED TO BIN # 102



DATA SAVED TO BIN # 102

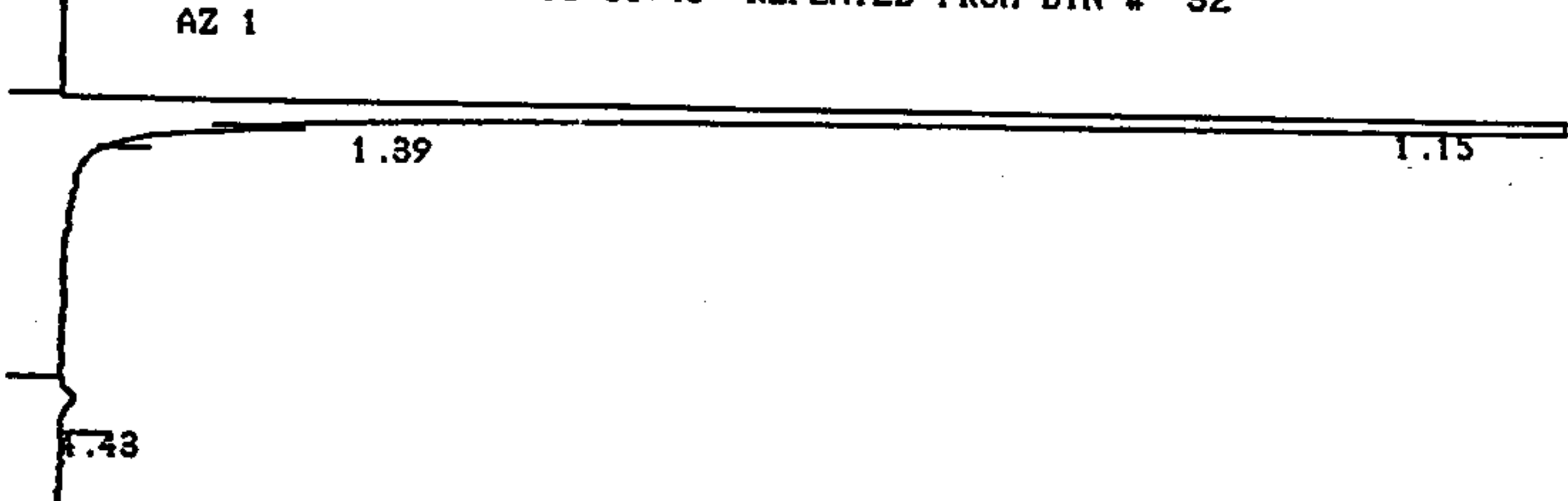
CSSA 12/15/99 15:35:27 CH= "A" PS= 1.  
 FILE 1. METHOD 5. RUN 240 INDEX 1 BIN 102  
 ANALYST: RODDY

SAMPLE 1 AOC37-2 BIN 102 NAME ARUN0230  
 SA 300. IS 0. XF 0.

NAME	UG/L	RT	AREA	BC	RF
TOTALS	0.				

CHANNEL B

INJECT 12/15/99 15:35:40 REPLAYED FROM BIN # 32  
AZ 1



ER 0  
DATA SAVED TO BIN # 32

CSSA 12/15/99 15:35:40 CH= "B" PS= 1.

FILE 1. METHOD 5. RUN 228 INDEX 1 BIN 32

ANALYST: RODDY

SAMPLE 1 AOC37-2 BIN 32 NAME BRUN0224

SA 300. IS 0. XF 0.

NAME	UG/L	RT	AREA BC	RF
1	0.	1.15	1817877 08	
2	0.	1.39	192 05	
PCE	0.005	4.43	3300 01	2283.128
TOTALS	0.005		1821369	

CHANNEL A INJECT 12/15/99 15:42:59 STORED TO BIN # 103



DATA SAVED TO BIN # 103

CSSA 12/15/99 15:42:59 CH= "A" PS= 1.

FILE 1. METHOD 5. RUN 241 INDEX 1 BIN 103

ANALYST: RODDY

SAMPLE 1 AOC37-3 BIN 103 NAME ARUN0231

SA 300. IS 0. XF 0.

NAME	UG/L	RT	AREA BC	RF
TOLUENE	0.385	1.69	3126 01	27.079
TOTALS	0.385		3126	

CHANNEL B

INJECT 12/15/99 15:43:11 REPLAYED FROM BIN # 33  
AZ 1

1.14

4.40

ER 0

DATA SAVED TO BIN # 33

CSSA 12/15/99 15:43:11 CH= "B" PS= 1.

FILE 1. METHOD 5. RUN 229 INDEX 1 BIN 33

ANALYST: RODDY

SAMPLE 1 AOC37-3 BIN 33 NAME BRUN0225

SA 300. IS 0. XF 0.

NAME	UG/L	RT	AREA BC	RF
1	0.	1.14	1787200 01	
PCE	0.005	4.4	3598 01	2283.128
TOTALS	0.005		1790798	

CHANNEL A

INJECT 12/15/99 15:51:30 STORED TO BIN # 104

1.70

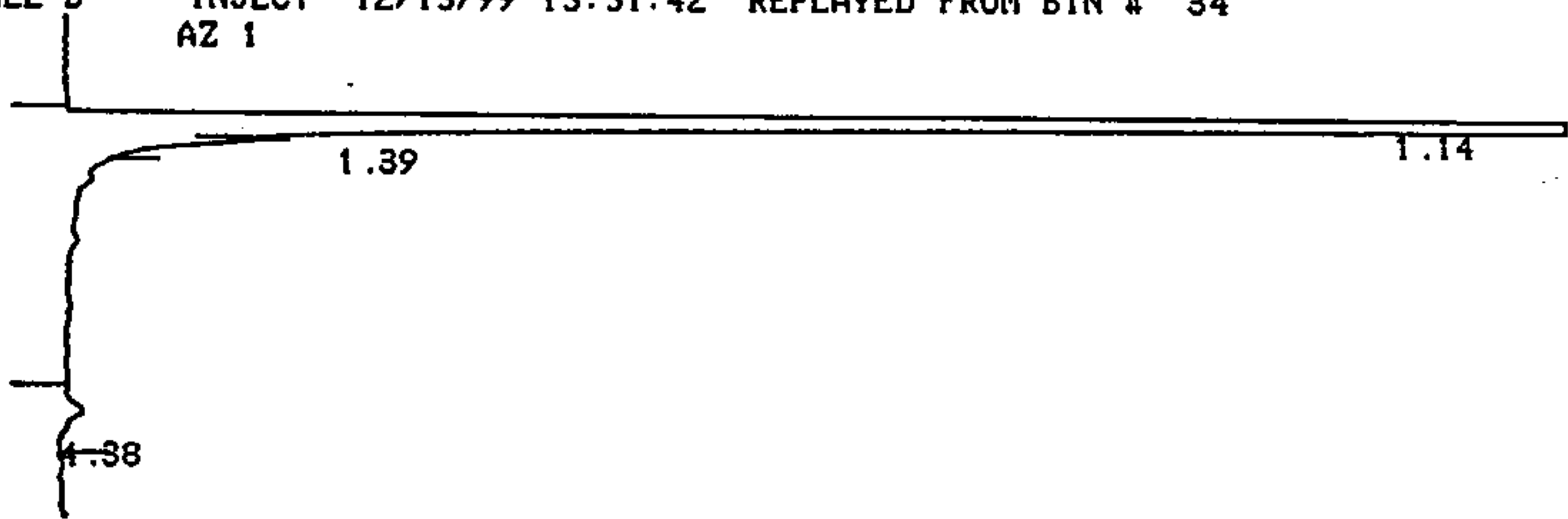
DATA SAVED TO BIN # 104

CSSA 12/15/99 15:51:30 CH= "A" PS= 1.  
FILE 1. METHOD 5. RUN 242 INDEX 1 BIN 104  
ANALYST: RODDY

SAMPLE 1 AOC37-1 BIN 104 NAME ARUN0232  
SA 300. IS 0. XF 0.

NAME	UG/L	RT	AREA BC	RF
TOLUENE	0.31	1.7	2519 01	27.079
TOTALS	0.31		2519	

CHANNEL B INJECT 12/15/99 15:51:42 REPLAYED FROM BIN # 34  
AZ 1



ER 0  
DATA SAVED TO BIN # 34

CSSA 12/15/99 15:51:42 CH= "B" PS= 1.  
FILE 1. METHOD 5. RUN 230 INDEX 1 BIN 34  
ANALYST: RODDY

SAMPLE 1 AOC37-1 BIN 34 NAME BRUN0226  
SA 300. IS 0. XF 0.

NAME	UG/L	RT	AREA BC	RF
1	0.	1.14	1971718 08	
2	0.	1.39	228 05	
PCE	0.007	4.38	4533 01	2283.128

TOTALS

0.007

1976479

CHANNEL A

INJECT 12/15/99 16:00:28 STORED TO BIN # 105



1.69

DATA SAVED TO BIN # 105

CSSA 12/15/99 16:00:28 CH= "A" PS= 1.

FILE 1. METHOD 5. RUN 243 INDEX 1 BIN 105

ANALYST: RODDY

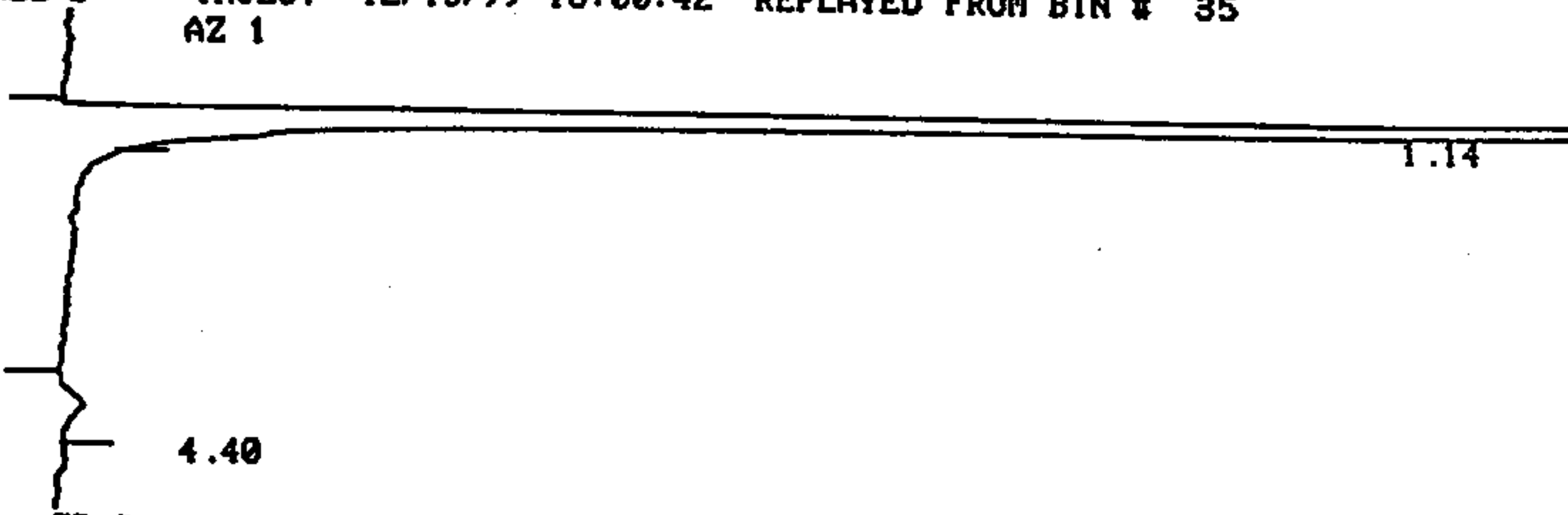
SAMPLE 1 AOC37-6 BIN 105 NAME ARUN0233

SA 300. IS 0. XF 0.

NAME	UG/L	RT	AREA BC	RF
TOLUENE	0.364	1.69	2953 01	27.079
TOTALS	0.364		2953	

CHANNEL B

INJECT 12/15/99 16:00:42 REPLAYED FROM BIN # 35  
AZ 1



1.14

4.40



DATA SAVED TO BIN # 35

CSSA 12/15/99 16:00:42 CH= "B" PS= 1.  
FILE 1. METHOD 5. RUN 231 INDEX 1 BIN 35

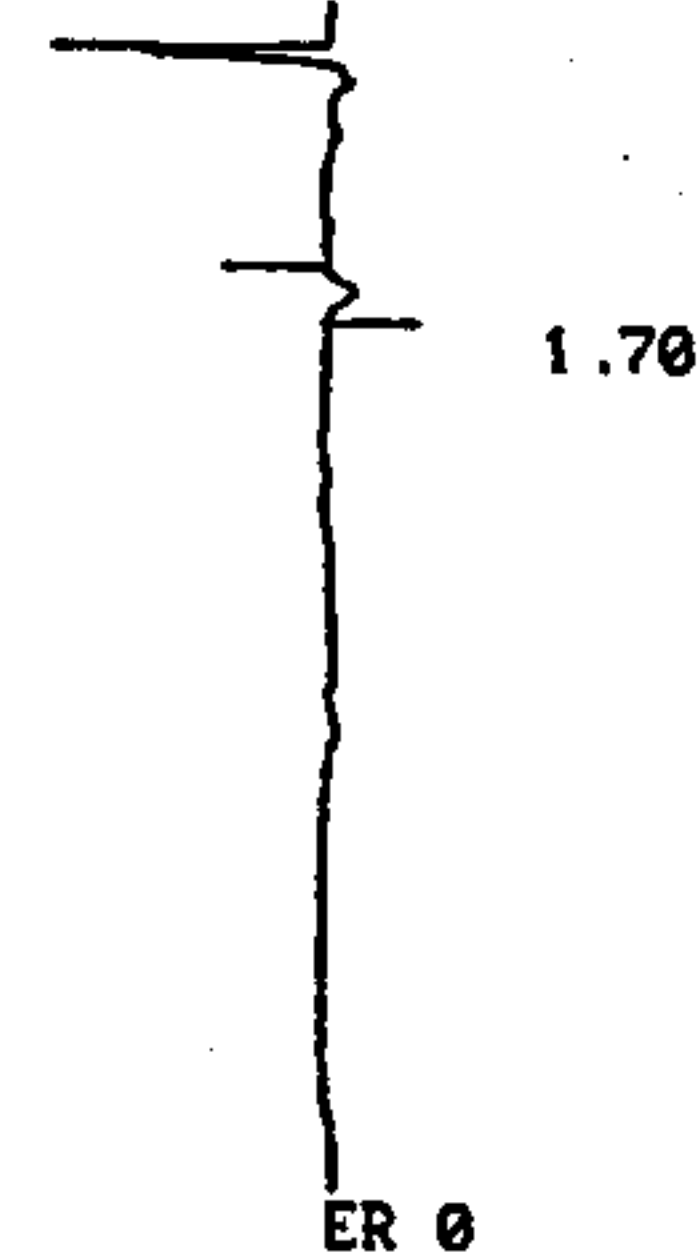
ANALYST: RODDY

SAMPLE 1 AOC37-6 BIN 35 NAME BRUN0227

SA 300. IS 0. XF 0.

NAME	UG/L	RT	AREA BC	RF
1	0.	1.14	1788470 01	
PCE	0.01	4.4	6988 01	2283.128
TOTALS	0.01		1795458	

CHANNEL A INJECT 12/15/99 16:09:24 STORED TO BIN # 106



DATA SAVED TO BIN # 106

CSSA 12/15/99 16:09:24 CH= "A" PS= 1.  
FILE 1. METHOD 5. RUN 244 INDEX 1 BIN 106

ANALYST: RODDY

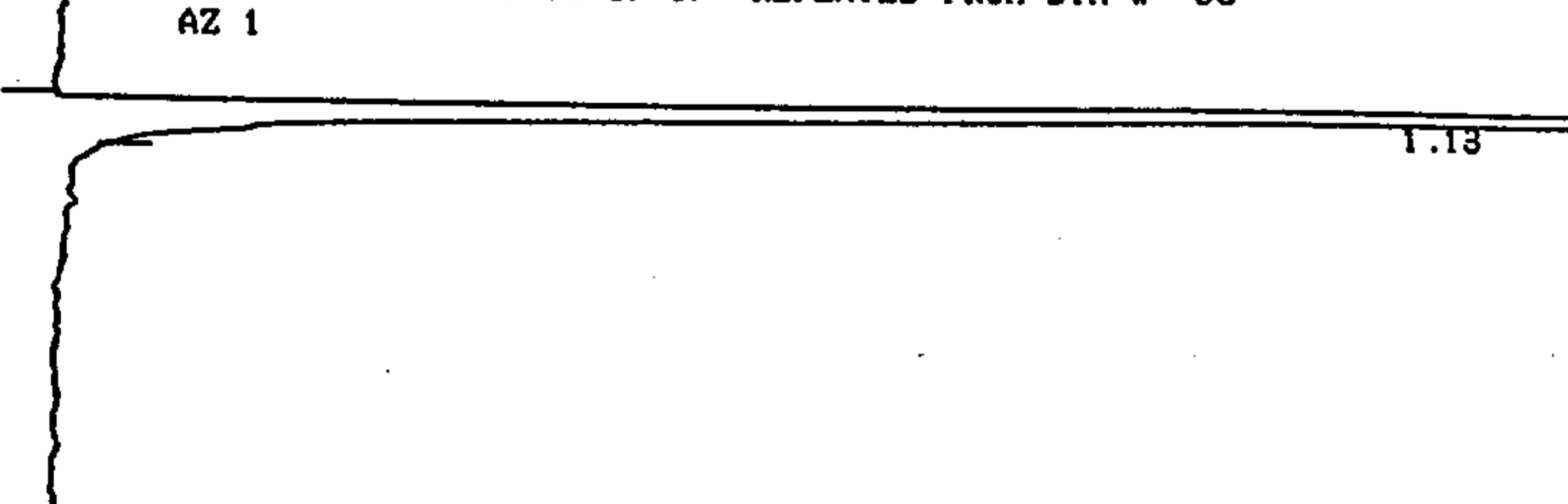
SAMPLE 1 AOC37-5 BIN 106 NAME ARUN0234

SA 300. IS 0. XF 0.

NAME	UG/L	RT	AREA BC	RF
------	------	----	---------	----

TOLUENE 0.309 1.7 2511 01 27.079  
 TOTALS 0.309 2511

CHANNEL B INJECT 12/15/99 16:09:39 REPLAYED FROM BIN # 36  
 AZ 1



ER 0  
 DATA SAVED TO BIN # 36

CSSA 12/15/99 16:09:39 CH= "B" PS= 1.  
 FILE 1. METHOD 5. RUN 232 INDEX 1 BIN 36

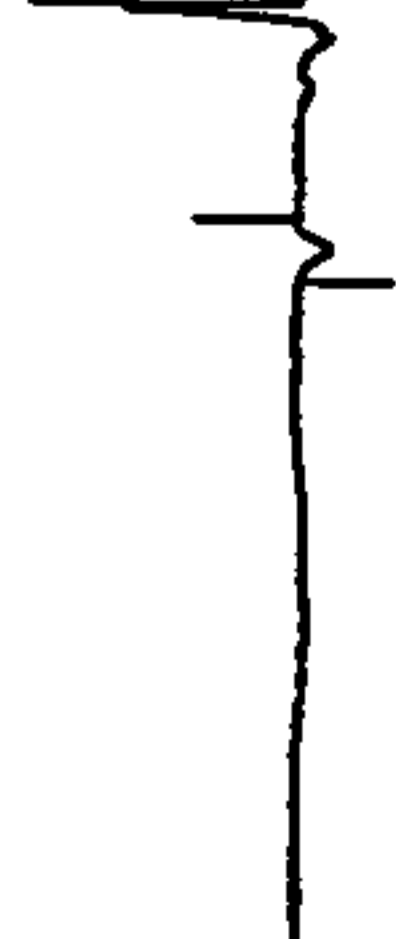
ANALYST: RODDY

SAMPLE 1 AOC37-5 BIN 36 NAME BRUN0228

SA 300. IS 0. XF 0.

NAME	UG/L	RT	AREA	BC	RF
1	0.	1.13	1353370	01	
TOTALS	0.		1353370		

CHANNEL A INJECT 12/15/99 16:18:27 STORED TO BIN # 107



1.70

CSSA 12/15/99 16:18:27 CH= "A" PS= 1.  
FILE 1. METHOD 5. RUN 245 INDEX 1 BIN 107

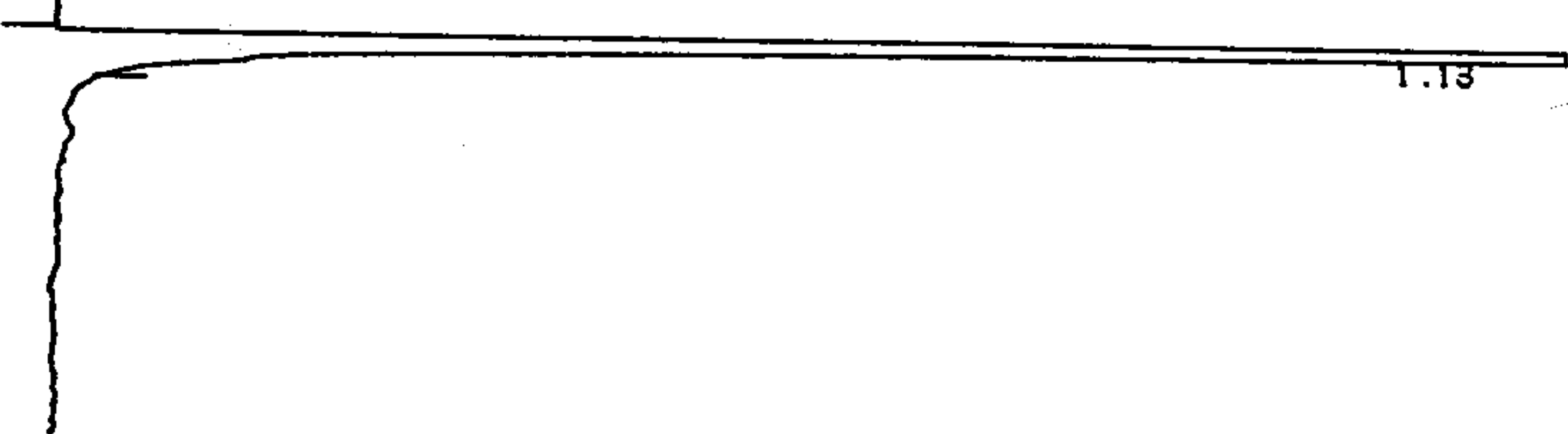
ANALYST: RODDY

SAMPLE 1 AOC41-38 BIN 107 NAME ARUN0235

SA 300. IS 0. XF 0.

NAME	UG/L	RT	AREA BC	RF
TOLUENE	0.346	1.7	2809 01	27.079
TOTALS	0.346		2809	

CHANNEL B INJECT 12/15/99 16:18:39 REPLAYED FROM BIN # 37  
AZ 1



ER 0  
DATA SAVED TO BIN # 37

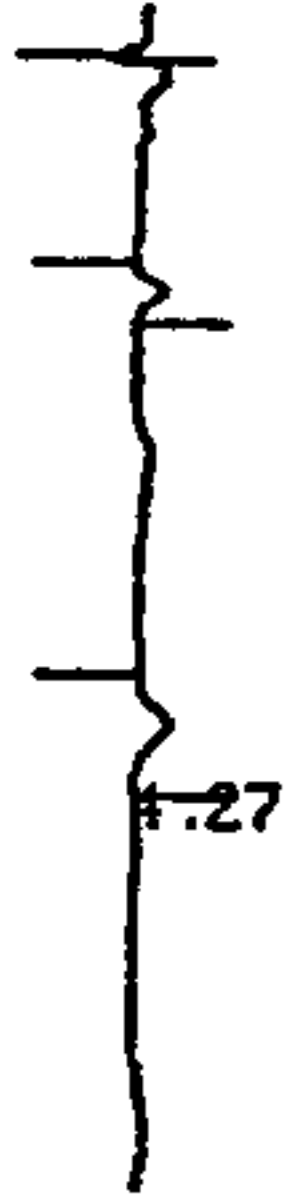
CSSA 12/15/99 16:18:39 CH= "B" PS= 1.  
FILE 1. METHOD 5. RUN 233 INDEX 1 BIN 37

ANALYST: RODDY

SAMPLE 1 AOC41-38 BIN 37 NAME BRUN0229

SA 300. IS 0. XF 0.

NAME	UG/L	RT	AREA BC	RF
1	0.	1.13	1442651 01	
TOTALS	0.		1442651	



1.70

4.27

ER 0

DATA SAVED TO BIN # 108

CSSA 12/15/99 16:27:54 CH= "A" PS= 1.

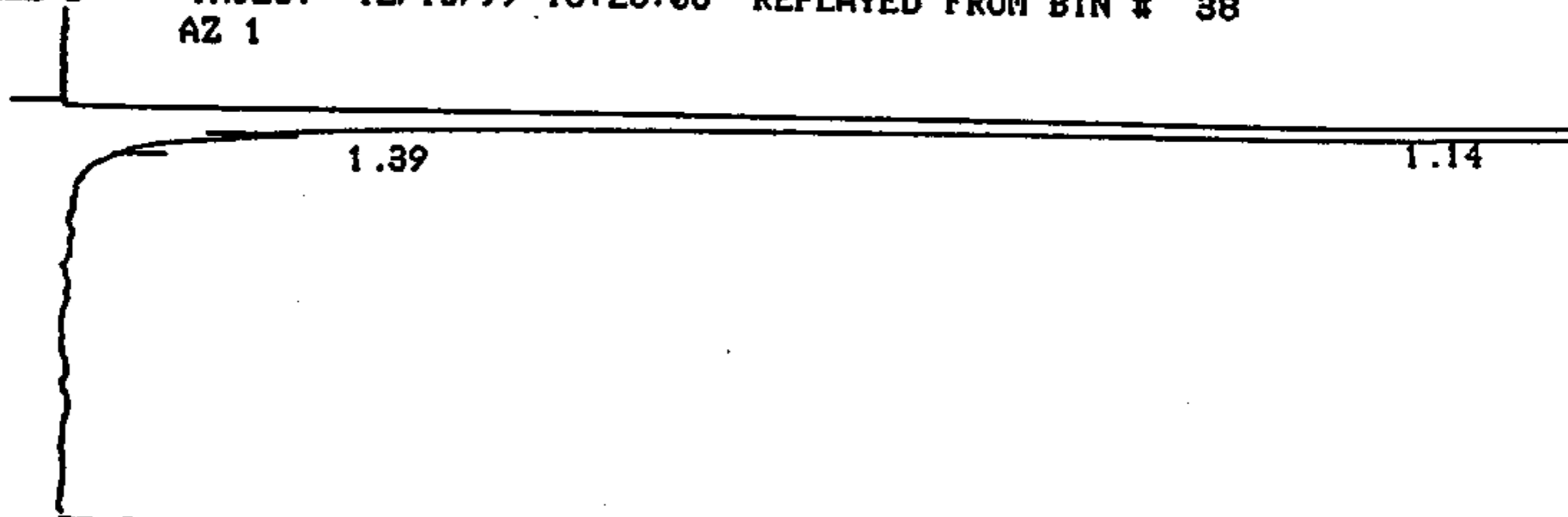
FILE 1. METHOD 5. RUN 246 INDEX 1 BIN 108

ANALYST: RODDY

SAMPLE 1 AOC41-37 BIN 108 NAME ARUN0236

SA 300. IS 0. XF 0.

NAME	UG/L	RT	AREA BC	RF
TOLUENE	0.298	1.7	2420 01	27.079
<del>O-XYLENE</del>	<del>0.95</del>	<del>4.27</del>	<del>4697 01</del>	<del>16.471</del>
TOTALS	1.248	W/0 →	7117	



1.39

1.14

ER 0

DATA SAVED TO BIN # 38

CSSA 12/15/99 16:28:06 CH= "B" PS= 1.  
FILE 1. METHOD 5. RUN 234 INDEX 1 BIN 38

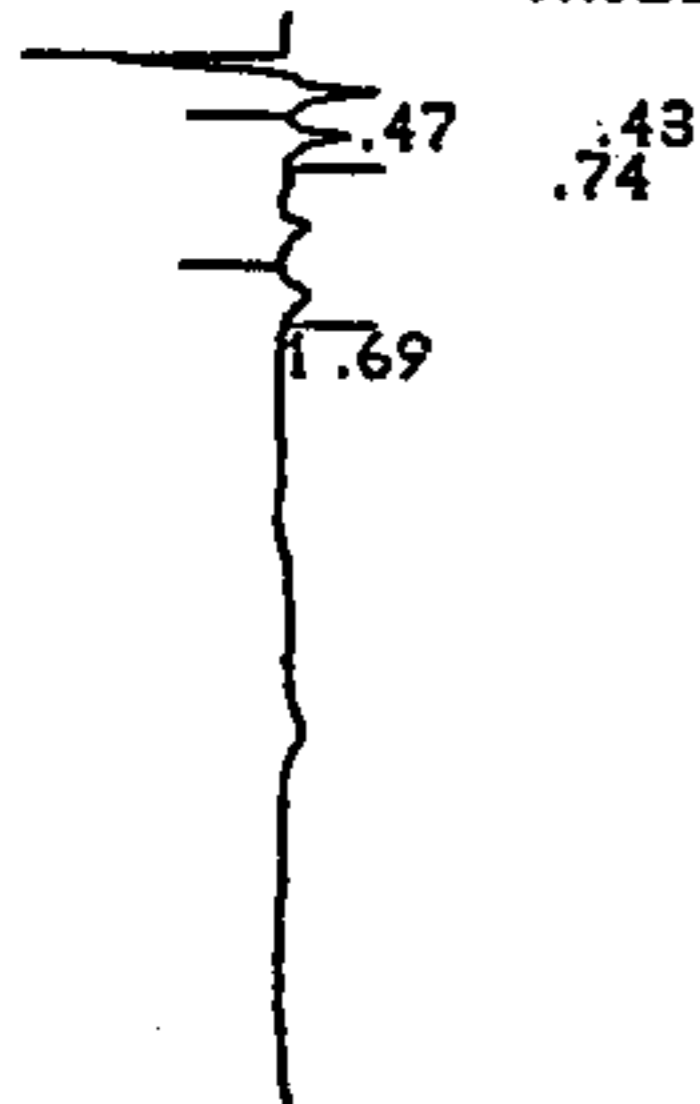
ANALYST: RODDY

SAMPLE 1 AOC41-37 BIN 38 NAME BRUN0230

SA 300. IS 0. XF 0.

NAME	UG/L	RT	AREA BC	RF
1	0.	1.14	1819692 08	
2	0.	1.39	123 05	
TOTALS	0.		1819815	

CHANNEL A INJECT 12/15/99 16:36:35 STORED TO BIN # 109



DATA SAVED TO BIN # 109

CSSA 12/15/99 16:36:35 CH= "A" PS= 1.  
FILE 1. METHOD 5. RUN 247 INDEX 1 BIN 109

ANALYST: RODDY

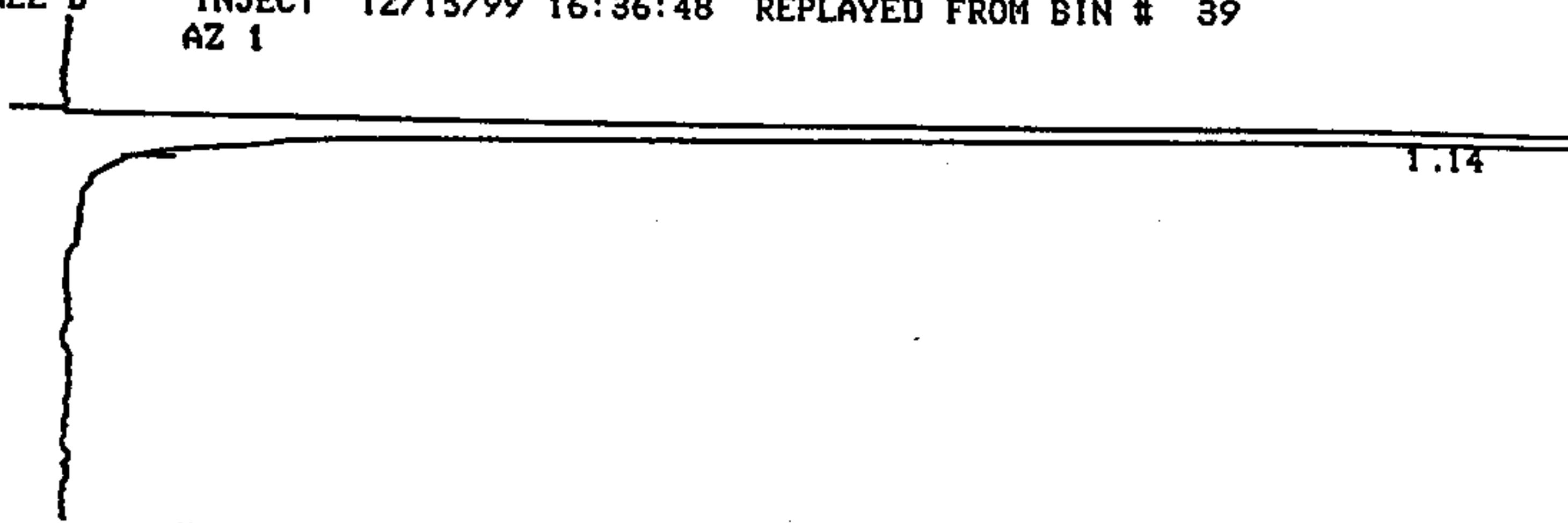
SAMPLE 1 AOC41-40 BIN 109 NAME ARUN0237

SA 300. IS 0. XF 0.

NAME	UG/L	RT	AREA BC	RF
1	0.	0.43	9122 02	

2	1105000.	0.47	17369	02	
CISDCE	2.144	0.74	11018	03	17.132
TOLUENE	Peak 0.294	1.69	2393	01	27.079
TOTALS	2.438		39902		

CHANNEL B INJECT 12/15/99 16:36:48 REPLAYED FROM BIN # 39  
AZ 1



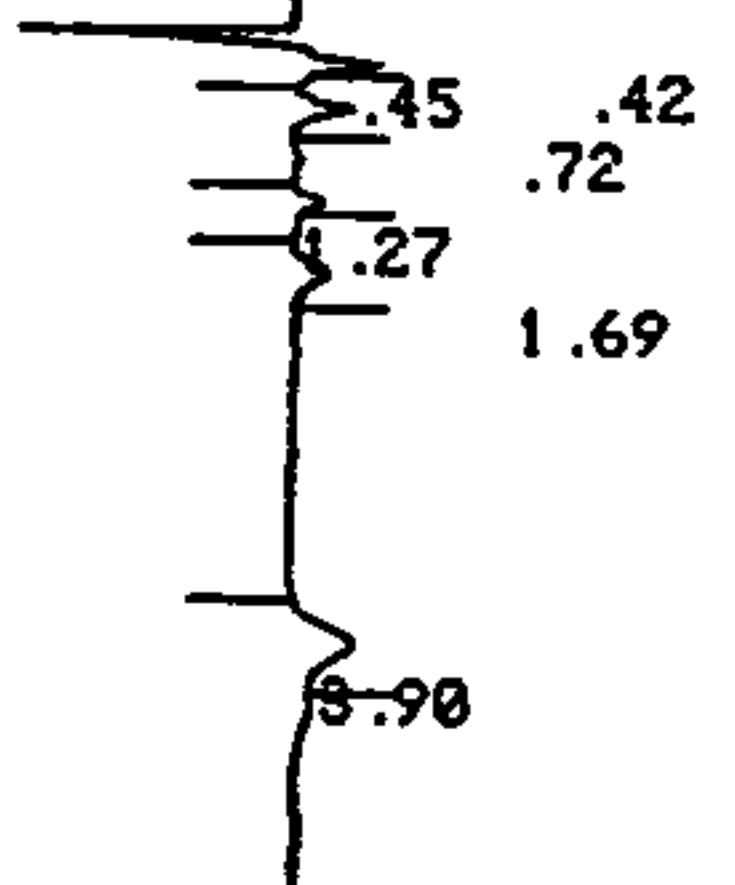
ER 0  
DATA SAVED TO BIN # 39

CSSA 12/15/99 16:36:48 CH= "B" PS= 1.  
FILE 1. METHOD 5. RUN 235 INDEX 1 BIN 39  
ANALYST: RODDY

SAMPLE 1 AOC41-40 BIN 39 NAME BRUN0231  
SA 300. IS 0. XF 0.

NAME	UG/L	RT	AREA BC	RF
1	0.	1.14	1509089 01	
TOTALS	0.		1509089	

CHANNEL A INJECT 12/15/99 16:44:41 STORED TO BIN # 110



ER 0

DATA SAVED TO BIN # 110.

CSSA 12/15/99 16:44:41 CH= "A" PS= 1.  
FILE 1. METHOD 5. RUN 248 INDEX 1 BIN 110

ANALYST: RODDY

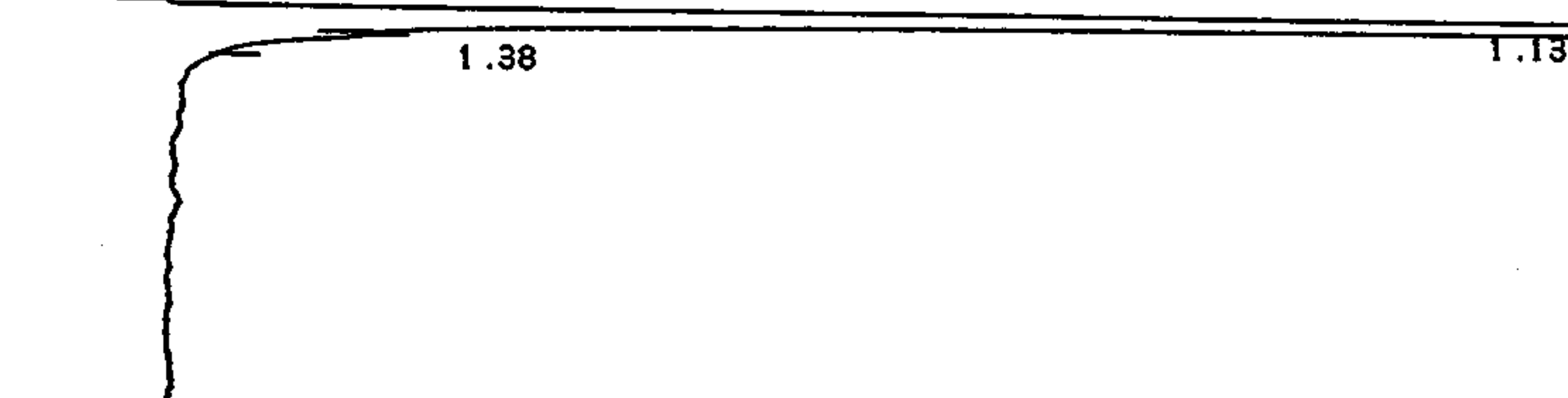
SAMPLE 1 AOC41-36 BIN 110 NAME ARUN0238

SA 300. IS 0. XF 0.

NAME	UG/L	RT	AREA BC	RF
1	0.	0.42	6712 02	
2	0.	0.45	5648 03	
<del>CISDGE</del>	0.525	0.72	2698 01	17.132
4	0.	1.27	1288 01	
TOLUENE	0.382	1.69	3103 01	27.079
M/P-XYLENE	1.057	3.9	7366 01	23.228
TOTALS	1.964		26815	

*no confirm peak on ECD*

CHANNEL B INJECT 12/15/99 16:44:55 REPLAYED FROM BIN # 40  
AZ 1



ER 0  
DATA SAVED TO BIN # 40

CSSA 12/15/99 16:44:55 CH= "B" PS= 1.  
FILE 1. METHOD 5. RUN 236 INDEX 1 BIN 40

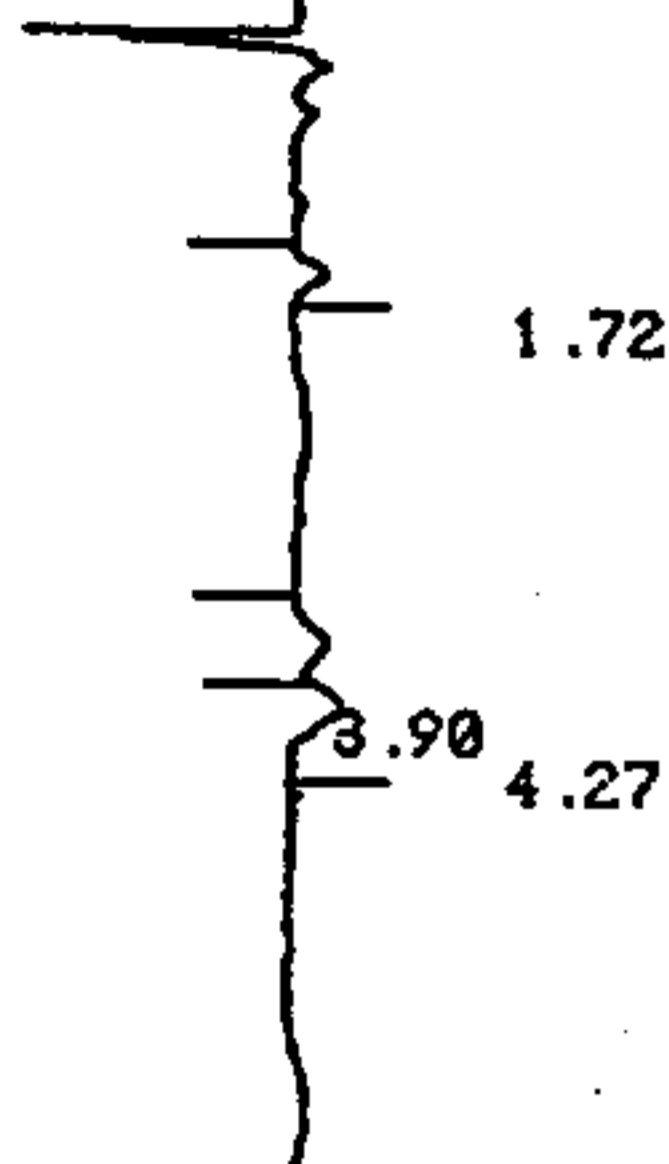
ANALYST: RODDY

SAMPLE 1 AOC41-36 BIN 40 NAME BRUN0232

SA 300. IS 0. XF 0.

NAME	UG/L	RT	AREA BC	RF
1	0.	1.13	1482319 08	
2	0.	1.38	124 05	
TOTALS	0.		1482443	

CHANNEL A INJECT 12/15/99 16:54:12 STORED TO BIN # 111



DATA SAVED TO BIN # 111

CSSA 12/15/99 16:54:12 CH= "A" PS= 1.  
 FILE 1. METHOD 5. RUN 249 INDEX 1 BIN 111

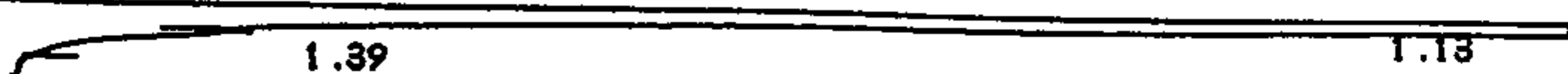
ANALYST: RODDY

SAMPLE 1 AOC41-39 BIN 111 NAME ARUN0239

SA 300. IS 0. XF 0.

NAME	UG/L	RT	AREA BC	RF
TOLUENE	0.391	1.72	3178 01	27.079
<del>M/P-XYLENE</del> NO	0.777	3.9	5410 02	23.228
<del>O-XYLENE</del> NO	1.473	4.27	7279 03	16.471
TOTALS	2.641		15867	

CHANNEL B INJECT 12/15/99 16:54:24 REPLAYED FROM BIN # 41  
 AZ 1





ER 0

DATA SAVED TO BIN # 41

CSSA 12/15/99 16:54:24 CH= "B" PS= 1.  
FILE 1. METHOD 5. RUN 237 INDEX 1 BIN 41

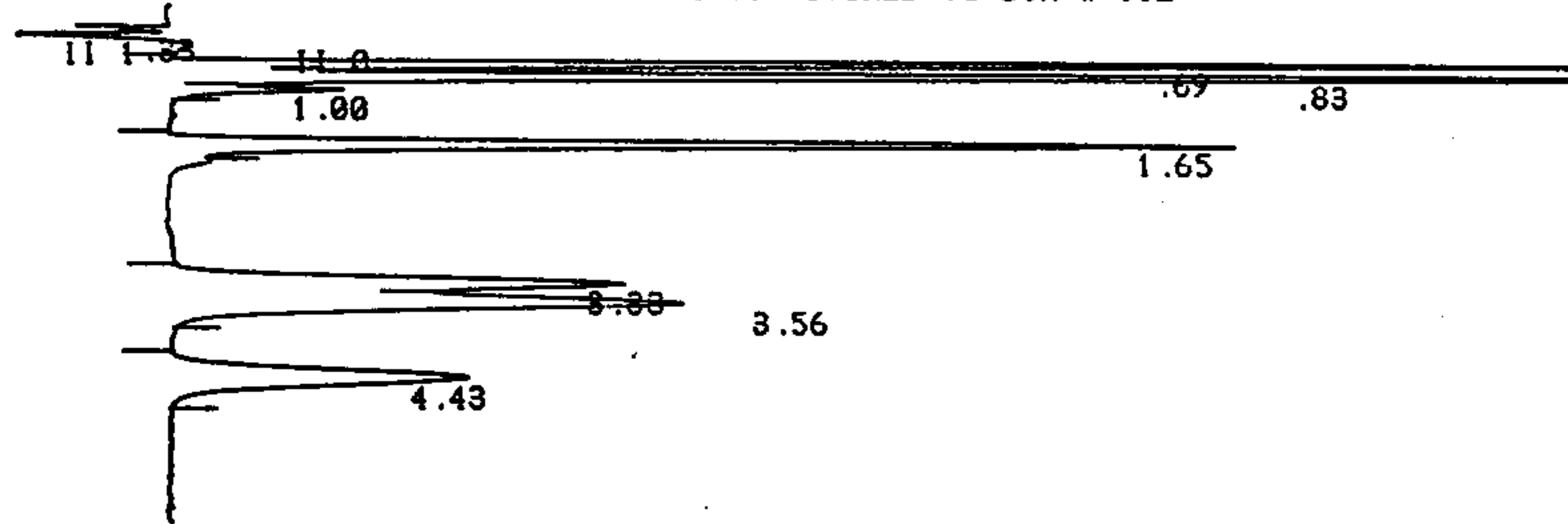
ANALYST: RODDY

SAMPLE 1 AOC41-39 BIN 41 NAME BRUN0233

SA 300. IS 0. XF 0.

NAME	UG/L	RT	AREA	BC	RF
1	0.	1.13	1420108	08	
2	0.	1.39	234	05	
TOTALS	0.		1420342		

CHANNEL A INJECT 12/15/99 17:03:16 STORED TO BIN # 112



DATA SAVED TO BIN # 112

CSSA 12/15/99 17:03:16 CH= "A" PS= 1.  
FILE 1. METHOD 5. RUN 250 INDEX 1 BIN 112

ANALYST: RODDY

SAMPLE 1 STD -39 BIN 112 NAME ARUN0240

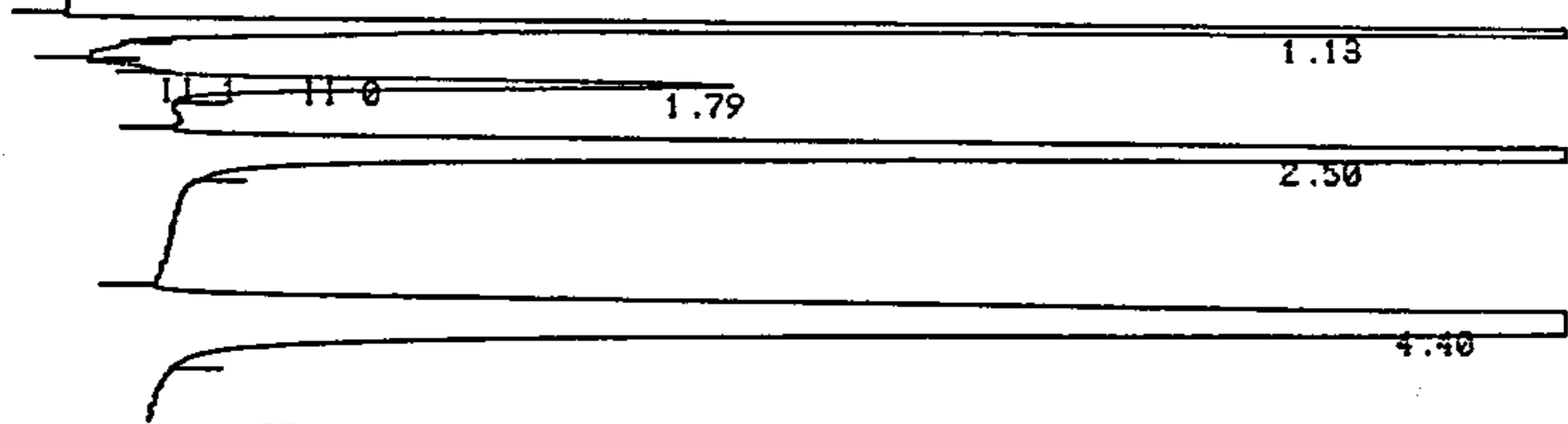
SA IS XF

100. 0. 0.

NAME	UG/L	RT	AREA BC	RF
1	0.	0.33	4350 01	
CISDCE	73.298	0.69	125572 02	17.132
BENZENE	50.944	0.83	176778 02	34.7
TCE	8.74	1.	15627 03	17.88
TOLUENE	45.81	1.65	124045 01	27.079
EBENZENE	48.969	3.33	93395 02	19.072
M/P-XYLENE	50.911	3.56	118255 03	23.228
O-XYLENE	51.061	4.43	84104 01	16.471
TOTALS	329.733		742126	

CHANNEL B INJECT 12/15/99 17:03:29 REPLAYED FROM BIN # 42  
AZ 1

CHANNEL B INJECT 12/15/99 17:11:15 STORED TO BIN # 42



ER 0

DATA SAVED TO BIN # 42

CSSA 12/15/99 17:11:15 CH= "B" PS= 1.

FILE 1. METHOD 5. RUN 238 INDEX 1 BIN 42

ANALYST: RODDY

SAMPLE 1 STD -39 BIN 42 NAME BRUN0234

SA 100.00 IS 0. XF 0.

NAME	UG/L	RT	AREA BC	RF
1	0.	1.13	375954 01	
CISDCE	67.964	1.79	78552 01	11.558
TCE	8.053	2.5	503858 01	625.705
PCE	3.821	4.4	872589 01	2283.128
TOTALS	79.838		1830953	

SAMPLE TABLE...

ANALYST (RODDY) AN=""

INJECTIONS/SAMPLE [0-254] ( r. ) RA=

SAMPLES BETWEEN CALIB [0-254] ( '0. ) CI=

CONC UNITS (UG/L ) CU=""

SAM IX NAME SAM AMT SCALE

SI= 1 SN="" SA= 90 XF=

SI=

END OF DIALOG

CSSA 12/15/99 17:11:15 CH= "B" PS= 1.

FILE 1. METHOD 5. RUN 239 INDEX 1 BIN 42

ANALYST: RODDY

SAMPLE 1 STD -39 BIN 42 NAME BRUN0235

SA 90. IS 0. XF 0.

NAME	UG/L	RT	AREA BC	RF
1	0.	1.13	375954 01	
CISDCE	75.515	1.79	78552 01	11.558
TCE	8.948	2.5	503858 01	625.705
PCE	4.246	4.4	872589 01	2283.128
TOTALS	88.709		1830953	

PLOT "A" AUTO

1.66



ER 0

DATA SAVED TO BIN # 113

CSSA 12/15/99 17:18:10 CH= "A" PS= 1.

FILE 1. METHOD 5. RUN 251 INDEX 1 BIN 113

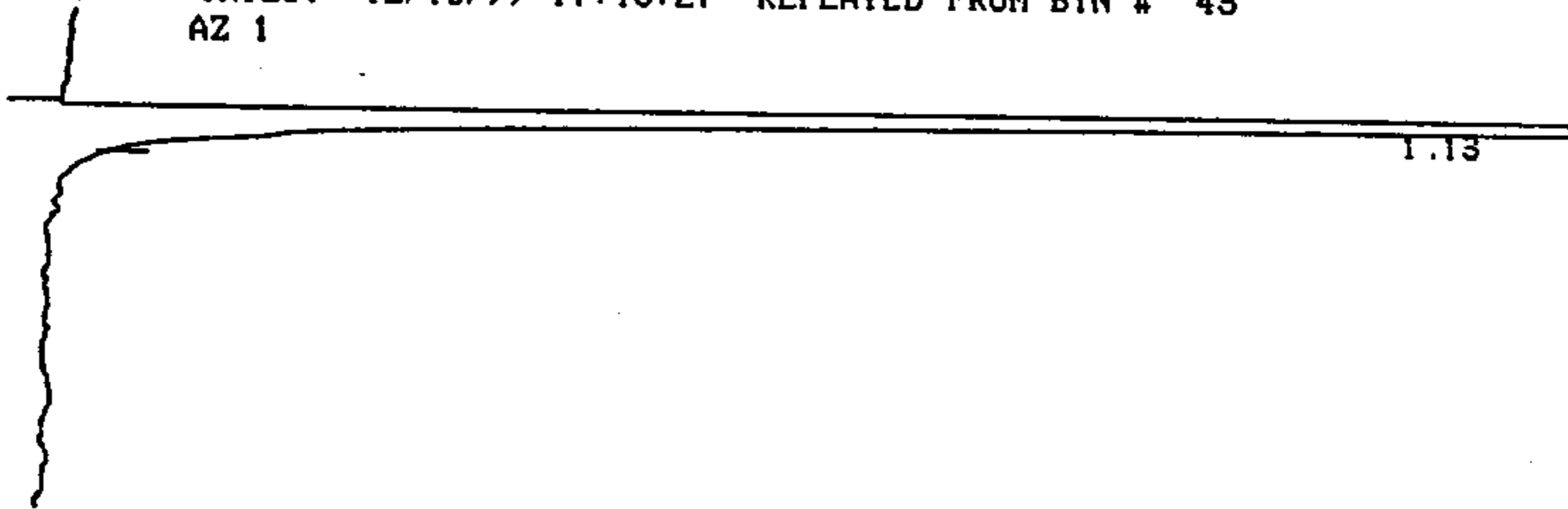
ANALYST: RODDY

SAMPLE 1 SYSBLK BIN 113 NAME ARUN0241

SA 300. IS 0. XF 0.

NAME	UG/L	RT	AREA BC	RF
TOLUENE	0.598	1.66	4854 01	27.079
TOTALS	0.598		4854	

CHANNEL B INJECT 12/15/99 17:18:27 REPLAYED FROM BIN # 43  
AZ 1



ER 0

DATA SAVED TO BIN # 43

CSSA 12/15/99 17:18:27 CH= "B" PS= 1.

FILE 1. METHOD 5. RUN 240 INDEX 1 BIN 43

ANALYST: RODDY

SAMPLE 1 SYSBLK BIN 43 NAME BRUN0235

SA 300. IS 0. XF 0.

NAME	UG/L	RT	AREA BC	RF
1	0.	1.13	1536671 01	
TOTALS	0.		1536671	

1.65

ER 0

DATA SAVED TO BIN # 114

CSSA 12/15/99 17:26:59 CH= "A" PS= 1.  
FILE 1. METHOD 5. RUN 252 INDEX 1 BIN 114

ANALYST: RODDY

SAMPLE 1 AOC37-4f BIN 114 NAME ARUN0242  
SA 300. IS 0. XF 0.

NAME	UG/L	RT	AREA BC	RF
TOLUENE	0.452	1.65	3672 01	27.079
TOTALS	0.452		3672	

1.14

ER 0

DATA SAVED TO BIN # 44

CSSA 12/15/99 17:27:11 CH= "B" PS= 1.

FILE 1. METHOD 5. RUN 241 INDEX 1 BIN 44

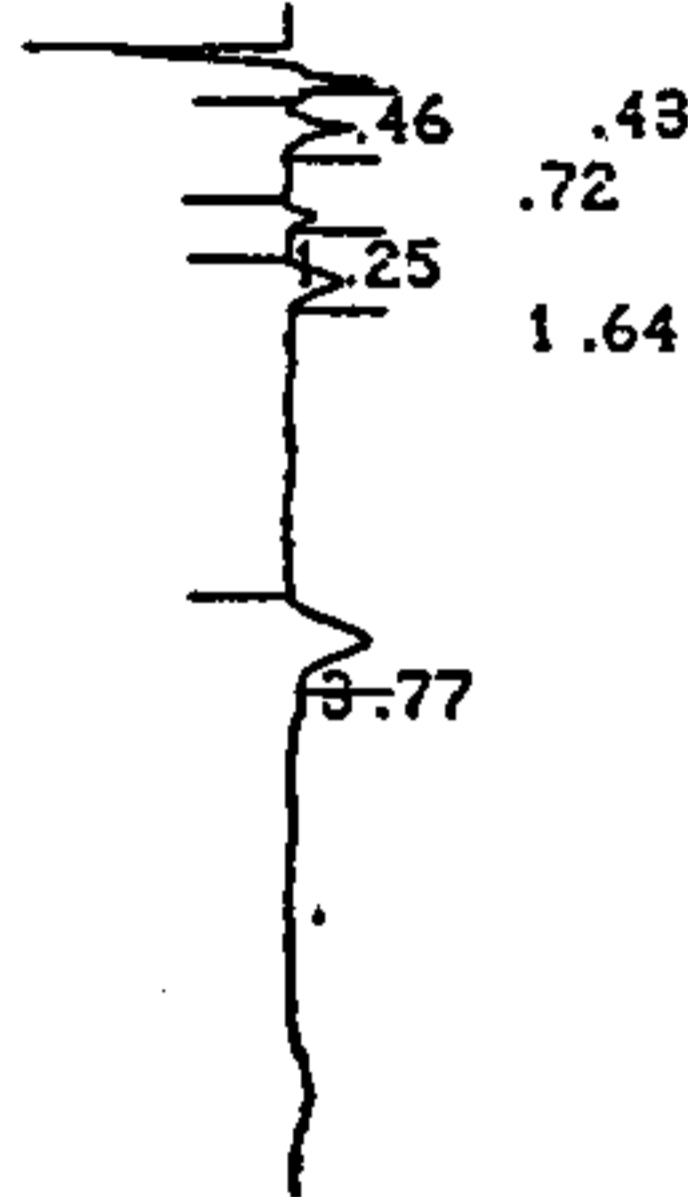
ANALYST: RODDY

SAMPLE 1 AOC37-41 BIN 44 NAME BRUN0236

SA 300. IS 0. XF 0.

NAME	UG/L	RT	AREA	BC	RF
1	0.	1.14	1555132	01	
TOTALS	0.		1555132		

CHANNEL A INJECT 12/15/99 17:37:09 STORED TO BIN # 115



ER 0

DATA SAVED TO BIN # 115

CSSA 12/15/99 17:37:09 CH= "A" PS= 1.

FILE 1. METHOD 5. RUN 253 INDEX 1 BIN 115

ANALYST: RODDY

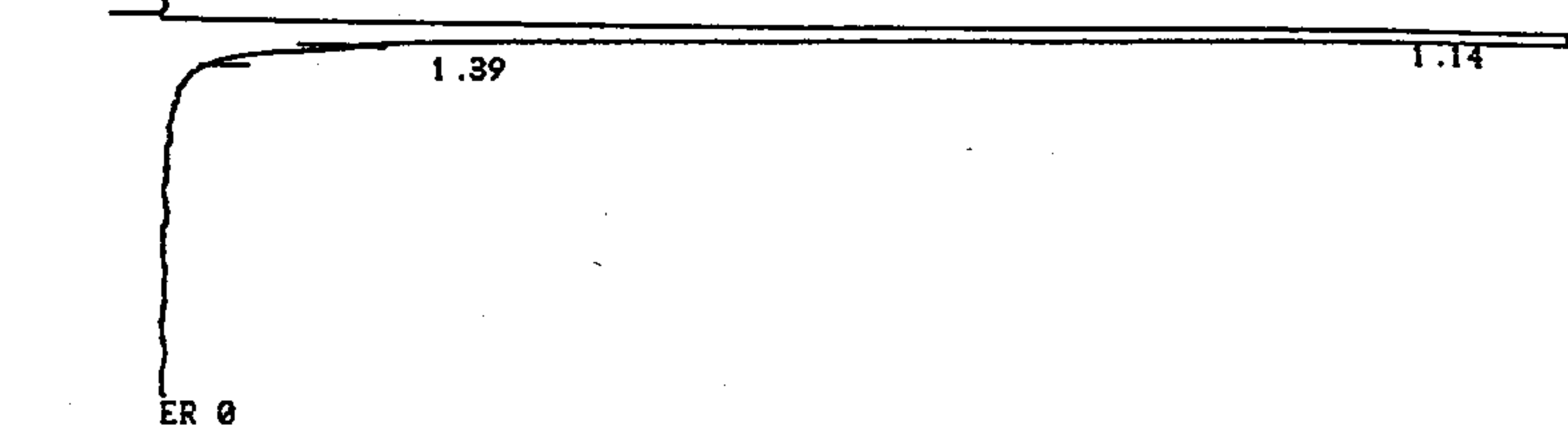
SAMPLE 1 AOC41-36D BIN 115 NAME ARUN0243

SA 300. IS 0. XF 0.

NAME	UG/L	RT	AREA	BC	RF
------	------	----	------	----	----

1	0.	0.43	6039	02	
2	0.	0.46	5397	03	
<del>CISDCE</del>	0.543	0.72	2789	01	17.132
4	0.	1.25	1428	01	
TOLUENE	0.559	1.64	4542	01	27.079
M/P-XYLENE   U.D	1.431	3.97	9972	01	23.228
TOTALS	2.533		30167		

CHANNEL B INJECT 12/15/99 17:37:23 REPLAYED FROM BIN # 45  
AZ 1



ER 0  
DATA SAVED TO BIN # 45

CSSA 12/15/99 17:37:23 CH= "B" PS= 1.  
FILE 1. METHOD 5. RUN 242 INDEX 1 BIN 45

ANALYST: RODDY

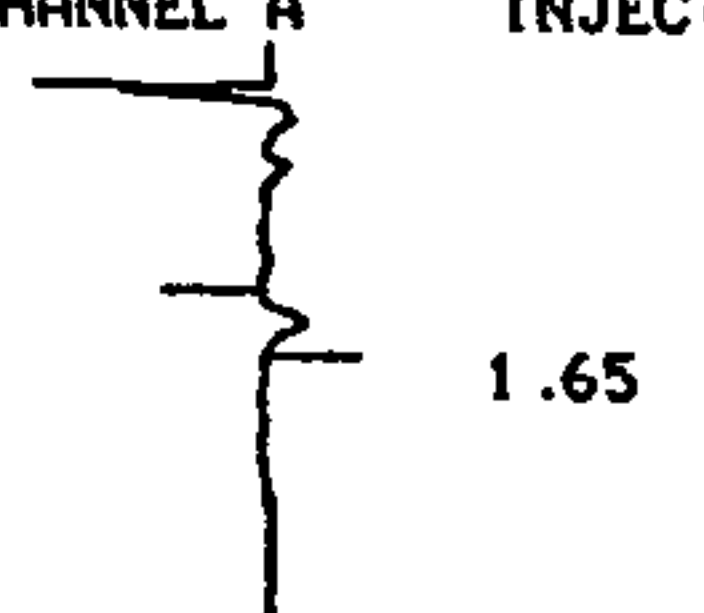
SAMPLE 1 AOC41-36 BIN 45 NAME BRUN0237

SA 300. IS 0. XF 0.

NAME	UG/L	RT	AREA	BC	RF
1	0.	1.14	1515822	08	
2	0.	1.39	86	05	
TOTALS	0.		1515908		

INK LOW - CHANGE PRINT CARTRIDGE AND PRESS [CTRL-SHIFT-C]

CHANNEL A INJECT 12/15/99 17:46:02 STORED TO BIN # 116



3.76

ER 0

DATA SAVED TO BIN # 116

CSSA 12/15/99 17:46:02 CH= "A" PS= 1.  
FILE 1. METHOD 5. RUN 254 INDEX 1 BIN 116

ANALYST: RODDY

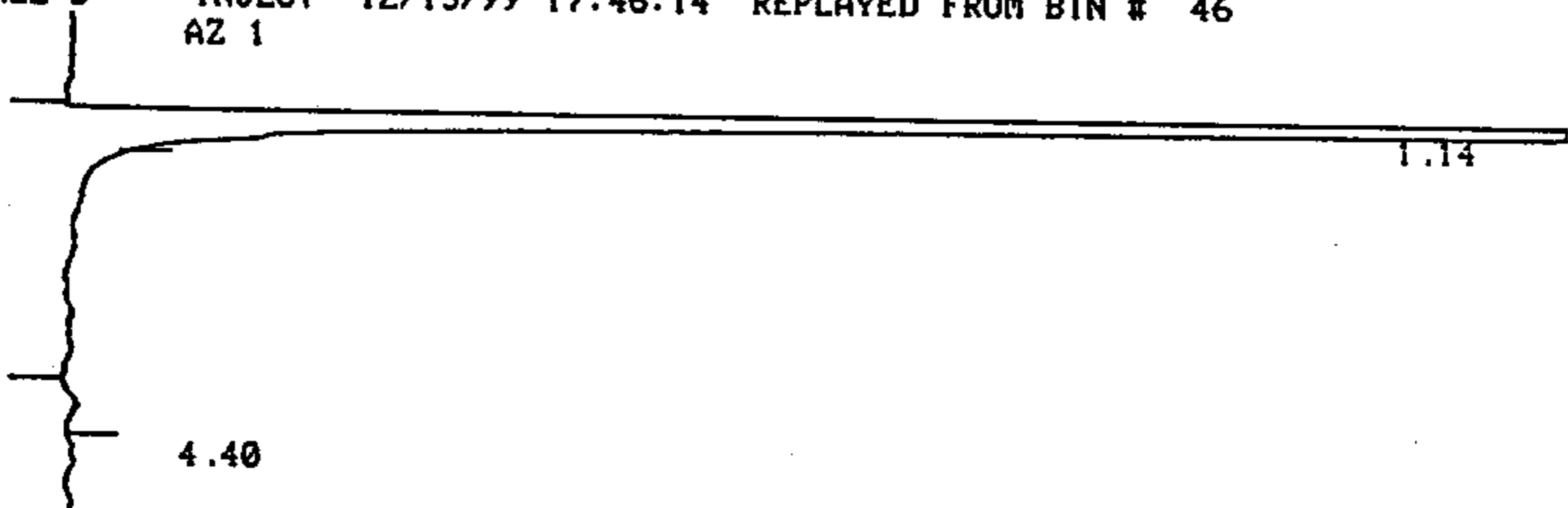
SAMPLE 1 AOC66-77D BIN 116 NAME ARUN0244

SA 300. IS 0. XF 0.

NAME	UG/L	RT	AREA BC	RF
TOLUENE	0.496	1.65	4028 01	27.079
<del>M/P-XYLENE</del>	0.626	3.76	4363 01	23.228
TOTALS	1.122		8391	

INK LOW - CHANGE PRINT CARTRIDGE AND PRESS [CTRL-SHIFT-C]

CHANNEL B INJECT 12/15/99 17:46:14 REPLAYED FROM BIN # 46  
AZ 1



ER 0

DATA SAVED TO BIN # 46

CSSA 12/15/99 17:46:14 CH= "B" PS= 1.  
FILE 1. METHOD 5. RUN 243 INDEX 1 BIN 46

ANALYST: RODDY

SAMPLE 1 AOC66-77D BIN 46 NAME BRUN0238

SA IS XF



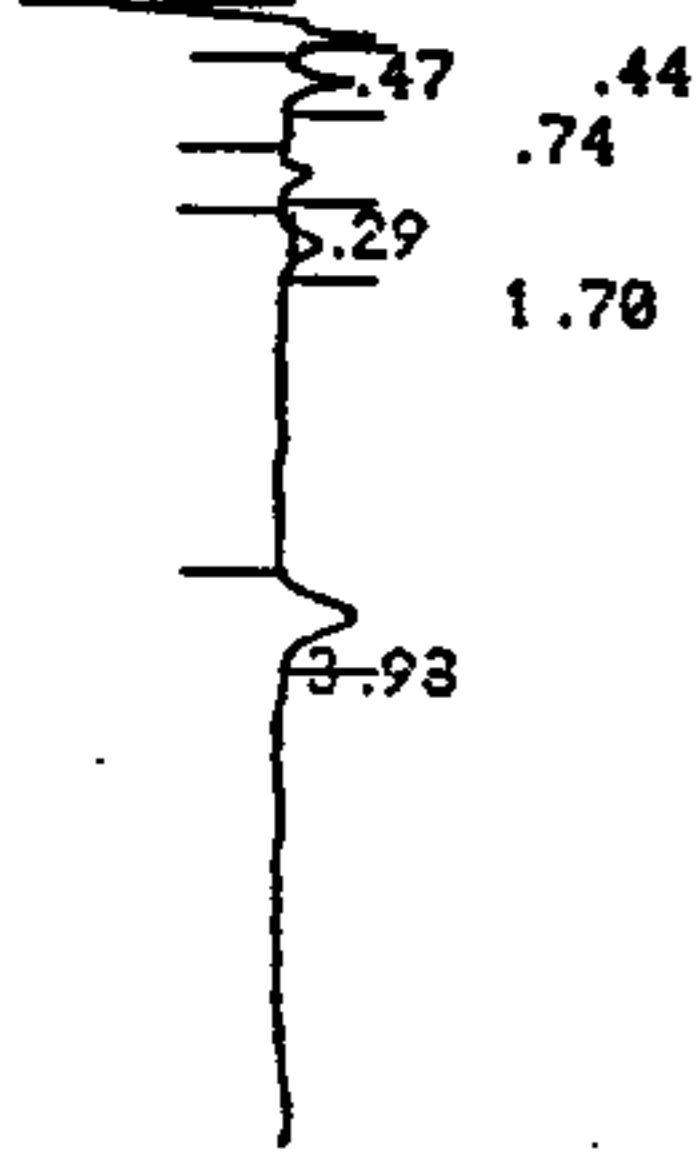
300.

0.

0.

NAME	UG/L	RT	AREA	BC	RF
I	0.	1.14	1915537	01	
PCE	0.004	4.4	2711	01	2283.128
TOTALS	0.004		1918248		

INK LOW - CHANGE PRINT CARTRIDGE AND PRESS [CTRL-SHIFT-C]



ER 0

DATA SAVED TO BIN # 117

CSSA 12/15/99 18:04:06 CH= "A" PS= 1.  
 FILE 1. METHOD 5. RUN 255 INDEX 1 BIN 117

ANALYST: RODDY

SAMPLE 1 AOC41-39 BIN 117 NAME ARUN0245

SA 300. IS 0. XF 0.

NAME	UG/L	RT	AREA	BC	RF
1	0.	0.44	6840	02	
2	0.	0.47	5570	03	
<del>CISDC</del> <i>no certis part</i>	0.56	0.74	2880	01	17.132
4	0.	1.29	1604	01	
TOLUENE	0.438	1.7	3557	01	27.079
<del>M/P XYLENE</del>	1.55	3.93 <i>wrong</i>	10801	01	23.228
TOTALS	2.548		31252		

INK LOW - CHANGE PRINT CARTRIDGE AND PRESS [CTRL-SHIFT-C]

AZ 1

1.11

ER 0

DATA SAVED TO BIN # 47

CSSA 12/15/99 18:04:20 CH= "B" PS= 1.

FILE 1. METHOD 5. RUN 244 INDEX 1 BIN 47

ANALYST: RODDY

SAMPLE 1 AOC41-39 BIN 47 NAME BRUN0239

SA 300. IS 0. XF 0.

NAME UG/L RT AREA BC RF

1 0. 1.11 1489026 01

TOTALS 0. 1489026

INK LOW - CHANGE PRINT CARTRIDGE AND PRESS [CTRL-SHIFT-C]