

**RFI AND INTERIM MEASURES**  
**WASTE MANAGEMENT PLAN ADDENDUM**  
**AT**  
**CAMP STANLEY STORAGE ACTIVITY**  
**BOERNE, TEXAS**  
**Addendum Specific to SWMU B-4**

A waste management investigation will be performed to remove previously excavated soils and media located at SWMU B-4 (Figure 1). Procedures are described in the *Work Plan and Sampling and Analysis Plan Addendum, SWMU B-4*, August, 2011. Background information on this site can be found in the CSSA Environmental Encyclopedia, Volume 3-1.

In accordance with the TPDES General Permit No. TXR150000, erosion control features are required and are detailed in the *Storm Water Prevention Plan (SWPP) for SWMU B-4, August 2011*.

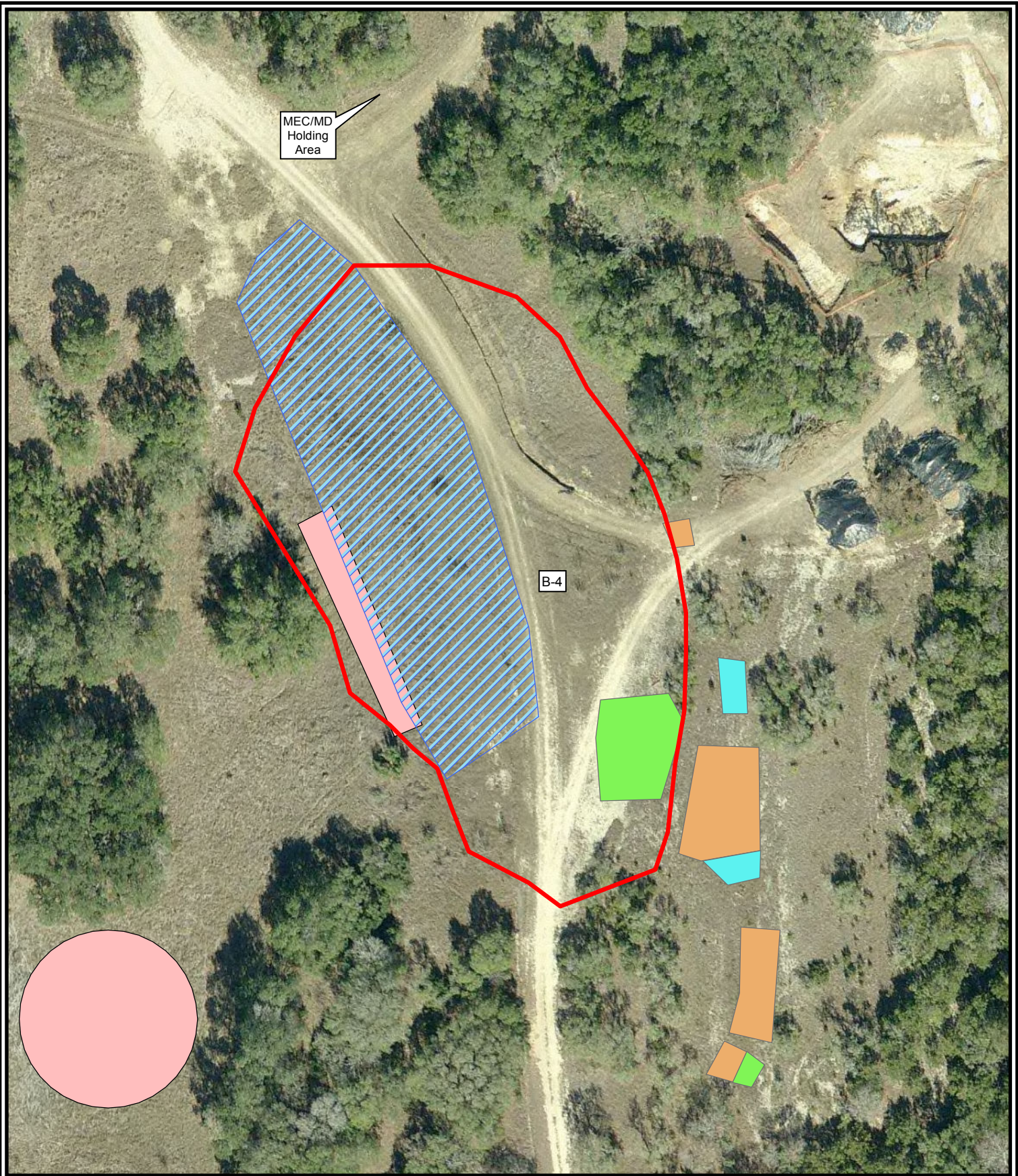
Previously excavated soil media is stockpiled onsite and will be sorted and/or sifted to remove foreign debris and certified free of munitions and explosives of concern Material Potentially Presenting an Explosive Hazard (MPPEH). These stockpile areas are delineated based on field screening assessments, analytical data results, or material contained therein. As a precaution, field activities will be supervised by UXO technicians to provide UXO identification and avoidance for the workers and equipment performing the investigation and to address safety issues associated with ordnance material.

Once certified free of MPPEH, all impacted soil media that meets non-hazardous criteria, and CSSA standards for berm reuse, will be transported to the East Pasture berm. Parsons will coordinate the transportation of the soils to the East Pasture berm with CSSA personnel.

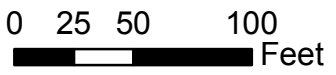
CSSA will utilize the Area of Contamination concept in managing and treatment of contaminated media or waste. Treatment efforts will include the stabilization of hazardous inorganic impacted media (i.e. with use of Apatite II, etc.) within the defined area of contamination, thus rendering the media non-hazardous before disposal or recycling. Additionally, management of remediation waste will follow USEPA guidance in a memorandum issued on October 14, 1998, *Management of Remediation Waste Under RCRA*, EPA 530-F-98-026.

All removal work will be performed in Level D personal protective equipment. The excavated material will be handled and disposed as determined by results of waste characterization testing.





- Gun and Gun Related Holding Area
- Metal Debris Piles
- Small Arms Ammunition Piles
- Soil/Metal Piles
- Staging Area
- Site Boundary



**Figure 1**  
**SWMU B-4**  
**Site Map**  
**Camp Stanley Storage Activity**  
**PARSONS**