

ATTACHMENT B

Slide Presentation

SWMU Investigations and Closures – Ecological Risk Assessment for North Pasture

Technical Interchange Meeting

September 2007

Camp Stanley Storage Activity
Boerne, TX

Agenda

- Introductions
- Objectives of Meeting
- Overview of SWMU's of Concern
- Ecological Risk Evaluation
- TRRP Tier 2 PCL Evaluation for Benzene at AOC-63

Objective of Meeting

- Ecological Risk Assessment
 - Provide background information
 - Present proposed approach for ecological risk assessment
 - Get input from USEPA and TCEQ
- Other Issues
 - Get input from USEPA and TCEQ on AOC 63 TRRP Tier 2 PCL evaluation

Overview of CSSA

- Location
 - Camp Stanley is a U.S. Army post situated on approximately 4,000 acres, located in Bexar County, 19 miles northwest of downtown San Antonio, Texas.
- Mission
 - Receipt, storage, and issuance of ordnance materiel as well as quality assurance testing and maintenance of military weapons and ammunition. Due to its mission, access to Camp Stanley is controlled.

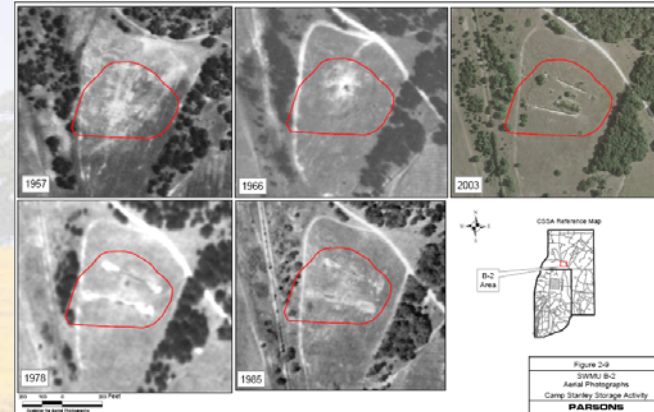


North Pasture APAR sites

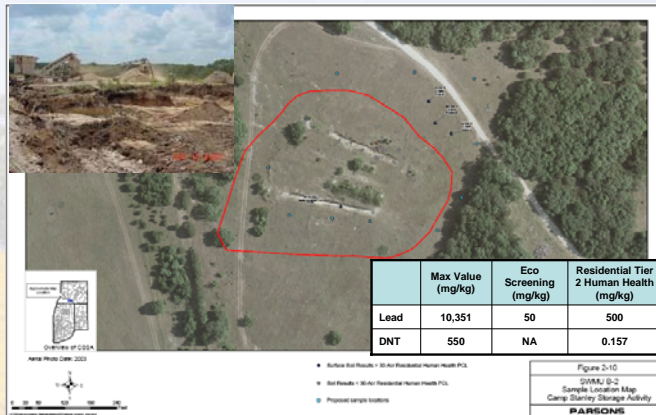
- APAR will include SWMU's B-2, B-8, B-20/21, and B-24
- Limited hot spot removal action planned
- Establish appropriate PCL's for residential closure



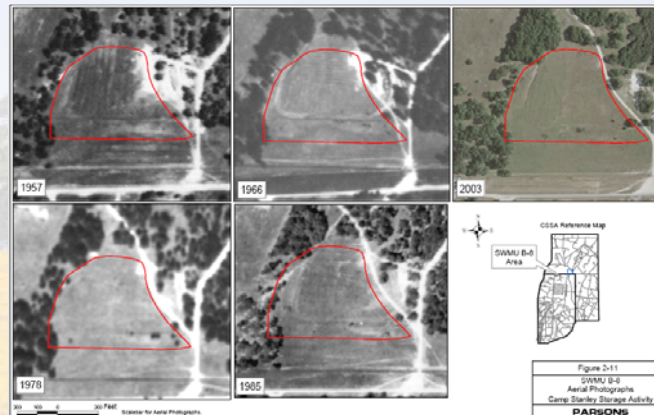
SWMU B-2 Historical Photo



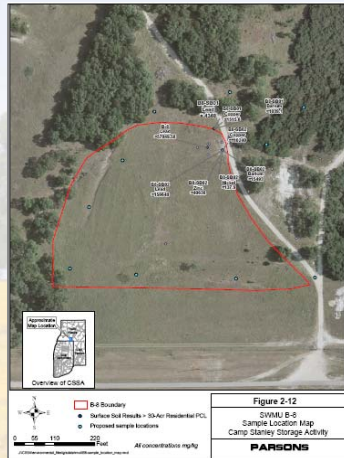
SWMU B-2 Investigation Results



SWMU B-8 Historical Photo



SWMU B-8 Investigation Results



	Max Value (mg/kg)	Eco Screening (mg/kg)	Residential Tier 2 Human Health (mg/kg)
Lead	156,640	50	500
Barium	15,493	500	5,143
Copper	1,515.6	61	547.6
Zinc	406.4	120	9,921.4

Figure 2-12
SWMU B-8
Sample Location Map
Camp Stanley Storage Activity
PARSONS

SWMU B-20/21 Historical Photo

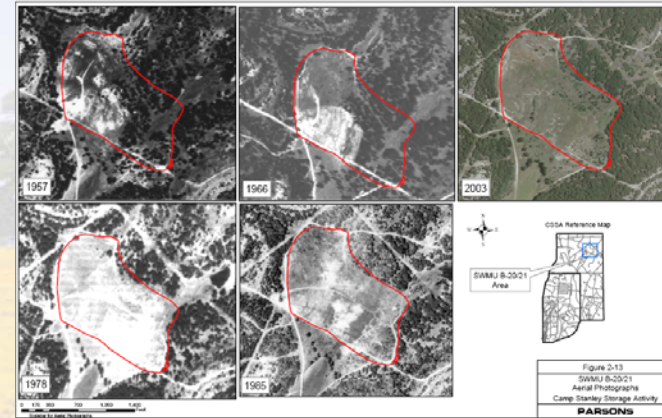
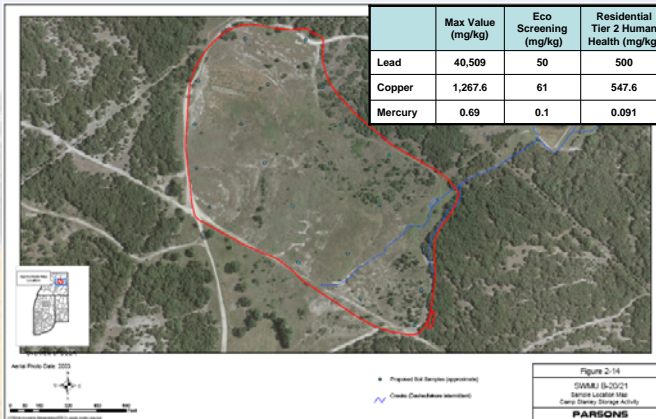


Figure 2-13
SWMU B-20/21
Aerial Photographs
Camp Stanley Storage Activity
PARSONS

SWMU B-20/21 Investigation Results



	Max Value (mg/kg)	Eco Screening (mg/kg)	Residential Tier 2 Human Health (mg/kg)
Lead	40,509	50	500
Copper	1,267.6	61	547.6
Mercury	0.69	0.1	0.091

Figure 2-14
SWMU B-20/21
Sample Location Map
Camp Stanley Storage Activity
PARSONS

SWMU B-24 Historical Photo

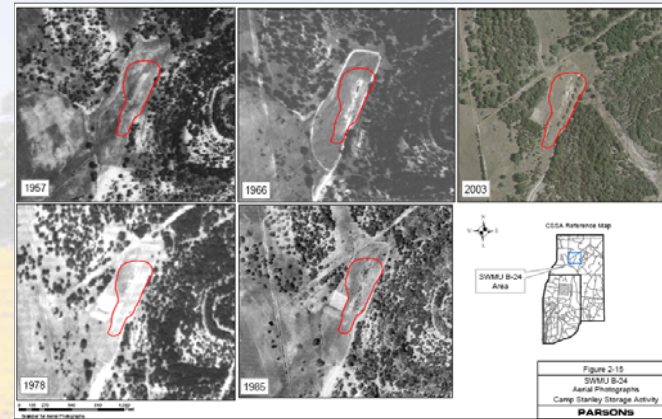


Figure 2-15
SWMU B-24
Aerial Photographs
Camp Stanley Storage Activity
PARSONS

SWMU B-24 Investigation Results



	Max Value (mg/kg)	Eco Screening (mg/kg)	Residential Tier 2 Human Health (mg/kg)
Lead	42.9	50	500
DNT	0.33	NA	0.157



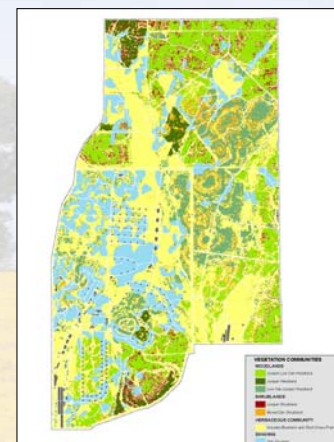
Ecological Risk Assessment Approach

- Physical Extent of ERA Area
- Conceptual Model
 - Habitat distribution
 - Key receptor species

Habitat

- Overall CSSA Habitat Composition
 - Oak-Juniper woodland
 - Mixed shrub land
 - Oak savanna
 - Herbaceous (Bluestem-dominant)
- North Pasture
 - Area predominantly woodland
 - Herbaceous cover in sites

Habitat



Habitat



Habitat

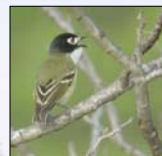
Acreage by Community

Community	Installation	North Pasture	% N.P
Woodland	1,646	771	47%
Shrublands	486	213	44%
Herbaceous	1,200	272	23%
Savanna	597	125	21%

Key Receptors

- Mammals

- White-footed mouse
- Short-tailed shrew
- Gray fox



Black capped vireo



Golden cheek warbler

- Birds

- America robin and bobwhite
- T&E: Black capped vireo and Golden cheek warbler
- Red-tailed Hawk

Detections and Habitat



Detections and Habitat



Questions?