

ATTACHMENT B

Slide Presentation

SWMU Investigations and Closures – Ecological Risk Assessment for North Pasture

A photograph of a large, two-story building with a red-tiled roof and a central tower, situated in a field of yellow flowers. The image is faded and serves as a background for the text.

Technical Interchange Meeting

September 2007

Camp Stanley Storage Activity
Boerne, TX

Agenda

- Introductions
- Objectives of Meeting
- Overview of SWMU's of Concern
- Ecological Risk Evaluation
- TRRP Tier 2 PCL Evaluation for Benzene at AOC-63

Objective of Meeting

- Ecological Risk Assessment
 - Provide background information
 - Present proposed approach for ecological risk assessment
 - Get input from USEPA and TCEQ
- Other Issues
 - Get input from USEPA and TCEQ on AOC 63 TRRP Tier 2 PCL evaluation

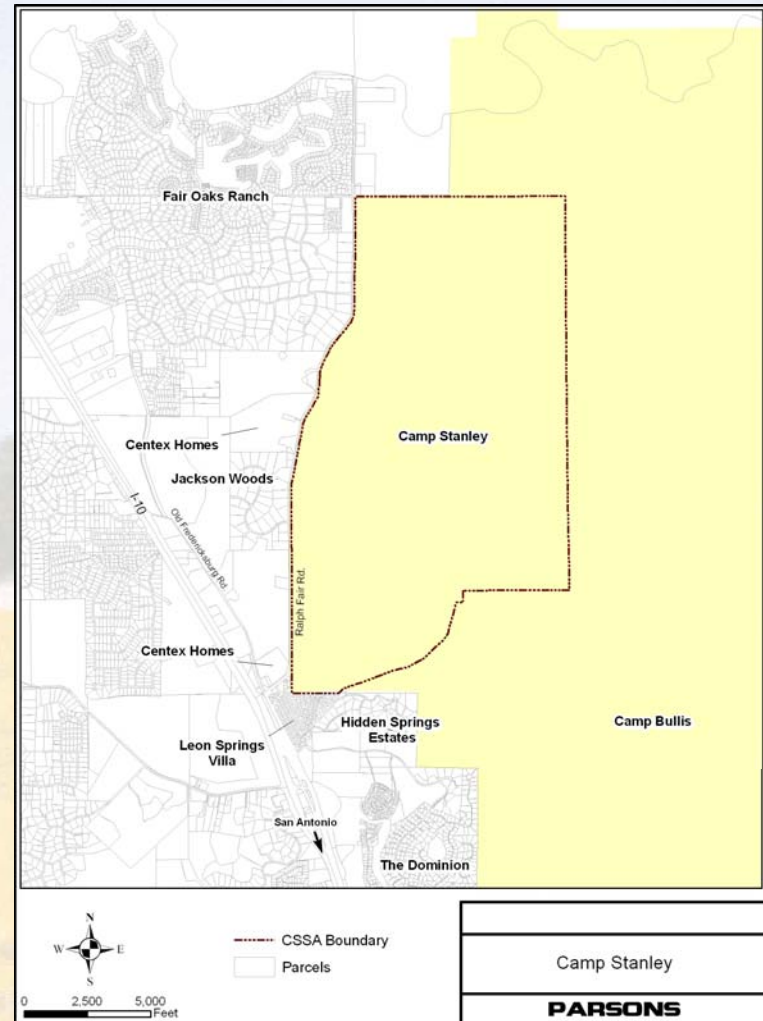
Overview of CSSA

- Location

- Camp Stanley is a U.S. Army post situated on approximately 4,000 acres, located in Bexar County, 19 miles northwest of downtown San Antonio, Texas.

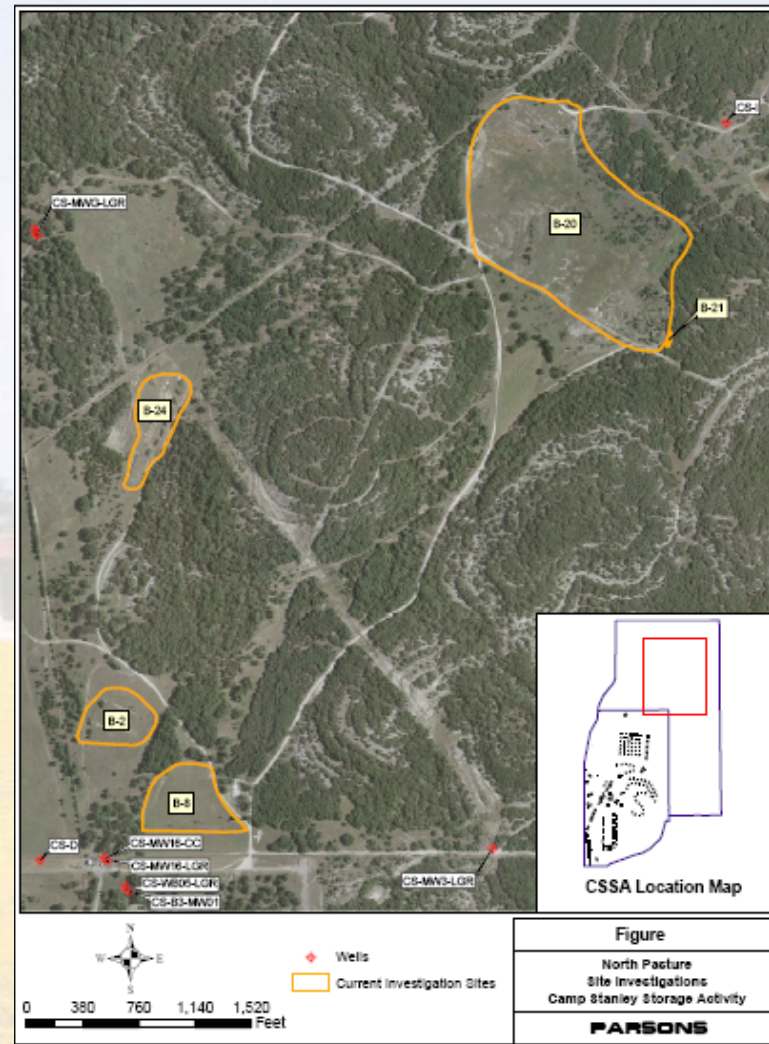
- Mission

- Receipt, storage, and issuance of ordnance materiel as well as quality assurance testing and maintenance of military weapons and ammunition. Due to its mission, access to Camp Stanley is controlled.

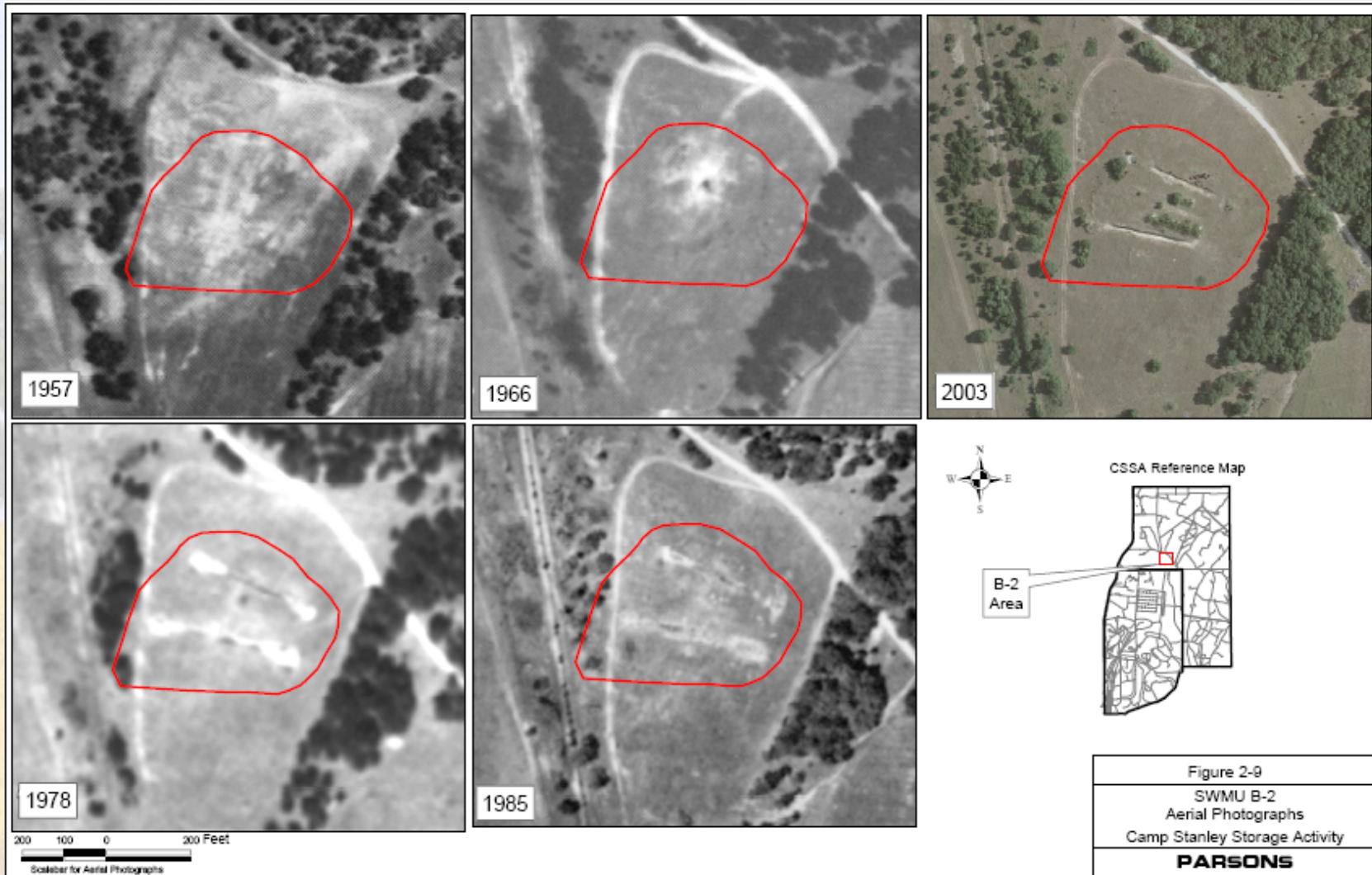


North Pasture APAR sites

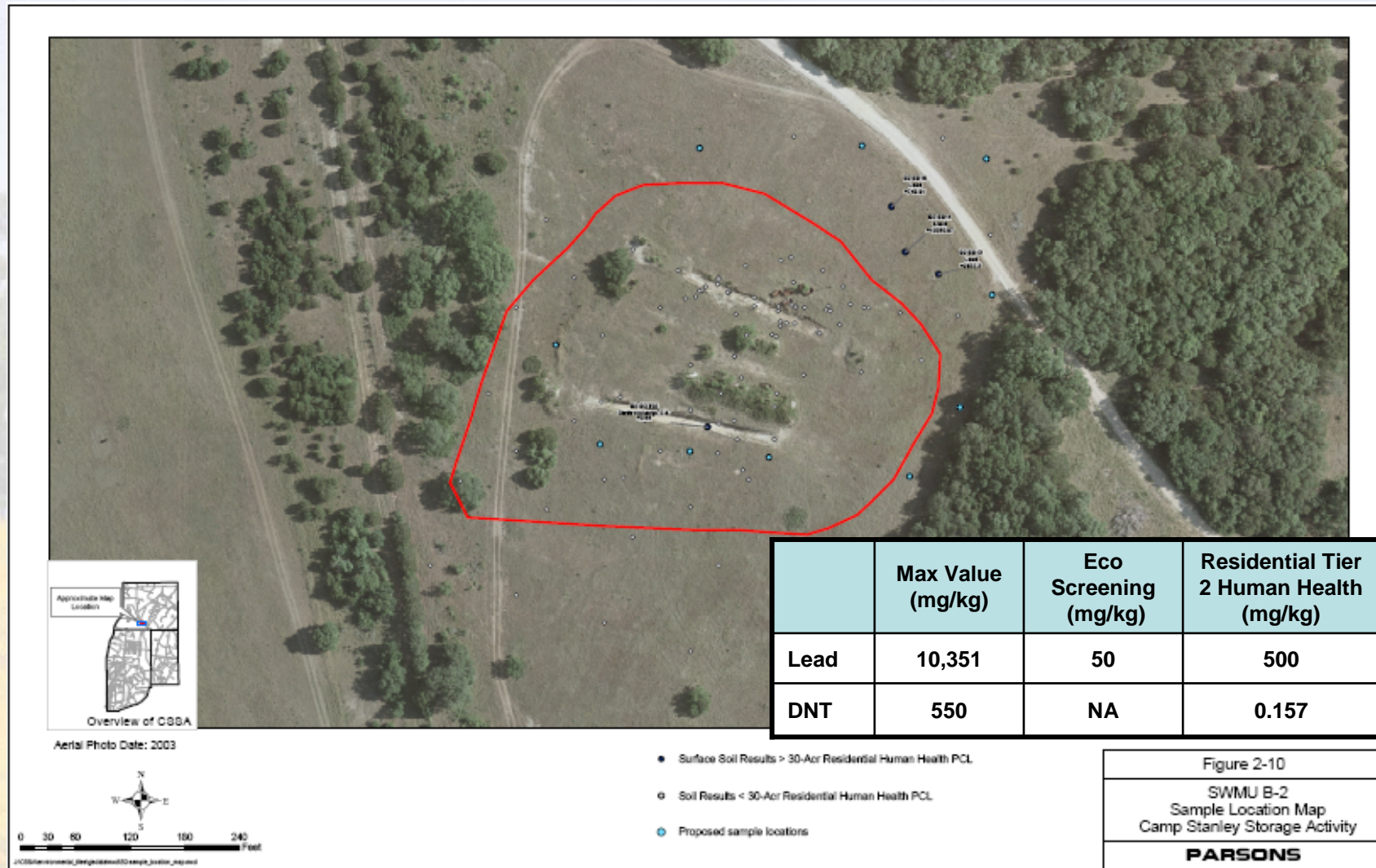
- APAR will include SWMU's B-2, B-8, B-20/21, and B-24
- Limited hot spot removal action planned
- Establish appropriate PCL's for residential closure



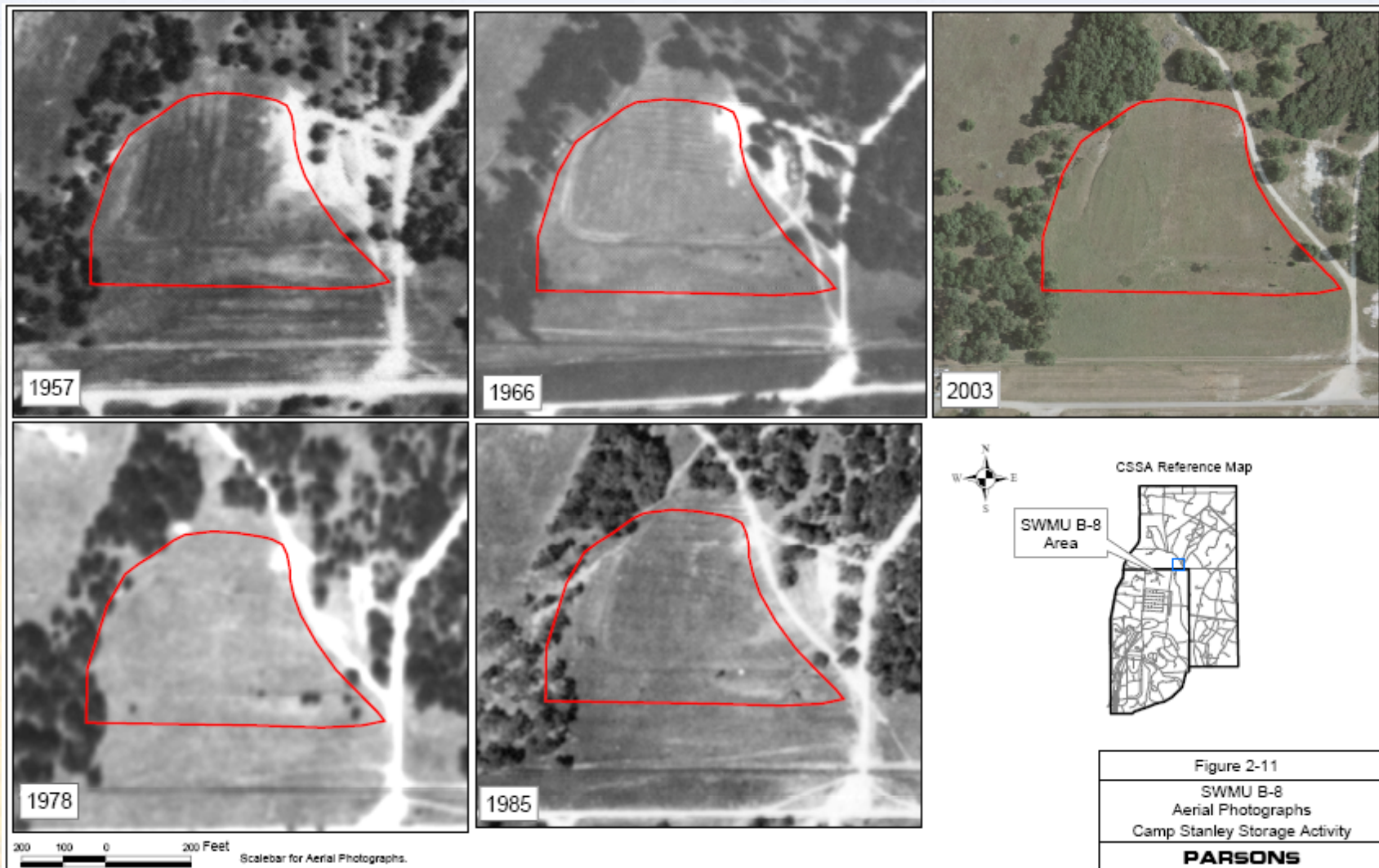
SWMU B-2 Historical Photo



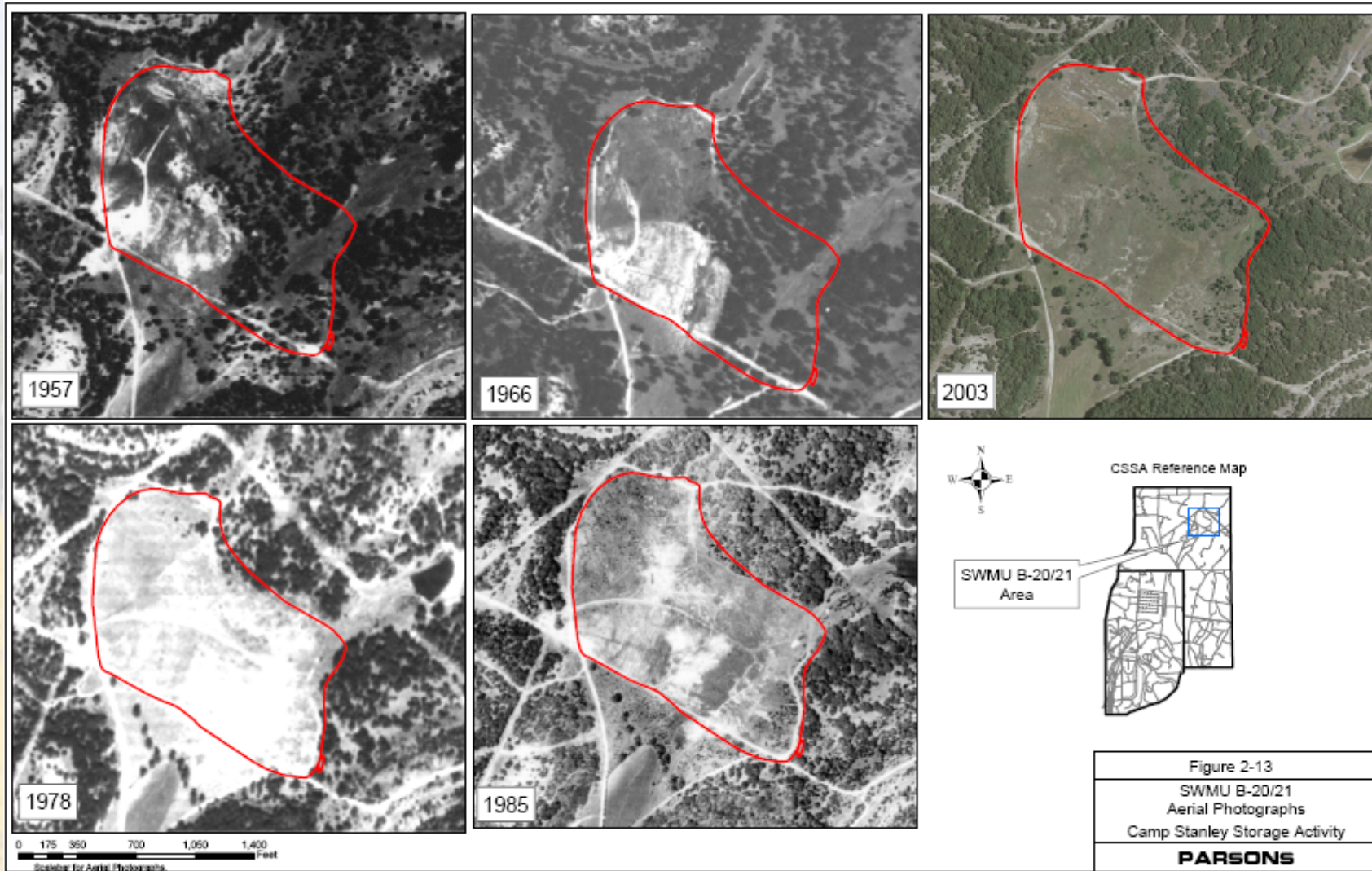
SWMU B-2 Investigation Results



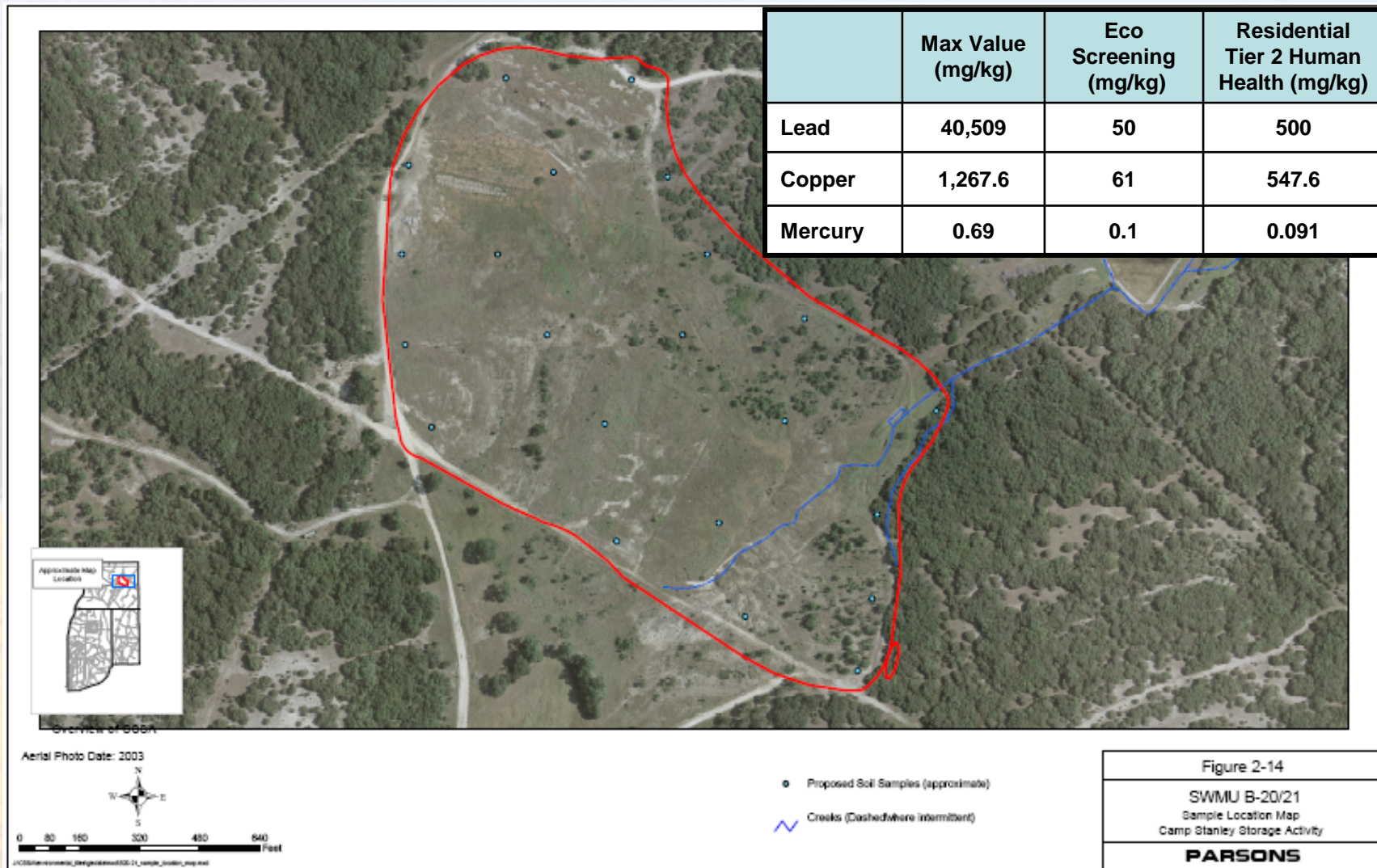
SWMU B-8 Historical Photo



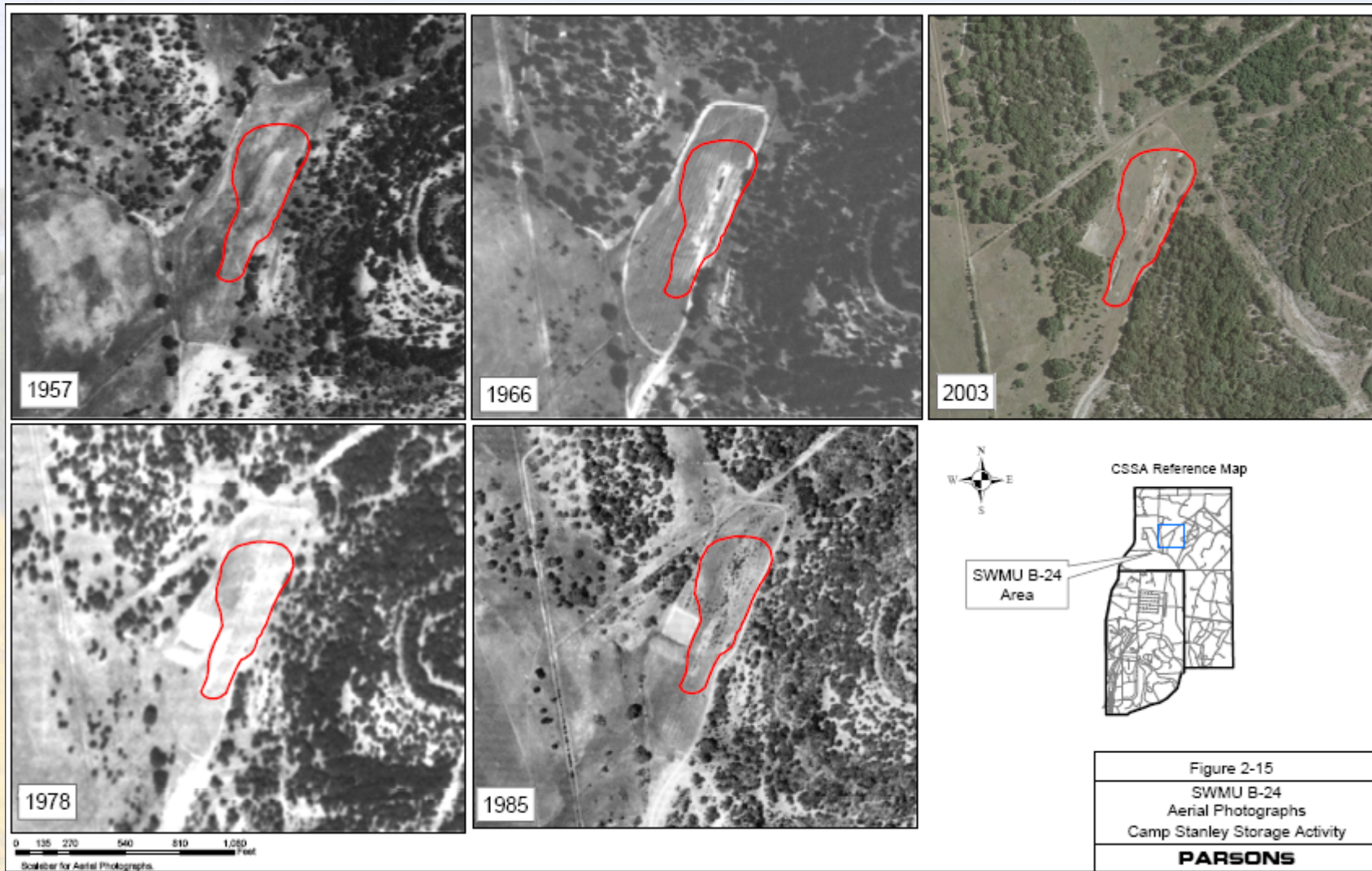
SWMU B-20/21 Historical Photo



SWMU B-20/21 Investigation Results



SWMU B-24 Historical Photo



SWMU B-24 Investigation Results



	Max Value (mg/kg)	Eco Screening (mg/kg)	Residential Tier 2 Human Health (mg/kg)
Lead	42.9	50	500
DNT	0.33	NA	0.157

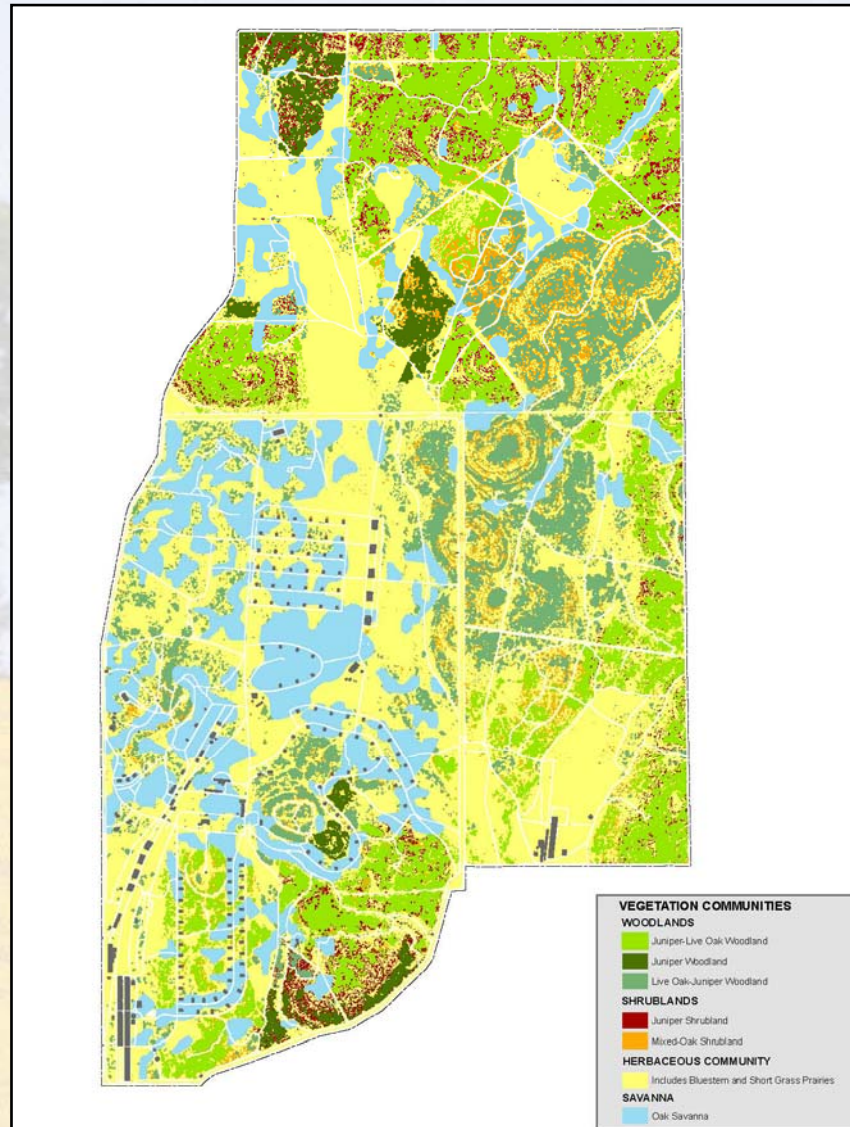
Ecological Risk Assessment Approach

- Physical Extent of ERA Area
- Conceptual Model
 - Habitat distribution
 - Key receptor species

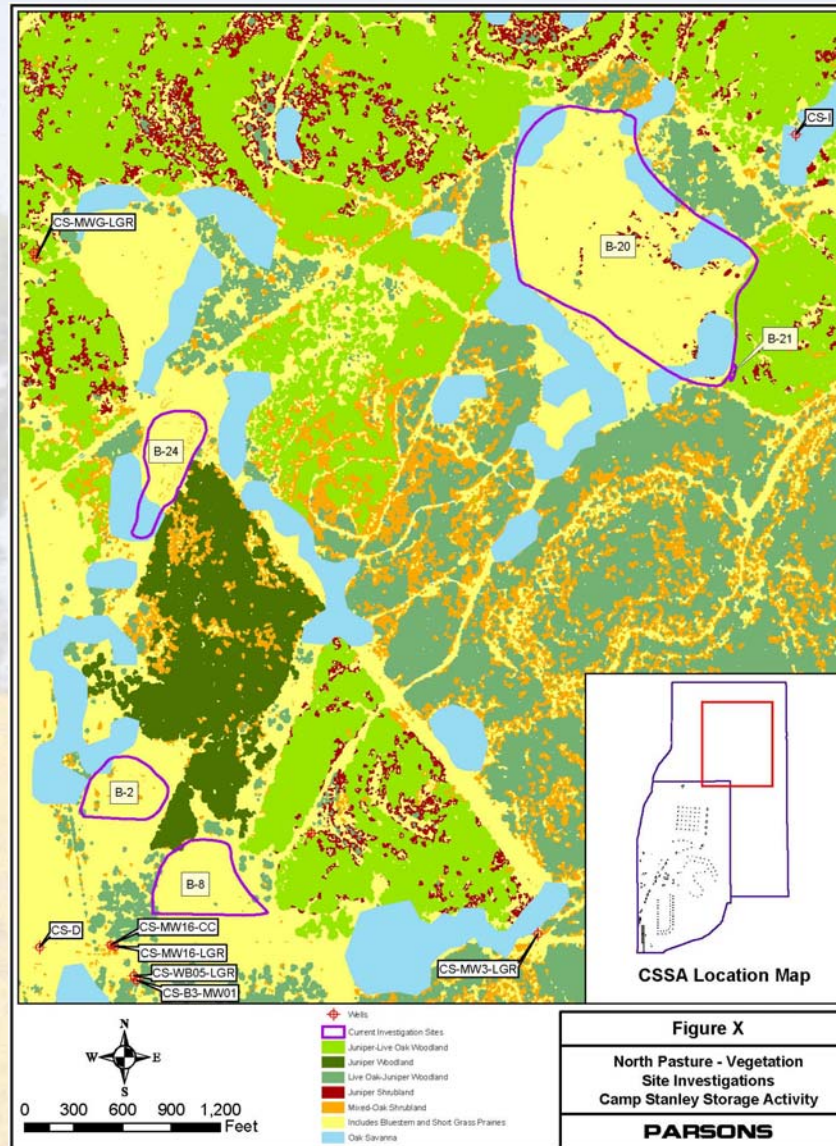
Habitat

- Overall CSSA Habitat Composition
 - Oak-Juniper woodland
 - Mixed shrubland
 - Oak savanna
 - Herbaceous (Bluesteam-dominat)
- North Pasture
 - Area predominantly woodland
 - Herbaceous cover in sites

Habitat



Habitat



Habitat

Acreage by Community

Community	Installation	North Pasture	% N.P
Woodland	1,646	771	47%
Shrublands	486	213	44%
Herbaceous	1,200	272	23%
Savanna	597	125	21%

Key Receptors

- Mammals

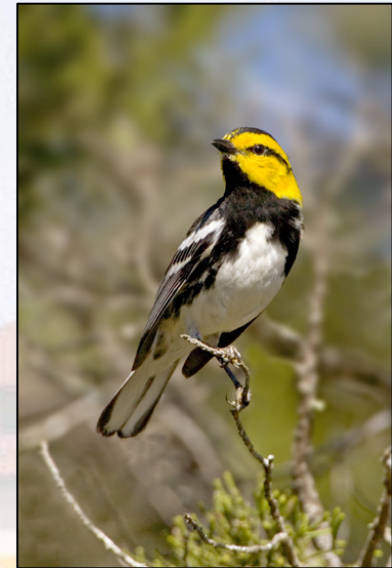
- White-footed mouse
- Short-tailed shrew
- Gray fox

- Birds

- America robin and bobwhite
- T&E: Black capped vireo and Golden cheek warbler
- Red-tailed Hawk

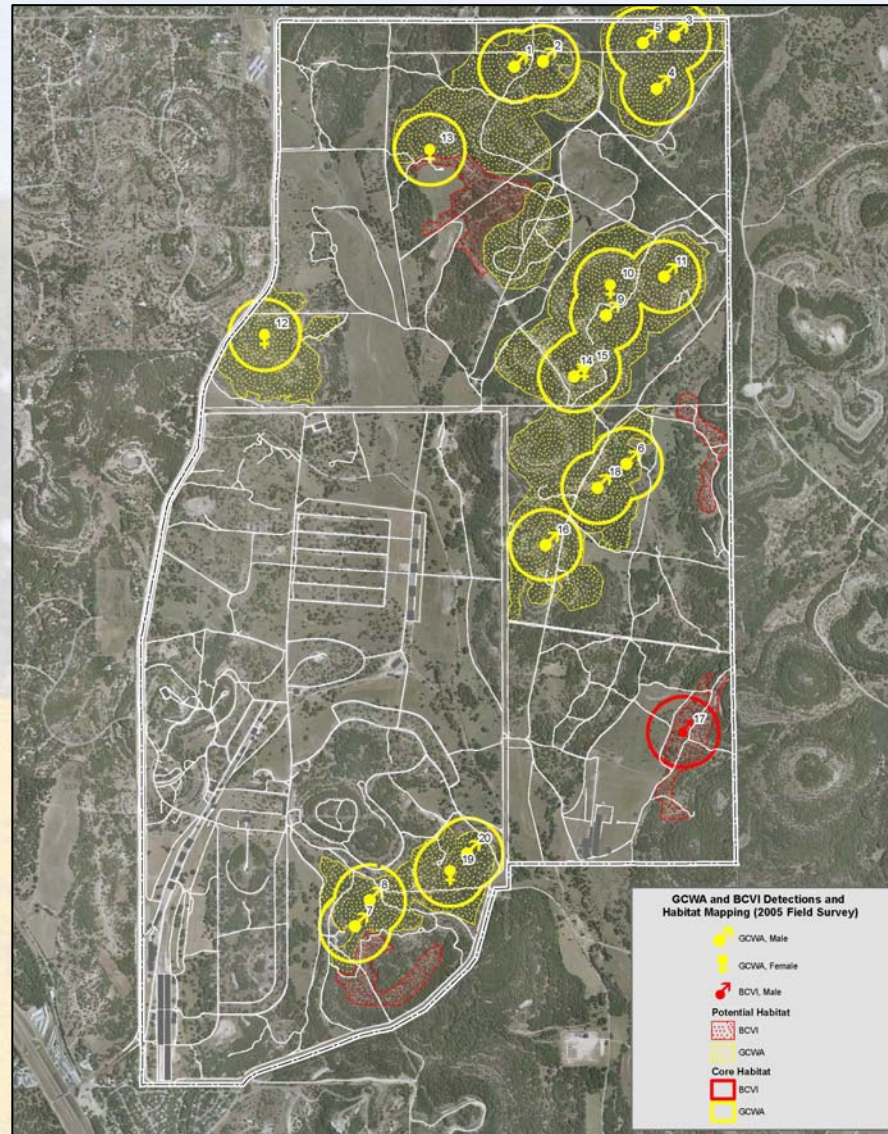


Black capped vireo

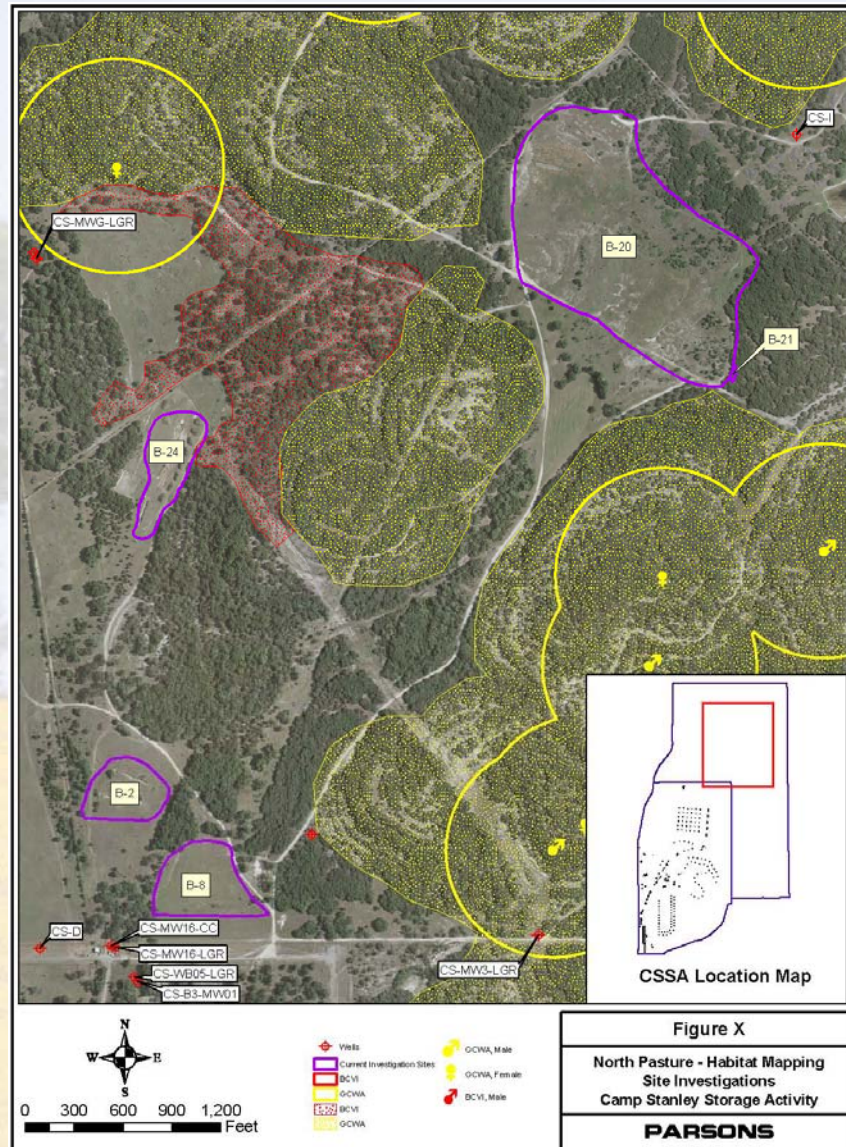


Golden cheek warbler

Detections and Habitat



Detections and Habitat





Questions?