

AOC-65 *IN-SITU* CHEMICAL OXIDATION OPERATIONS AND MAINTENANCE MANUAL



Prepared For:

**Camp Stanley Storage Activity
Boerne, Texas**

Prepared by:

PARSONS

Austin, Texas

January 2018

TABLE OF CONTENTS

| | |
|---|------------|
| CHAPTER 1 INTRODUCTION AND SUMMARY OF REMEDIAL DESIGNS | 1-1 |
| CHAPTER 2 SITE CONDITIONS | 2-1 |
| 2.1 Background | 2-1 |
| 2.2 AOC-65 Site Delineation | 2-2 |
| 2.3 Underground Injection Control Permitting | 2-2 |
| CHAPTER 3 SYSTEM DESCRIPTION | 3-1 |
| 3.1 ISCO Distribution System | 3-1 |
| 3.2 Monitoring System | 3-2 |
| 3.2.1 Field Parameter Collection | 3-2 |
| 3.2.2 Water Level Collection | 3-2 |
| 3.2.3 Analytical Sample Collection | 3-2 |
| CHAPTER 4 SYSTEMS OPERATION AND MONITORING | 4-1 |
| 4.1 Oxidant Installation | 4-1 |
| 4.2 Monitoring | 4-1 |
| 4.2.1 Monitoring Locations | 4-1 |
| 4.2.2 Sample Collection | 4-2 |
| 4.2.3 Sample Analyses | 4-2 |
| 4.2.4 Additional Field Parameter Collection (Performance Monitoring) | 4-2 |
| 4.3 Monitoring Schedule | 4-2 |
| CHAPTER 5 REPORTING REQUIREMENTS | 5-1 |
| 5.1 Documentation | 5-1 |

LIST OF FIGURES

| | |
|---|-----|
| Figure 2.1 AOC-65 Site Map..... | 2-4 |
| Figure 3.1 Cylinder Installation within AOC-65 Injection Wells..... | 3-3 |
| Figure 3.2 Monitoring Locations | 3-4 |

LIST OF TABLES

| | |
|---|-----|
| Table 4.1 ISCO Treatability Study Monitoring Locations | 4-3 |
| Table 4.2 ISCO Treatability Study Analyte List by Analytical Method | 4-4 |

APPENDICES

- Appendix A – Recommended Materials
- Appendix B – Data Collection Sheets
- Appendix C – Oxidant Consumption Rate Examples

ACRONYMS AND ABBREVIATIONS

| | |
|-------|---|
| AOC | Area of Concern |
| CFR | Code of Federal Regulations |
| CSSA | Camp Stanley Storage Activity |
| DCE | dichloroethene |
| GAC | granular activated carbon |
| IRA | Interim Removal Action |
| ISCO | <i>in-situ</i> chemical oxidation |
| MCL | maximum contaminant level |
| MW | monitoring well |
| NELAP | National Environmental Laboratory Accreditation Program |
| O&M | operations and monitoring |
| ORP | oxidation-reduction potential |
| PCE | tetrachloroethene |
| PZ | piezometer |
| RCRA | Resource Conservation and Recovery Act |
| RFI | RCRA Facility Investigation |
| SDWA | Safe Drinking Water Act |
| SIW | steam injection well |
| SVE | soil vapor extraction |
| TAC | Texas Administrative Code |
| TCE | trichloroethene |
| TCEQ | Texas Commission on Environmental Quality |
| TSW | treatability study well |
| UIC | underground injection control |
| USEPA | United States Environmental Protection Agency |
| VEW | vapor extraction well |
| VOC | volatile organic compound |
| WB | Westbay® equipped monitoring well |

CHAPTER 1 INTRODUCTION AND SUMMARY OF REMEDIAL DESIGNS

This Operations and Monitoring (O&M) Plan was created as a guide for operating the *in-situ* chemical oxidation (ISCO) injection system equipment and the associated monitoring efforts following ISCO applications at Camp Stanley Storage Activity (CSSA) in Boerne, Texas. ISCO infiltration galleries and ISCO injection wells were installed to remediate soil, fractured rock, and groundwater contamination underneath and around Building 90 and Area of Concern (AOC)-65.

The chemical oxidation process involves increasing the oxidation state of target compounds (i.e., chlorinated solvents) by introducing an oxidant into contaminated media. The targeted compounds are then transformed into by-products that are less harmful than the original compounds. Oxidation of the substance may occur by the addition of an oxygen atom, the removal of a hydrogen atom, and/or the removal of electrons without the removal of a proton from the target compound.

Several different oxidants may be considered for ISCO applications. Permanganate, Fenton's Reagent, ozone, and persulfate are a few of the more commonly applied oxidants used for environmental remediation applications. Each of these oxidants will oxidize contaminants differently based on the stoichiometry of the redox reaction between the oxidant and contaminant. The various oxidants differ in type of reaction, speed of reaction, and oxidant persistence, and specifics of the selected oxidants are discussed in Section 3.

Passive oxidant application is currently the preferred method to deliver oxidants and remediate chlorinated solvent contamination within suspected source area(s) at CSSA's AOC-65. The passive delivery of oxidants is achieved via the employment of oxidant-infused wax cylinders. The sustained-release oxidant cylinders consist of potassium permanganate (KMnO₄) and sodium persulfate (Na₂S₂O₈) crystals infused within a paraffin wax matrix, which are installed in wells around the site. Suppliers of chemical oxidants injected/applied, including oxidant infused cylinders, are presented in **Appendix A**.

Oxidant-infused wax cylinders allow for a long-term and sustained release of ISCO oxidant solution without changing groundwater gradients or flow directions. After the cylinder(s) is installed below the water table within a well, the oxidant crystals within the cylinder will solubilize into groundwater flowing through the well; as opposed to injecting large volumes of ISCO solution into the well, which may induce artificial groundwater mounding and create flow in directions contrary to natural gradients. The cylinder life-span (months to years) provides a long-term, on-demand oxidant source and therefore may treat contamination under the varying hydraulic conditions encountered throughout the deployment period.

1.1 SITE HISTORY

In 2012, an interim removal action (IRA) was conducted to remove contaminated materials beneath the concrete-lined drainage swale on the west side of Building 90. Historic uses of tetrachloroethene (PCE) within Building 90 and subsequent releases into the ditch have resulted in long-term dissolved phase PCE and trichloroethene (TCE) contamination in groundwater in the Upper and Lower Glen Rose Formations locally. The 2012 IRA consisted of the excavation of a ~320-foot-long, 3.5-foot-wide, and between 12- and 15-foot-deep trench. The trench was subsequently converted into a series of infiltration galleries to facilitate the application of chemical oxidants for an ISCO treatability study. Prior to the 2012 IRA, a soil vapor extraction (SVE)

system was operated at AOC-65; however, due to system inefficiencies, SVE activities were terminated, and system components (vapor extraction wells [VEWs]) were repurposed for ISCO monitoring. The SVE system was part of a vapor extraction pilot study in operation at AOC-65 since 2002.

Pilot and field-scale treatability studies were performed using sodium persulfate injected into infiltration galleries between 2012 and 2014. Results from the persulfate injections revealed a general reduction in PCE concentrations; however, increasing PCE concentration to the east suggested the injection volumes may have resulted in pneumatic transport of contaminated groundwater to the east.

In August and November 2015, two additional injections were performed which focused on the area between Building 90 and the infiltration trench. Results from the permanganate injections revealed distribution of ISCO solution was more widespread than anticipated, given injection volumes were much smaller than persulfate applications. Variability in flow directions from ISCO injections, however, make it difficult to pinpoint application locations that provide the best distribution.

In December 2016, twelve oxidant-infused wax cylinders were installed within six wells at AOC-65. The cylinders consist of potassium permanganate and sodium persulfate crystals infused within a paraffin wax matrix in a ratio of 38:38:24. The cylinders provide a passive means for oxidant dispersal. As groundwater enters a well and flows around installed cylinders, the oxidant crystals infused within the wax dissolve, creating an oxidant-groundwater solution which is then transported away from the well along natural groundwater gradients into the subsurface.

The objective of oxidant applications is to destroy source contaminants located in the soils and bedrock beneath AOC-65 and ultimately reduce the migration of contaminants to groundwater. The objectives of continued monitoring activities are to gather additional data to allow an evaluation and optimization of the systems' performance. Analysis of monitoring results from ongoing ISCO O&M activities at AOC-65 are examined in annual updates to the AOC-65 ISCO Injection Assessment Report.

Although the ISCO injection system installed at AOC-65 is relatively simple, routine monitoring is required to determine efficacy and oxidant requirements for future applications. If significant problems are encountered with the operation of the system, the CSSA Environmental Office at (210) 295-7067 should be notified so repairs can be initiated and coordinated. Additional points of contact include Parsons Project Manager (Ms. Julie Burdey) at (512) 719-6000 and Parsons Onsite Manager (Ms. Samantha Elliott) at (210) 347-6012.

Site background and current conditions are discussed in Section 2 of this document. Descriptions of the ISCO injection system, including layout drawings and schematics, are provided in Sections 3. System O&M is discussed in Section 4, and reporting requirements are included in Section 5 of this plan. Manufacturer information for ISCO injection materials is included in **Appendix A**, and data collection sheets are included in **Appendix B**.

CHAPTER 2 SITE CONDITIONS

2.1 BACKGROUND

Chlorinated solvents containing PCE and TCE were used in Building 90 for more than 30 years. Their use at CSSA was eliminated in 1995 and replaced with a citrus-based cleaning solvent. No definitive conclusions were made as to the source of the contamination for AOC-65.

Source characterization of the Building 90 vicinity (main portion of AOC-65) included a 2001 soil gas survey which entailed collection and analyses of 319 soil gas samples. Results of the survey included detections of PCE, TCE, cis-1,2-dichloroethene (DCE) and trans-1,2-DCE in the area around Building 90. The detection of DCE indicates that natural degradation of PCE/TCE is occurring in the subsurface.

The Final Resource Conservation and Recovery Act (RCRA) Facility Investigation (RFI) report for AOC-65 was completed in September 2002 (Parsons, 2002b). An IRA was also completed in 2002, and included the excavation of soils underlying the pavement and a drainage swale on the west side of the building. The drainage swale was lined with concrete to prevent rainwater run-off infiltration, and an SVE system was installed.

Pilot testing was initiated in 2002 at AOC-65 to evaluate the effectiveness of SVE for the removal of volatile organic compound (VOC) contamination from the vadose zone. SVE was demonstrated to be an effective method for source removal in surface formations at CSSA during an earlier pilot and treatability study at SWMU B-3. Two SVE systems were installed at AOC-65 in late 2007. These systems, known as the eastern and western AOC-65 SVE system(s), had the primary objectives of removing VOC contaminants from the soils, fractured limestone, and groundwater around AOC-65; and to decrease the migration of contaminants from the site. The western portion of the AOC-65 SVE system was expanded in 2007, and the eastern portion was expanded in 2011. The SVE pilot study was terminated in August 2012 due to reduced system efficiency. Additional details regarding the SVE treatability study at AOC-65 are described in the 2012 Update to AOC-65 Soil Vapor Extraction Operations and Maintenance Assessment Report (Parsons, 2012).

A second, more intrusive IRA was completed in 2012. This IRA included the excavation of a trench (~320 feet long, 3.5 feet wide, and between 12 and 15 feet deep) beneath the concrete-lined drainage swale west of Building 90 (installed following the 2002 IRA), and resulted in the removal of approximately 1,000 cubic yards of bedrock. The trench was subsequently converted to an infiltration gallery with discrete treatment zones to facilitate the application of chemical oxidants for the ISCO treatability study.

Pilot- and field-scale treatability studies were performed using sodium hydroxide-activated sodium persulfate applied to the trench infiltration gallery in 2012, 2013, and 2014. Approximately 10, 22, and 66 tons of activated persulfate were applied in those years, respectively. Results from the persulfate injections revealed a general reduction in PCE concentrations; however, increasing PCE concentration to the east suggested the injection volumes may have resulted in pneumatic transport of contaminated groundwater to the east.

In July 2015, three new infiltration galleries were installed adjacent to Building 90, and one additional infiltration gallery was installed inside a concrete vault located within the building.

In August and November 2015, two permanganate injections were performed in the new infiltration galleries. Approximately 3,500 gallons and 7,000 gallons of sodium permanganate were applied in August and November, respectively. The transition from sodium persulfate to sodium permanganate was intended to reduce total volumes injected, thereby reducing artificial mounding and changes to the groundwater gradients and flow directions locally. Results from the permanganate revealed distribution of ISCO solution was more widespread than anticipated since injection volumes were much smaller than for persulfate applications. Variability in flow directions from ISCO injections, however, make it difficult to pinpoint application locations that provide the best distribution.

2.2 AOC-65 SITE DELINEATION

Based on the results of the site investigation and groundwater results from nearby discrete interval Westbay® (WB) wells and monitoring wells (TO 42 Well Installation Report, Volume 5-2.3, CSSA Environmental Encyclopedia), the area within AOC-65 containing VOCs that may be successfully treated by ISCO appears to extend immediately around Building 90 in the apparent down gradient direction to the west/southwest. VOC concentrations above the Safe Drinking Water Act (SDWA) Maximum Contaminant Levels (MCLs) for groundwater have been encountered at depths up to 300 feet below grade, and at significantly higher levels in monitoring wells screened near the surface (upper 50 feet). The total volume of the treatment area within AOC-65 is unknown. The location of the AOC-65 ISCO infiltration galleries and former solvent vat location are shown on **Figure 2.1**.

2.3 UNDERGROUND INJECTION CONTROL PERMITTING

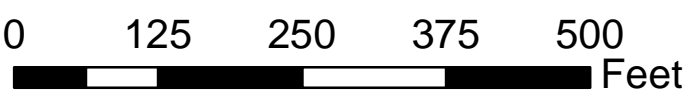
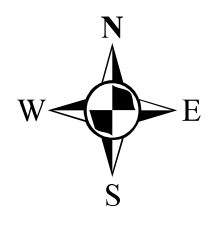
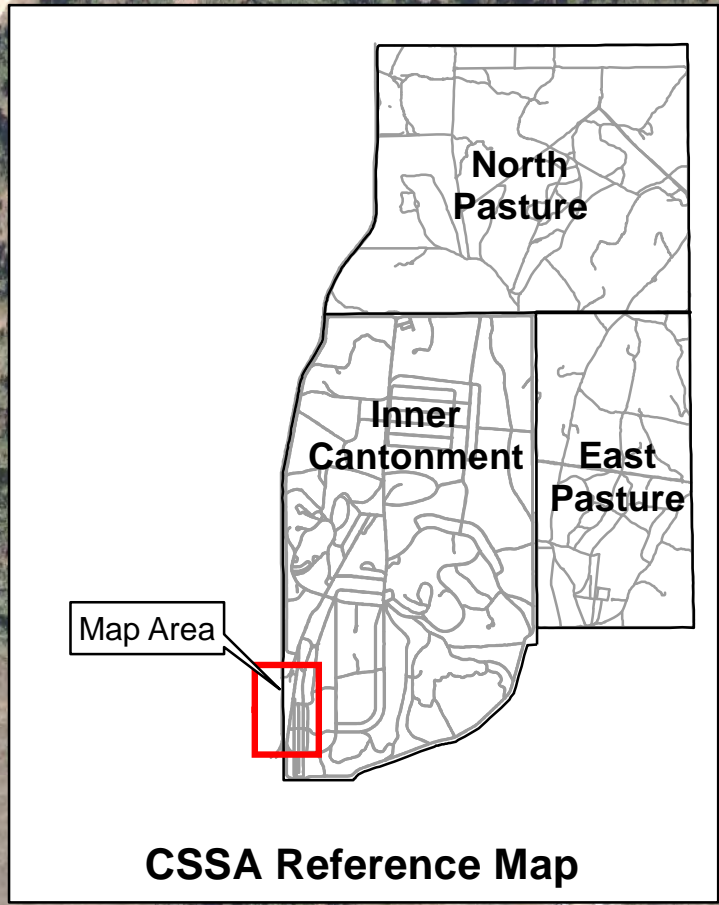
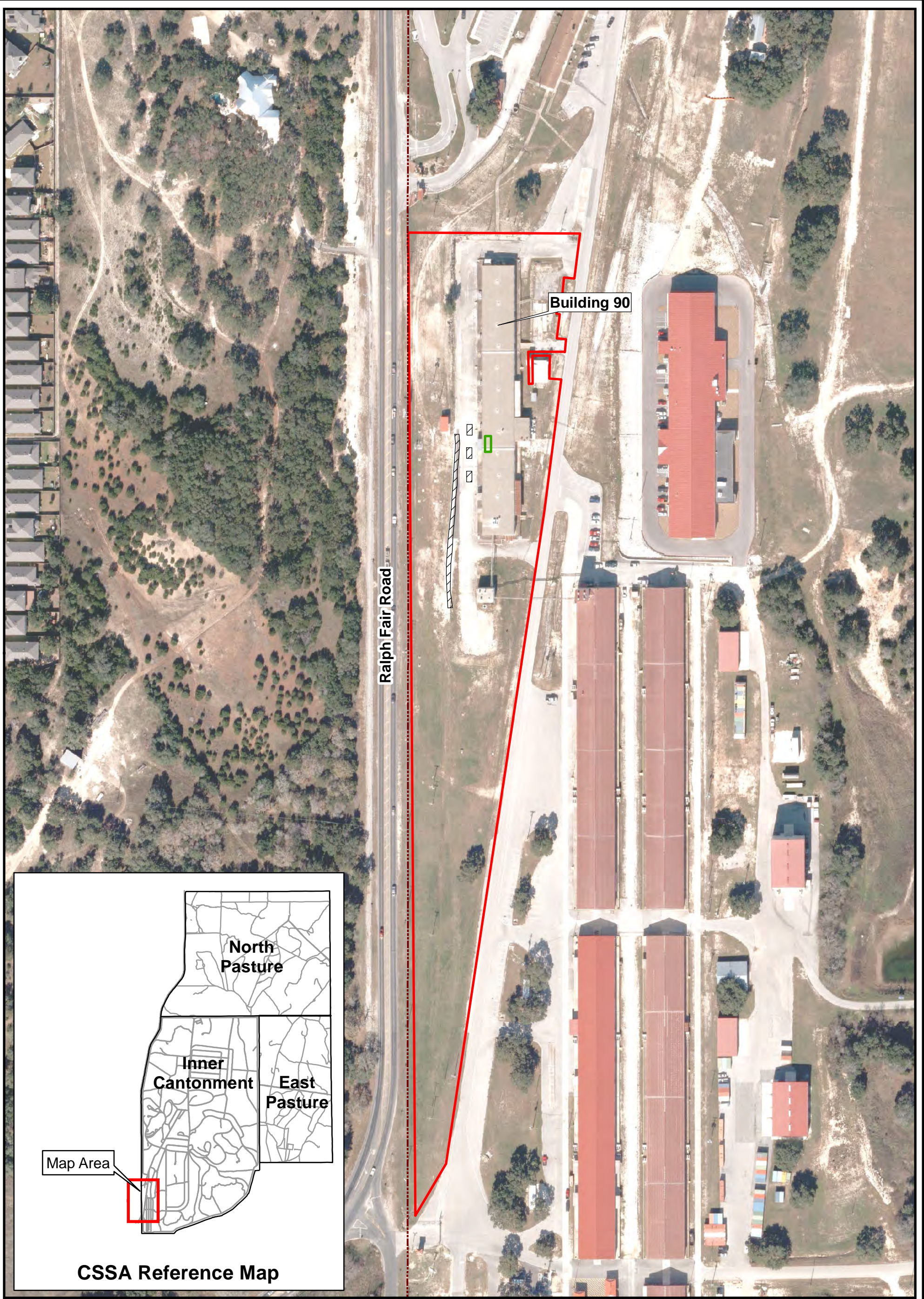
The AOC-65 ISCO injection system operates under a Texas Commission on Environmental Quality (TCEQ) Underground Injection Control (UIC) Permit, Authorization Number 5X2600645.

Requirements associated with this UIC permit include:

- Construction of injection wells or galleries shall meet standards provided in 30 Texas Administrative Code (TAC) §331.132 and as-built construction diagrams or well logs shall be submitted to the UIC Permits Team, Radioactive Materials Division within 30 days of completion;
- Operational and status changes shall be reported to and approved by the UIC Permits Team;
- Closure (plugging) of injection wells shall comply with standards provided in 30 TAC §331.133. Closure reports, including injection well monitoring data (injection volumes, pressures, and results) and plugging reports, shall be submitted to the UIC Permits Team, Radioactive Materials Division within 60 days of conclusion of injection activities; and
- Injection volumes, pressures, and concentrations of contaminants (including pH and total dissolved solids) in the injected groundwater shall be sampled monthly at the point of reinjection and submitted to the Permits Team, Radioactive Materials Division on a quarterly basis. The concentration of the contaminants in the injectate shall not exceed those in the extracted groundwater or those limits listed in 40 Code of Federal Regulations (CFR) §261.24 Toxicity characteristic table 1 that would deem them hazardous by concentration, whichever is lower.

- Following installation of oxidant-infused wax cylinders, groundwater sampling was performed quarterly (see **Table 4.1** for list of sampling locations). Groundwater samples are also regularly collected from nearby monitoring wells, private water supply wells, and all zones of WB wells within ¼ mile of the injection point(s) of AOC-65. Additional analyses may include alkalinity, hydrogen sulfide, total dissolved solids, potassium, and manganese, as well as the collection of field parameters, pH, dissolved oxygen, specific conductance, and oxidation-reduction potential.

Modification of the Class V UIC Permit was submitted to the TCEQ UIC Permits Team in October 2017. The requested modifications included the use of oxidant-infused cylinders as injectates and requested that all currently permitted injectates (sodium persulfate, sodium hydroxide, sodium permanganate, potassium permanganate) be allowed in all permitted wells at AOC-65 including: piezometers (PZs), treatability study wells (TSWs), vapor extraction wells (VEWs), steam injection well (SIW), ISCO injection wells (IIWs); and infiltration cells and infiltration trench. Approval of the requested modifications to the Class V Injection Well Authorization was granted by the TCEQ on November 13, 2017.



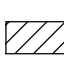



-  2012 IRA Trench/Infiltration Trench Exterior Infiltration Cells
-  Former Solvent Vat Location/Interior Infiltration Cell Location
-  AOC-65
-  CSSA Boundary

Figure 2.1
AOC-65
Site Map
Camp Stanley Storage Activity

PARSONS

CHAPTER 3 SYSTEM DESCRIPTION

3.1 ISCO DISTRIBUTION SYSTEM

ISCO treatment at AOC-65 is currently achieved by suspending permanganate wax cylinders within six monitoring wells known to have substantial VOC concentrations near Building 90 (TSWs -01 and -05, VEWs -19, -27, and -32, and SIW-01). Cylinder sizes are either 2.5 inches or 1.35 inches in diameter and are 18 inches in length, and will easily fit in any 4-inch-diameter monitoring well. Typically, wells at AOC-65 are 4 inches in diameter, with SIW-01, VEWs -28A and -28B and the Westbay wells being the exceptions. Flexible polyethylene mesh sleeves are used to secure the cylinders so they can be lowered into place and removed during sampling. Knots tied in the mesh sleeves are used to separate cylinders to target specific intervals within well screens and maximize exposed surface area. Mesh sleeving may be cut to fit the total depth of each well so the sleeve can be secured at the top of the casing and maintain cylinder distribution throughout the screened interval. Where impractical by depth of well, the sleeves may be attached to a vinyl-coated, stainless steel cable with stainless steel thimbles and clamps, and cable ties and lowered into position. The sleeves are lowered so the top of the uppermost cylinder is aligned with the top of the well screen or at the groundwater interface, whichever is lower. The protective mesh sleeves, cable, fittings, and individual cylinders are inspected for damage and color loss and replaced as necessary during quarterly sampling events.

Twelve oxidant-infused wax cylinders were originally installed within six wells at AOC-65 in December 2016. The cylinders consist of potassium permanganate, sodium persulfate, and paraffin wax in a ratio of 38:38:24. The cylinders are 18 inches long and either 2.5 or 1.35 inches in diameter. The 2.5-inch cylinders each weigh 5.75 pounds, and the 1.35-inch cylinders weigh 2.875 pounds. The cylinders were installed at the base of the screened interval in each of the six wells. Two 2.5-inch cylinders were installed in wells VEW-19, VEW-32, and TSW-01. Two 1.35-inch cylinders were installed in wells VEW-27, SIW-01, and TSW-05.

Permanganate has a moderate oxidation potential (1.7V) and permanganate solution is denser than water, which allows for more effective vertical dispersal within fractures or porous media. Permanganate does not auto-decompose; therefore, oxidant degradation occurs only due to the reaction with contaminants (VOCs) or other encountered natural oxidant demands, including naturally-occurring organic carbon. Very low concentrations of permanganate are effective for the transformation of PCE to benign compounds. The persistence of permanganate also allows for greater dispersal from the application site, and therefore may affect a greater volume of contaminated media than faster-reacting or less persistent oxidants.

Persulfate has a slightly higher direct oxidation potential (2.1V) than permanganate. In addition to direct oxidation, persulfate may be induced to form sulfate radicals, which are one of the strongest aqueous oxidizing species with an oxidizing potential of 2.6V. While persulfate will auto-decompose, generally within a few weeks, persulfate oxidation is kinetically fast, and the sulfate radical is relatively stable, allowing for greater transport within the subsurface than other radical species.

Cylinders were originally installed at the base of the screened interval in each well to maximize contact with groundwater and provide a persistent source of oxidant; however, vertical profiling of VOCs and permanganate concentrations within two of the wells indicated untreated

groundwater occurred above the installed cylinders, and was potentially flowing through the screened interval, bypassing treatment. Cylinders were redistributed within well screen intervals on November 14, 2017 (**Figure 3.1**), at which time an additional 1.35-inch diameter cylinder was installed in each of the six wells.

3.2 MONITORING SYSTEM

The monitoring system for the ISCO injection system includes the network of wells within and surrounding AOC-65 including VEWs, monitoring wells (MWs), WBs, treatability study wells (TSWs), and piezometers (PZs) (**Figure 3.2**).

3.2.1 Field Parameter Collection

Field parameters will be collected using a hand-held water quality multi-parameter meter. A YSI-556 (or similar) will be used to collect temperature, pH, conductivity, dissolved oxygen, and oxidation-reduction potential. Field parameters will be collected at shallow monitoring locations provided there is greater than 0.5 feet of saturated thickness within the casing. If insufficient saturated thickness is present, no field parameters will be collected. For deep wells, a bailer will be used to collect a sample for field parameter analysis if no pump is installed; however, if sample collection with a bailer is deemed impracticable due to well design or configuration, no field parameters will be collected. Field parameters will not be collected at WB wells unless samples are being collected for analytical purposes. Additionally, to prevent damage to sensitive probes from high oxidant concentrations, no field parameters are collected at wells containing cylinders.

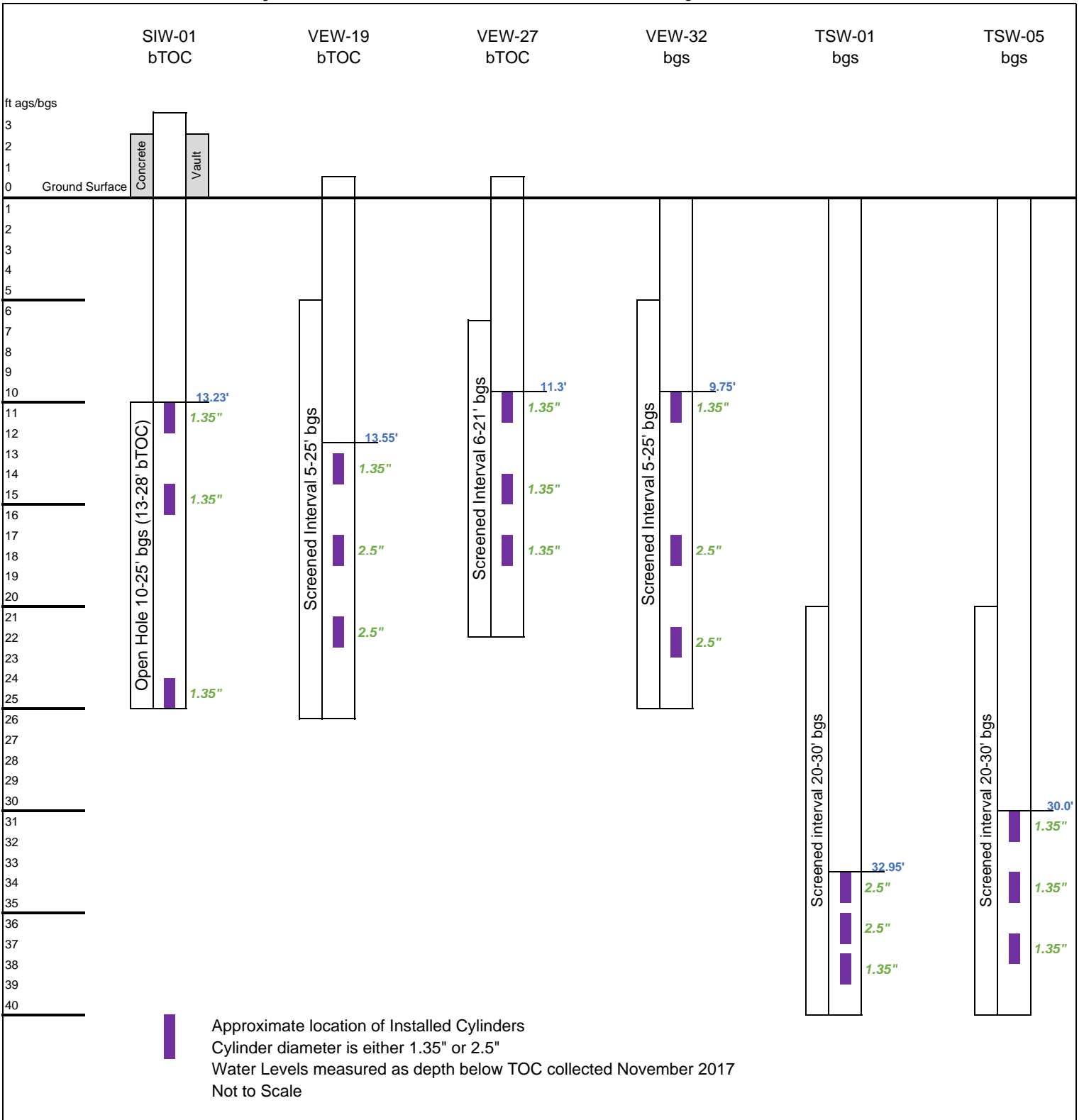
3.2.2 Water Level Collection

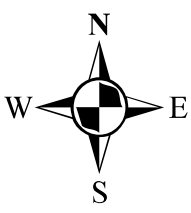
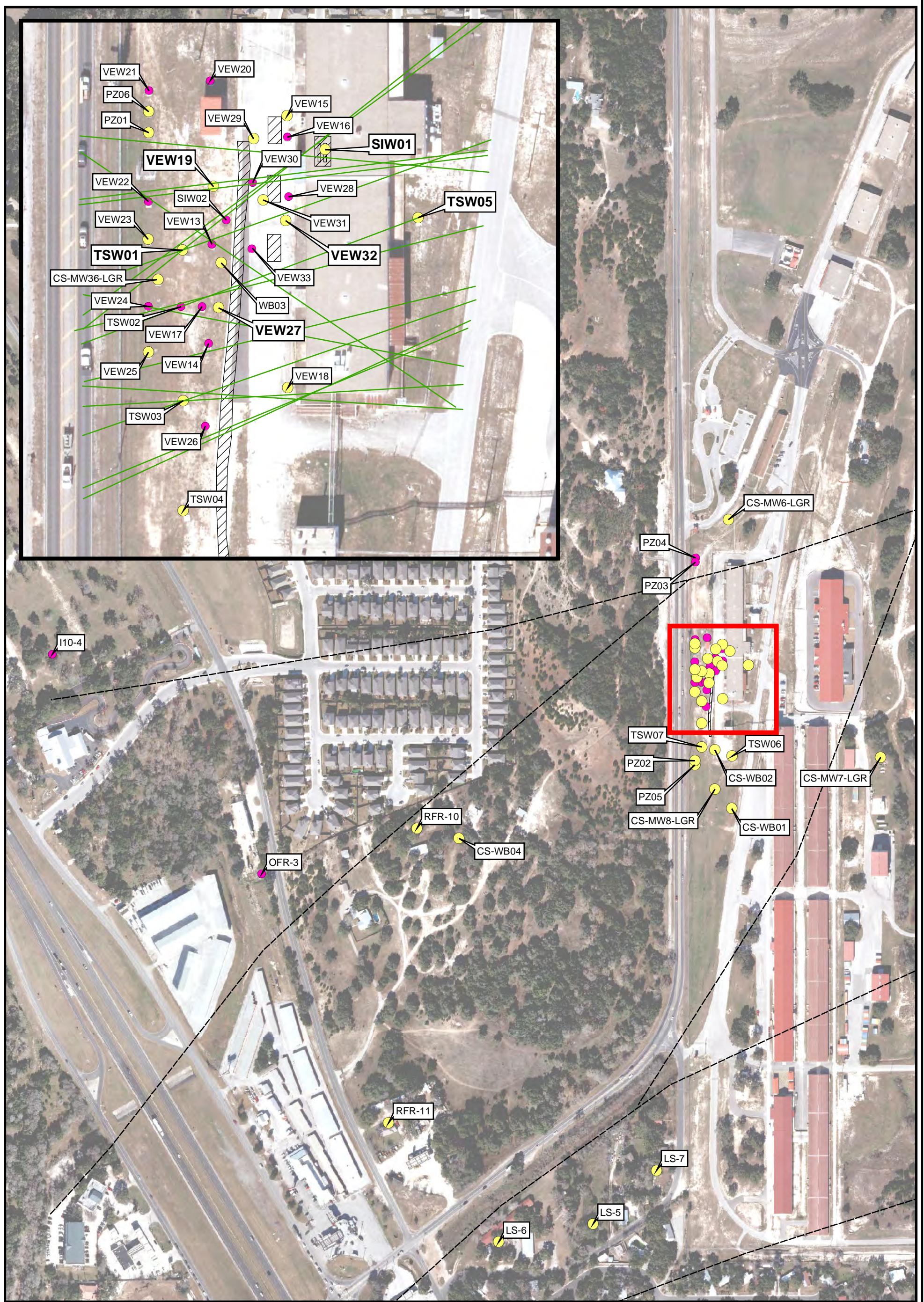
Water levels will be collected using a standard water level indicator at monitoring wells. Depth to water will be measured from the top of casing, and then used to calculate water table elevations. Pressures will be recorded in WB wells for water level calculation during scheduled sampling events.

3.2.3 Analytical Sample Collection

Samples will be collected with disposable poly bailers, WB equipment, peristaltic pumps or well-installed pumps (QED or electric submersible) within supply or monitoring wells.

Figure 3.1 Cylinder Distribution within AOC-65 Injection Wells





0 200 400 800 Feet

- Fracture Trends Identified in IRA
- - - USGS Mapped Faults
- ISCO Infiltration Gallery/Cells
- Primary Monitoring Locations
- Secondary Monitoring Locations
- Label** = ISCO Cylinder Installation Well

Figure 3.2
AOC-65 ISCO
Monitoring Locations
Camp Stanley Storage Activity

PARSONS

CHAPTER 4 SYSTEMS OPERATION AND MONITORING

O&M activities to be performed on the CSSA ISCO injection system include oxidant installation and regulatory monitoring. These activities are discussed in the following subsections.

4.1 OXIDANT INSTALLATION

ISCO application at AOC-65 is completed by suspending permanganate wax cylinders within six monitoring wells known to have VOC concentrations near Building 90 (TSWs -01 and -05; VEWs -19, -27, and -32; and SIW-01). Cylinder sizes are 2.5 or 1.35 inches in diameter and 18 inches in length. Flexible polyethylene mesh sleeves are used to secure the cylinders and act as a holder so they can be lowered into place and removed during sampling. The cylinders are separated via knots tied in the mesh sleeve at intervals to distribute cylinders along the screened interval and maximize exposed surface area. The mesh is then lowered so the top of the uppermost cylinder is at or near the top of the well screen. The mesh sleeve is secured to the top of the well casing or protective well cover to ensure that the cylinders remain in place. Should the depth of the well warrant, cylinders in mesh sleeves will be attached to a vinyl-coated, stainless steel cable with stainless steel thimbles and clamps, and summarily lowered to appropriate depth. The mesh and cylinders will be lowered to the top of the screened interval or top of the encountered groundwater, whichever is lower, to provide adequate cylinder distribution over the screened interval and ensure cylinders remain submerged for as long as possible. The protective netting, cable, fittings, and cable ties will be inspected for damage and replaced as necessary during quarterly sampling events. Cylinder longevity is affected by the rate of natural oxidant demand and site groundwater seepage velocity. Due to a relatively low natural oxidant demand at AOC-65, cylinders are expected to continuously release oxidant for up to 2 years. In order to maintain a consistent source of oxidant at the site, cylinders will be visually inspected during each quarterly sampling event and replaced when the permanganate-crystal color is noticeably faded (**Appendix C**).

In December 2016, two cylinders were originally installed at the base of the screened interval in each well to maximize contact with groundwater and provide a persistent source of oxidant. A series of groundwater samples collected in September 2017 to determine the vertical distribution of VOCs within two cylinder-installed wells indicated untreated groundwater occurred above the cylinders, and was potentially flowing through the well screen, bypassing treatment. In November 2017, an additional 1.35 inch cylinder was installed, and cylinders were redistributed in each of the six wells to minimize the potential for groundwater to bypass treatment.

4.2 MONITORING

Monitoring the progress of the ISCO applications includes baseline and post-installation sampling. Sampling is conducted at on- and off-post wells (MWs and VEWs) on a quarterly basis. In addition to groundwater sampling, field analysis of permanganate, total chlorinated solvent using field test kits, and collection of field parameters, including pH, oxidation-reduction potential (ORP), and specific conductance may be completed at on-post wells and VEWs.

4.2.1 Monitoring Locations

Monitoring locations are presented on **Figure 3.2**. Samples are collected for VOCs, total dissolved solids, chloride, and metals analyses quarterly following ISCO cylinder application at

six off-post wells and a selection of on-post wells (**Table 4.1**). Field parameters are collected from TSWs and at additional on-post monitoring locations including VEWs, WBs (various zones), PZs, and MWs. To determine the region of ISCO influence, samples may be collected from additional wells (TSWs, PZs, VEWs, MWs) or WB well zones for field and/or laboratory analyses from among those wells not sampled on a regular quarterly basis.

4.2.2 Sample Collection

Several sampling methods are required to obtain samples from the various types of wells included in the ISCO monitoring network. The monitoring network includes monitoring wells with or without QED pumps installed, WB multi-port monitoring wells, VEWs, PZs and water supply wells with submersible electric pumps and granular activated carbon (GAC) filters. Samples are collected with dedicated or disposable poly bailers, WB equipment or installed pumps. Pre- and post-GAC samples will be collected at GAC-equipped supply wells.

4.2.3 Sample Analyses

Samples will be analyzed by a National Environmental Laboratory Accreditation Program (NELAP)-certified laboratory for VOCs by United States Environmental Protection Agency (USEPA) Method 8260B, priority pollutant metals (antimony, arsenic, beryllium, cadmium, chromium, copper, lead, mercury, nickel, selenium, silver, thallium, and zinc) by USEPA Method 6010B/7470A, total manganese by USEPA Method M4500, and sulfate and chloride by USEPA Method 300.0. ISCO monitoring will continue to be performed quarterly. The most recent sampling data collected prior to cylinder installation (September 2016) will serve as the baseline data for comparison. Specific analytes for the various analytical methods are given in **Table 4.2**.

4.2.4 Additional Field Parameter Collection (Performance Monitoring)

Field parameters will be collected using a hand-held water quality multi-parameter meter. A YSI-556 (or similar) will be used to collect temperature, pH, conductivity, dissolved oxygen, and oxidation-reduction potential. Field parameters will be collected at shallow monitoring locations, provided there is more than 0.5 feet of saturated thickness within the well. If insufficient saturated thickness is present, no field parameters (other than water level) will be collected. For deep wells, a bailer will be used to collect a sample if no pump is installed; however, if sample collection with a bailer is deemed impracticable due to well design or configuration, no field parameters will be collected. Field parameters will not be collected at ISCO cylinder installation locations or at WB wells unless samples are being collected for analytical purposes.

Water levels will be collected using a standard water level indicator at monitoring wells. Depth to water will be measured from the top of casing, and then used to calculate water table elevations. Pressures will be recorded in WB wells for water level calculation during scheduled sampling events. Performance monitoring will be conducted in accordance with the long-term monitoring optimization plan. Forms for recording field data are provided in **Appendix B**.

4.3 MONITORING SCHEDULE

Following application of the ISCO materials, groundwater sampling will occur quarterly at a selection of monitoring wells located within AOC-65. Groundwater samples will also be collected from nearby monitoring wells, private water supply wells, and a selection of WB well zones (UGR-01, LGR-01, and LGR-09 or LGR-11) within ¼ mile of AOC-65. The monitoring schedule may be adjusted to include sampling associated with additional cylinder applications, or on an as-needed basis based on changes in field conditions or monitoring results.

Table 4.1
ISCO Corrective Measure Monitoring Locations

| Off-Post Wells | On-Post Wells | Additional On-Post Monitoring Locations |
|----------------|---------------|---|
| LS-5 | CS-MW6 | VEWs (15, 18, 19 , 23, 25, 27 , 29, 31, and 32) |
| LS-6 | CS-MW7 | CS-WB-01 (UGR-01, LGR-01) |
| LS-7 | CS-MW8 | CS-WB-02 (UGR-01, LGR-01) |
| RFR-10 | CS-MW36 | CS-WB-03 (UGR-01, LGR-01) |
| RFR-11 | CS-WB01-LGR09 | TSWs (01 , 03, 04, 05 , 06, and 07) |
| CS-WB04-LGR11 | CS-WB02-LGR09 | PZs (01, 02, 05, and 06) |
| | CS-WB03-LGR09 | SIW-01 |

***BOLD** denotes permanganate cylinder installation locations.

Table 4.2
ISCO Corrective Measure Analyte List by Analytical Method

| Analysis | Volatile Organic Compounds | Priority Pollutant Metals | Total Manganese | Anions |
|-----------------|--|--|------------------------|---------------------|
| Method | SW8260B | SW6010B/7470A | M4500 | SW9056 |
| Analytes | 1,1-dichloroethene <i>Cis</i> -1,2-dichloroethene Tetrachloroethene Trichloroethene <i>Trans</i> -1,2-dichloroethene Vinyl chloride | Antimony Arsenic Beryllium Cadmium Chromium Copper Lead Mercury Nickel Selenium Silver Thallium Zinc | Manganese | Chloride Sulfate |

CHAPTER 5 REPORTING REQUIREMENTS

5.1 DOCUMENTATION

An ISCO Phase V Assessment Report will be prepared throughout the operational period. This report will include documentation of any new monitoring/injection well installations and infiltration gallery maintenance, analytical data from sampling events, performance monitoring data, and a summary of O&M activities carried out during the operational period.

Additionally, an Annual Status Report that provides a summary of ISCO activities conducted at AOC-65 during the prior year will be prepared and submitted to TCEQ as specified by the UIC permit (Authorization No. 5X2600645).

APPENDIX A
RECOMMENDED MATERIALS

| RECOMMENDED MATERIALS | SUPPLIER | CONTACT |
|--|-------------------------------------|--|
| Sustained-Release Oxidant Cylinders | Carus Corporation | (815) 223-1500 email: salesmkt@caruscorporation.com |
| Polyethylene Mesh Sleeves | McMaster-Carr Catalog #: 5969K47 | (404) 346-7000 email: atl.sales@mcmaster.com |

**APPENDIX B
DATA COLLECTION SHEETS**

ISCO Sampling AOC-65

Personnel: _____ Permit required samples shaded gray.

Sampling Event: _____

| Well ID | TD / pump depth | Water Level ('BTOC) | Sample Date | Sample Time | Temp. (°C) | Cond. (ms/cm ²) | pH | DO | ORP |
|-------------|-----------------|---------------------|-------------|-------------|------------|-----------------------------|----|----|-----|
| LS-5 | NA | | | | | | | | |
| LS-6 | NA | | | | | | | | |
| LS-7 | NA | | | | | | | | |
| OFR-3 | NA | | | | | | | | |
| RFR-10 | NA | | | | | | | | |
| RFR-11 | NA | | | | | | | | |
| II0-4 | NA | | | | | | | | |
| MW36-LGR | 361.5 | | | | | | | | |
| MW8-LGR | 302 | | | | | | | | |
| MW7-LGR | 293 | | | | | | | | |
| MW6-LGR | 314 | | | | | | | | |
| VEW-13 | 41 | | | | | | | | |
| VEW-14 | 61 | | | | | | | | |
| VEW-15 | 13 | | | | | | | | |
| VEW-16 | 41 | | | | | | | | |
| VEW-17 | 52.5 | | | | | | | | |
| VEW-18 | 56 | | | | | | | | |
| VEW-19 | 26 | | | | | | | | |
| VEW-20 | 25.7 | | | | | | | | |
| VEW-21 | 27 | | | | | | | | |
| VEW-22 | 51 | | | | | | | | |
| VEW-23 | 21 | | | | | | | | |
| VEW-24 | 50 | | | | | | | | |
| VEW-25 | 21.5 | | | | | | | | |
| VEW-26 | 50 | | | | | | | | |
| VEW-27 | 21 | | | | | | | | |
| VEW-28A | 120 | | | | | | | | |
| VEW-28B | 179 | | | | | | | | |
| VEW-29 | 40 | | | | | | | | |
| VEW-30 | 25 | | | | | | | | |
| VEW-31 | 40 | | | | | | | | |
| VEW-32 | 25 | | | | | | | | |
| VEW-33 | 25 | | | | | | | | |
| IIW-01 | | | | | | | | | |
| IIW-02 | | | | | | | | | |
| IIW-03 | | | | | | | | | |
| IIW-04 | | | | | | | | | |
| PZ-01 | 132.35 | | | | | | | | |
| PZ-02 | 50.26 | | | | | | | | |
| PZ-03 | 134.2 | | | | | | | | |
| PZ-04 | 43.1 | | | | | | | | |
| PZ-05 | 126.87 | | | | | | | | |
| PZ-06 | 43.64 | | | | | | | | |
| TSW-01 | 40 | | | | | | | | |
| TSW-02 | 40 | | | | | | | | |
| TSW-03 | 40 | | | | | | | | |
| TSW-04 | 40 | | | | | | | | |
| TSW-05 | 40 | | | | | | | | |
| TSW-06 | 51 | | | | | | | | |
| TSW-07 | 40 | | | | | | | | |
| AOC65-MW01 | 31.5 | | | | | | | | |
| AOC65-MW02A | 18.66 | | | | | | | | |
| AOC65-MW02B | 31.65 | | | | | | | | |
| AOC65-MW03 | 31.3 | | | | | | | | |

ISCO Sampling AOC-65

Personnel: _____ Permit required samples shaded gray.

Sampling Event: _____

| Westbay Zone | Depth | Sample Date | Sample Time | ATM pressure | Outside Pressure | Inside Pressure | Temp. (°C) | Cond. (ms/cm ²) | pH | DO | ORP |
|--------------|-------|-------------|-------------|--------------|------------------|-----------------|------------|-----------------------------|----|----|-----|
| WB01-UGR-01 | 48 | | | | | | | | | | |
| WB01-LGR-01 | 86 | | | | | | | | | | |
| WB01-LGR-02 | 113 | | | | | | | | | | |
| WB01-LGR-03 | 133 | | | | | | | | | | |
| WB01-LGR-04 | 168 | | | | | | | | | | |
| WB01-LGR-05 | 196 | | | | | | | | | | |
| WB01-LGR-06 | 220 | | | | | | | | | | |
| WB01-LGR-07 | 244 | | | | | | | | | | |
| WB01-LGR-08 | 280 | | | | | | | | | | |
| WB01-LGR09 | 300 | | | | | | | | | | |
| WB02-UGR-01 | 41 | | | | | | | | | | |
| WB02-LGR-01 | 71 | | | | | | | | | | |
| WB02-LGR-02 | 100 | | | | | | | | | | |
| WB02-LGR-03 | 135 | | | | | | | | | | |
| WB02-LGR-04 | 158 | | | | | | | | | | |
| WB02-LGR-05 | 187 | | | | | | | | | | |
| WB02-LGR-06 | 213 | | | | | | | | | | |
| WB02-LGR-07 | 248 | | | | | | | | | | |
| WB02-LGR-08 | 287 | | | | | | | | | | |
| WB02-LGR-09 | 297 | | | | | | | | | | |
| WB03-UGR-01 | 32 | | | | | | | | | | |
| WB03-LGR-01 | 63 | | | | | | | | | | |
| WB03-LGR-02 | 95 | | | | | | | | | | |
| WB03-LGR-03 | 122 | | | | | | | | | | |
| WB03-LGR-04 | 139 | | | | | | | | | | |
| WB03-LGR-05 | 180 | | | | | | | | | | |
| WB03-LGR-06 | 211 | | | | | | | | | | |
| WB03-LGR-07 | 240 | | | | | | | | | | |
| WB03-LGR-08 | 287 | | | | | | | | | | |
| WB03-LGR-09 | 297 | | | | | | | | | | |
| WB04-UGR-01 | 47 | | | | | | | | | | |
| WB04-LGR-01 | 79 | | | | | | | | | | |
| WB04-LGR-02 | 100 | | | | | | | | | | |
| WB04-LGR-03 | 130 | | | | | | | | | | |
| WB04-LGR-04 | 180 | | | | | | | | | | |
| WB04-LGR-06 | 226 | | | | | | | | | | |
| WB04-LGR-07 | 256 | | | | | | | | | | |
| WB04-LGR-08 | 292 | | | | | | | | | | |
| WB04-LGR-09 | 315 | | | | | | | | | | |
| WB04-LGR-10 | 335 | | | | | | | | | | |
| WB04-LGR-11 | 367 | | | | | | | | | | |

ISCO Sampling AOC-65

Personnel: _____ **Bold = Performance Monitoring Samples**
 Permit required samples shaded gray.

Sampling Event: 30 day 60 day 90 day other: _____

| Well ID | TD / pump depth | Water Level ('BTOC) | Sample Date | Sample Time | Temp. (°C) | Cond. (ms/cm ²) | pH | DO | ORP |
|----------|-----------------|---------------------|-------------|-------------|------------|-----------------------------|----|----|-----|
| LS-5 | NA | | | | | | | | |
| LS-6 | NA | | | | | | | | |
| LS-7 | NA | | | | | | | | |
| OFR-3 | NA | | | | | | | | |
| RFR-10 | NA | | | | | | | | |
| RFR-11 | NA | | | | | | | | |
| MW36-LGR | 361.5 | | | | | | | | |
| MW8-LGR | 302 | | | | | | | | |
| MW7-LGR | 293 | | | | | | | | |
| MW6-LGR | 314 | | | | | | | | |
| VEW-15 | 13 | | | | | | | | |
| VEW-19 | 26 | | | | | | | | |
| VEW-25 | 21.5 | | | | | | | | |
| VEW-27 | 21 | | | | | | | | |
| VEW-32 | 25 | | | | | | | | |
| PZ-01 | 132.35 | | | | | | | | |
| PZ-02 | 50.26 | | | | | | | | |
| PZ-05 | 126.87 | | | | | | | | |
| PZ-06 | 43.64 | | | | | | | | |
| TSW-01 | 40 | | | | | | | | |
| TSW-03 | 40 | | | | | | | | |
| TSW-04 | 40 | | | | | | | | |
| TSW-05 | 40 | | | | | | | | |
| TSW-07 | 40 | | | | | | | | |

ISCO Sampling AOC-65

Personnel: _____ **Bold = Performance Monitoring Samples**
 Permit required samples shaded gray.

Sampling Event: 30 day 60 day 90 day other: _____

| Westbay Zone | Depth | Sample Date | Sample Time | ATM pressure | Outside Pressure | Inside Pressure | Temp. (°C) | Cond. (ms/cm ²) | pH | DO | ORP |
|--------------|-----------|-------------|-------------|--------------|------------------|-----------------|------------|-----------------------------|----|----|-----|
| WB01-UGR-01 | 48 | | | | | | | | | | |
| WB01-LGR-01 | 86 | | | | | | | | | | |
| WB01-LGR-02 | 113 | | | | | | | | | | |
| WB01-LGR-03 | 133 | | | | | | | | | | |
| WB01-LGR-04 | 168 | | | | | | | | | | |
| WB01-LGR-05 | 196 | | | | | | | | | | |
| WB01-LGR-06 | 220 | | | | | | | | | | |
| WB01-LGR-07 | 244 | | | | | | | | | | |
| WB01-LGR-08 | 280 | | | | | | | | | | |
| WB01-LGR09 | 300 | | | | | | | | | | |
| WB02-UGR-01 | 41 | | | | | | | | | | |
| WB02-LGR-01 | 71 | | | | | | | | | | |
| WB02-LGR-02 | 100 | | | | | | | | | | |
| WB02-LGR-03 | 135 | | | | | | | | | | |
| WB02-LGR-04 | 158 | | | | | | | | | | |
| WB02-LGR-05 | 187 | | | | | | | | | | |
| WB02-LGR-06 | 213 | | | | | | | | | | |
| WB02-LGR-07 | 248 | | | | | | | | | | |
| WB02-LGR-08 | 287 | | | | | | | | | | |
| WB02-LGR-09 | 297 | | | | | | | | | | |
| WB03-UGR-01 | 32 | | | | | | | | | | |
| WB03-LGR-01 | 63 | | | | | | | | | | |
| WB03-LGR-02 | 95 | | | | | | | | | | |
| WB03-LGR-03 | 122 | | | | | | | | | | |
| WB03-LGR-04 | 139 | | | | | | | | | | |
| WB03-LGR-05 | 180 | | | | | | | | | | |
| WB03-LGR-06 | 211 | | | | | | | | | | |
| WB03-LGR-07 | 240 | | | | | | | | | | |
| WB03-LGR-08 | 287 | | | | | | | | | | |
| WB03-LGR-09 | 297 | | | | | | | | | | |
| WB04-UGR-01 | 47 | | | | | | | | | | |
| WB04-LGR-01 | 79 | | | | | | | | | | |
| WB04-LGR-02 | 100 | | | | | | | | | | |
| WB04-LGR-03 | 130 | | | | | | | | | | |
| WB04-LGR-04 | 180 | | | | | | | | | | |
| WB04-LGR-06 | 226 | | | | | | | | | | |
| WB04-LGR-07 | 256 | | | | | | | | | | |
| WB04-LGR-08 | 292 | | | | | | | | | | |
| WB04-LGR-09 | 315 | | | | | | | | | | |
| WB04-LGR-10 | 335 | | | | | | | | | | |
| WB04-LGR-11 | 367 | | | | | | | | | | |

APPENDIX C
OXIDANT CONSUMPTION RATE EXAMPLES



New permanganate wax cylinder



Consumed permanganate wax cylinder