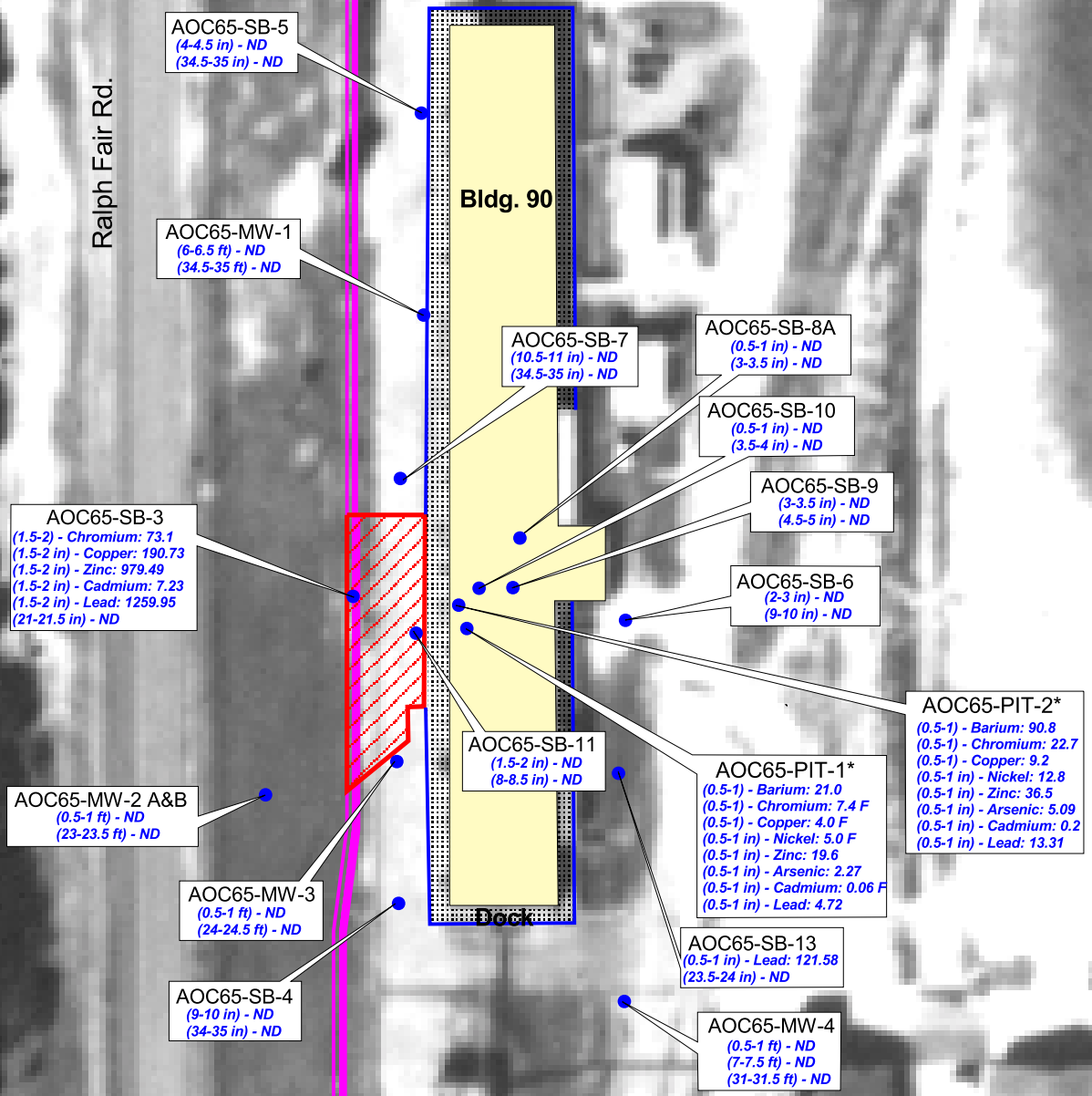


Ralph Fair Rd.

Bldg. 90

Dock



**AOC65-SB-3**  
 (1.5-2) - Chromium: 73.1  
 (1.5-2 in) - Copper: 190.73  
 (1.5-2 in) - Zinc: 979.49  
 (1.5-2 in) - Cadmium: 7.23  
 (1.5-2 in) - Lead: 1259.95  
 (21-21.5 in) - ND

**AOC65-MW-1**  
 (6-6.5 ft) - ND  
 (34.5-35 ft) - ND

**AOC65-SB-5**  
 (4-4.5 in) - ND  
 (34.5-35 in) - ND

**AOC65-SB-7**  
 (10.5-11 in) - ND  
 (34.5-35 in) - ND

**AOC65-SB-8A**  
 (0.5-1 in) - ND  
 (3-3.5 in) - ND

**AOC65-SB-10**  
 (0.5-1 in) - ND  
 (3.5-4 in) - ND

**AOC65-SB-9**  
 (3-3.5 in) - ND  
 (4.5-5 in) - ND

**AOC65-SB-6**  
 (2-3 in) - ND  
 (9-10 in) - ND

**AOC65-PIT-2\***  
 (0.5-1) - Barium: 90.8  
 (0.5-1) - Chromium: 22.7  
 (0.5-1) - Copper: 9.2  
 (0.5-1 in) - Nickel: 12.8  
 (0.5-1 in) - Zinc: 36.5  
 (0.5-1 in) - Arsenic: 5.09  
 (0.5-1 in) - Cadmium: 0.2  
 (0.5-1 in) - Lead: 13.31

**AOC65-SB-11**  
 (1.5-2 in) - ND  
 (8-8.5 in) - ND

**AOC65-PIT-1\***  
 (0.5-1) - Barium: 21.0  
 (0.5-1) - Chromium: 7.4 F  
 (0.5-1) - Copper: 4.0 F  
 (0.5-1 in) - Nickel: 5.0 F  
 (0.5-1 in) - Zinc: 19.6  
 (0.5-1 in) - Arsenic: 2.27  
 (0.5-1 in) - Cadmium: 0.06 F  
 (0.5-1 in) - Lead: 4.72

**AOC65-MW-2 A&B**  
 (0.5-1 ft) - ND  
 (23-23.5 ft) - ND

**AOC65-MW-3**  
 (0.5-1 ft) - ND  
 (24-24.5 ft) - ND

**AOC65-SB-4**  
 (9-10 in) - ND  
 (34-35 in) - ND

**AOC65-SB-13**  
 (0.5-1 in) - Lead: 121.58  
 (23.5-24 in) - ND

**AOC65-MW-4**  
 (0.5-1 ft) - ND  
 (7-7.5 ft) - ND  
 (31-31.5 ft) - ND



100 0 100 Feet

- Excavation Area
- Drainage Ditch

● Sample Locations Tested for Metals using analytical methods SW6010B (includes: Barium, Chromium, Copper, Nickel, Zinc), SW7060A (Arsenic), SW7131A (Cadmium), and SW7421A (Mercury).

(0.5-1) Lead: 1000.0  
 Depth of Sample (in parenthesis), Analyte, and Detected Concentrations Above Background Level in mg/kg

ND Not Detected Above Background Level for All Analytes

\* AOC65-PIT1 & AOC65-PIT2 were not tested for Mercury

Figure 2-5

AOC-65 Soil Boring Locations with Soil/Rock Sample Analytical Results for Metals

Camp Stanley Storage Activity